

TICA

THAILAND INCENTIVE AND
CONVENTION ASSOCIATION



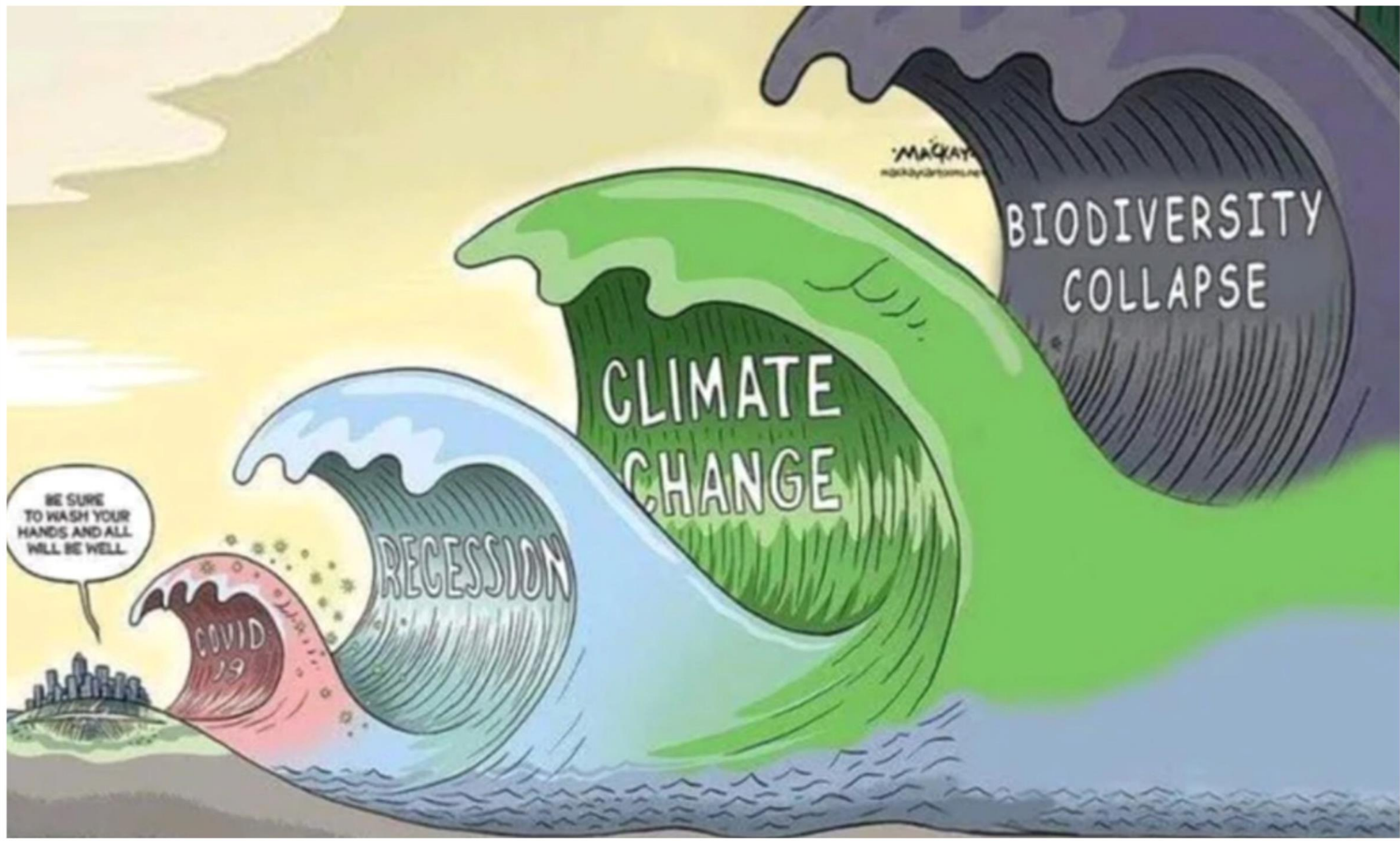
TCEB

THAILAND CONVENTION
& EXHIBITION BUREAU





UN WARNS THAT 'GLOBAL WARMING' IS OVER AND 'GLOBAL BOILING' HAS ARRIVED





Covering Business
community to include
Business for
“HUMANITY”

Product

Price

People

Place

Promotion



FROM ACADEMY AWARD® WINNING *FREE SOLO* FILMMAKERS
ELIZABETH CHAI VASARHELYI AND JIMMY CHIN

COURAGE

RUNS

DEEP

NATIONAL GEOGRAPHIC | DOCUMENTARY FILMS

THE RESCUE

NATIONAL GEOGRAPHIC DOCUMENTARY FILMS PRESENTS A VENTURELAND, STORYTELLER AND LITTLE MONSTER FILMS PRODUCTION
IN ASSOCIATION WITH PASSION PICTURES, THANET NATISRI AND SANTIPONG CHANGPUAK A FILM BY ELIZABETH CHAI VASARHELYI & JIMMY CHIN "THE RESCUE"
WRITTEN BY DANIEL PEMBERTON DIRECTED BY TRACY MCKNIGHT PRODUCED BY ROB EISENHARDT ICE COORDINATORS DAVID KATZELSON ICE TOP IAN SEABROOK PICHAI SRISANSANEE
EXECUTIVE PRODUCERS KEVIN MACDONALD ANNA BARNES THANET NATISRI SANTIPONG CHANGPUAK MICHAEL LESSLIE MARIE SAHARE ANDREW RÜHELMANN CAROLYN BERNSTEIN RYAN HARRINGTON
PRODUCED BY SANDY WALK JOHN BATTSEK ELIZABETH CHAI VASARHELYI JIMMY CHIN DIRECTED BY ELIZABETH CHAI VASARHELYI & JIMMY CHIN

LITTLE
MONSTER
FILMS

VENTURELAND

OCTOBER
TheRescue.film

STORYTELLER
PRODUCTION

GREENWICH
CREATIVES

RELEASE DATE

25/03/2022







www.thaipbs.or.th



AFECA

A S I A N

Federation of Exhibition &
Convention Associations



Source: National Snow and Data Ice Center

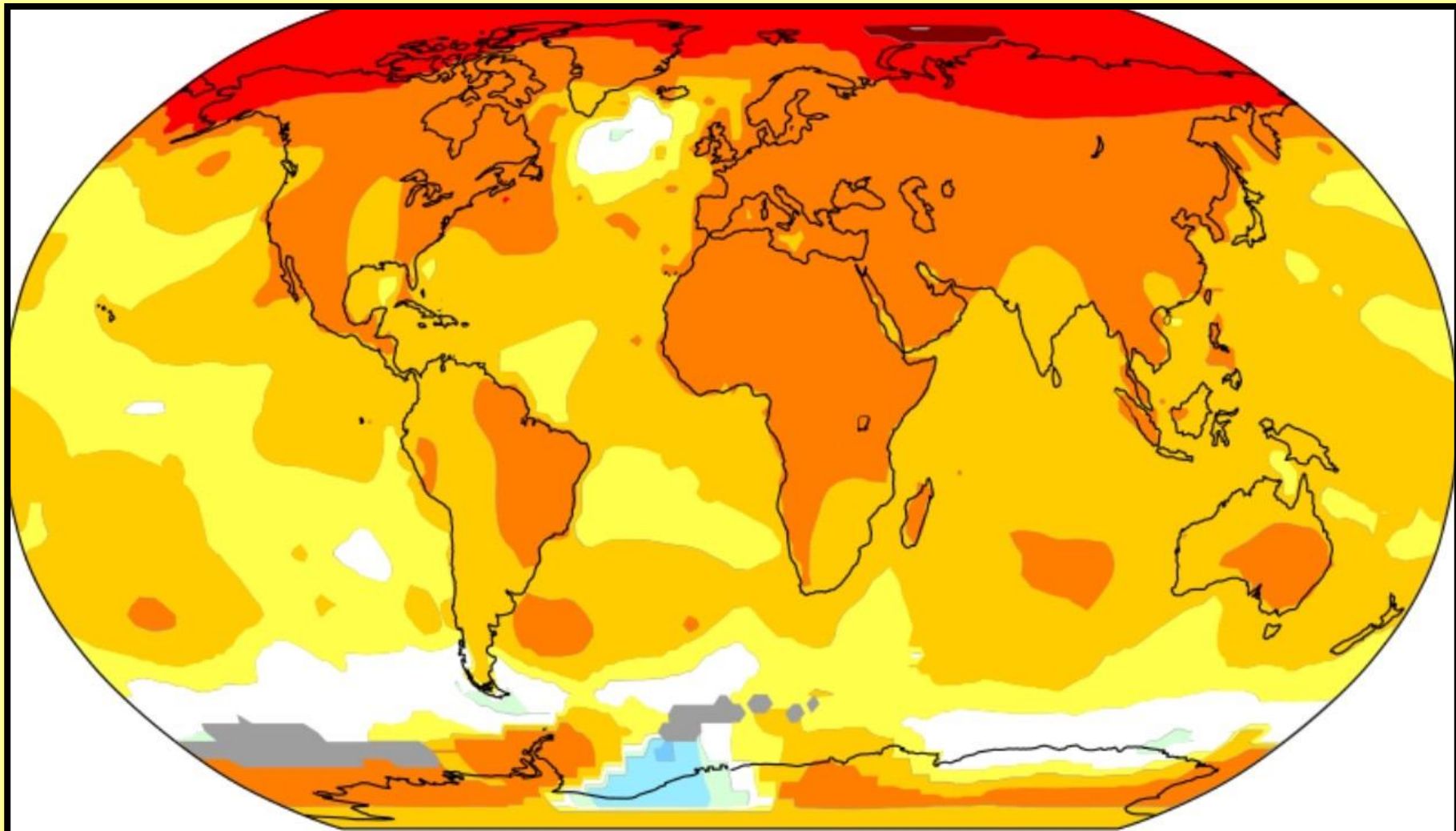
SEA ICE AROUND ANTARCTICA

MILLIONS OF SQ. KM.



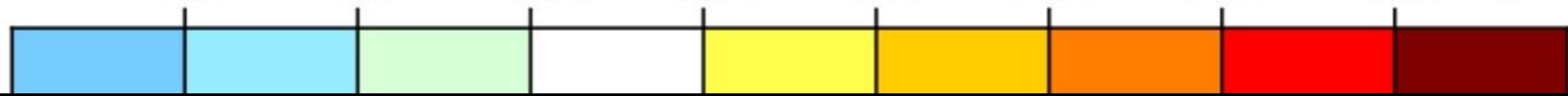
90% of global marine plastic pollution is estimated to come from just 10 rivers, 8 of them in Asia





2011–2021 average vs 1956–1976 baseline

-1.0 -0.5 -0.2 +0.2 +0.5 +1.0 +2.0 +4.0 °C



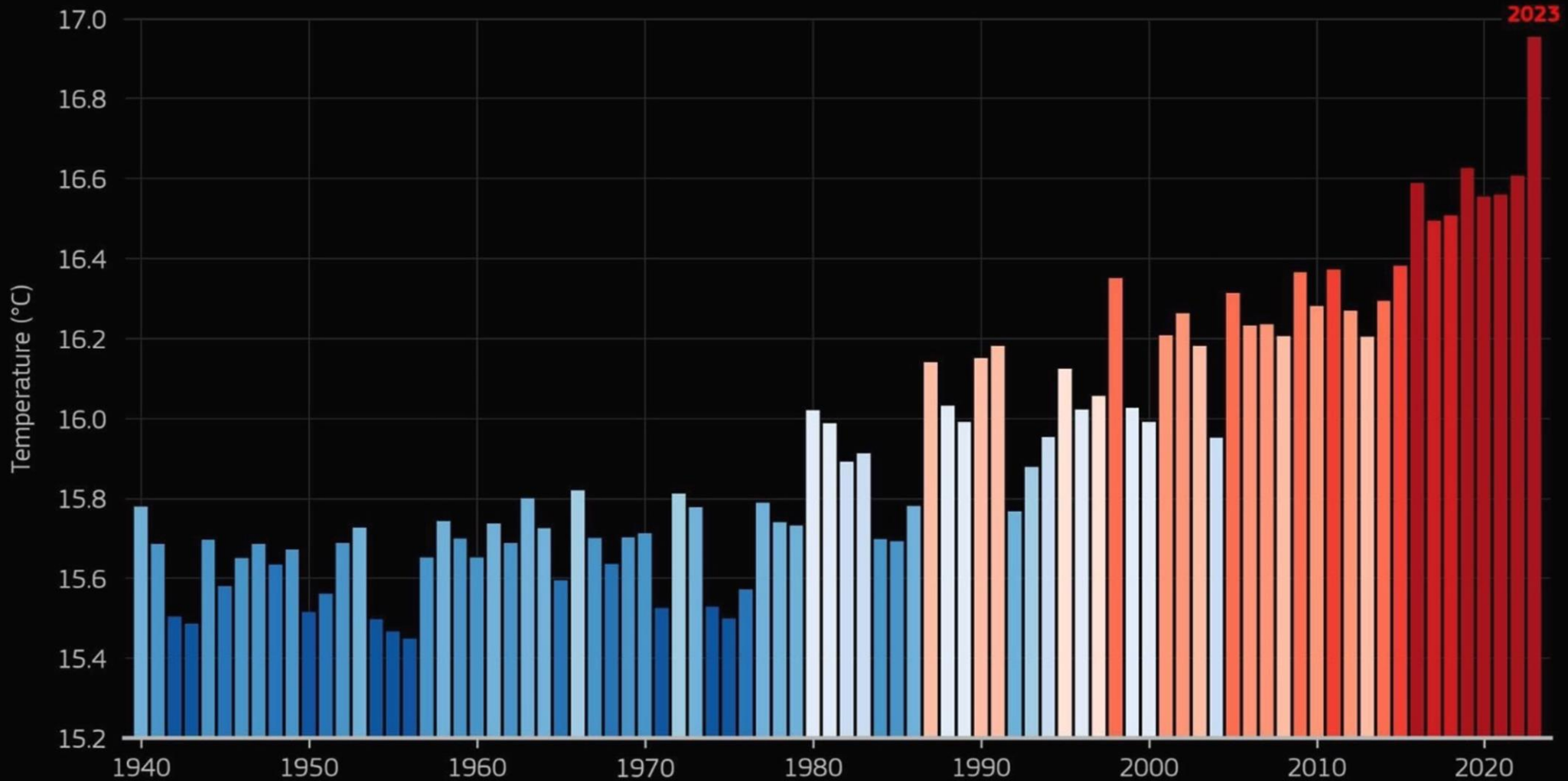
GLOBAL SURFACE AIR TEMPERATURE • JULY

Data: ERA5 1940–2023 • Credit: C3S/ECMWF



Climate Change Service

climate.copernicus.eu



PROGRAMME OF THE EUROPEAN UNION



IMPLEMENTED BY



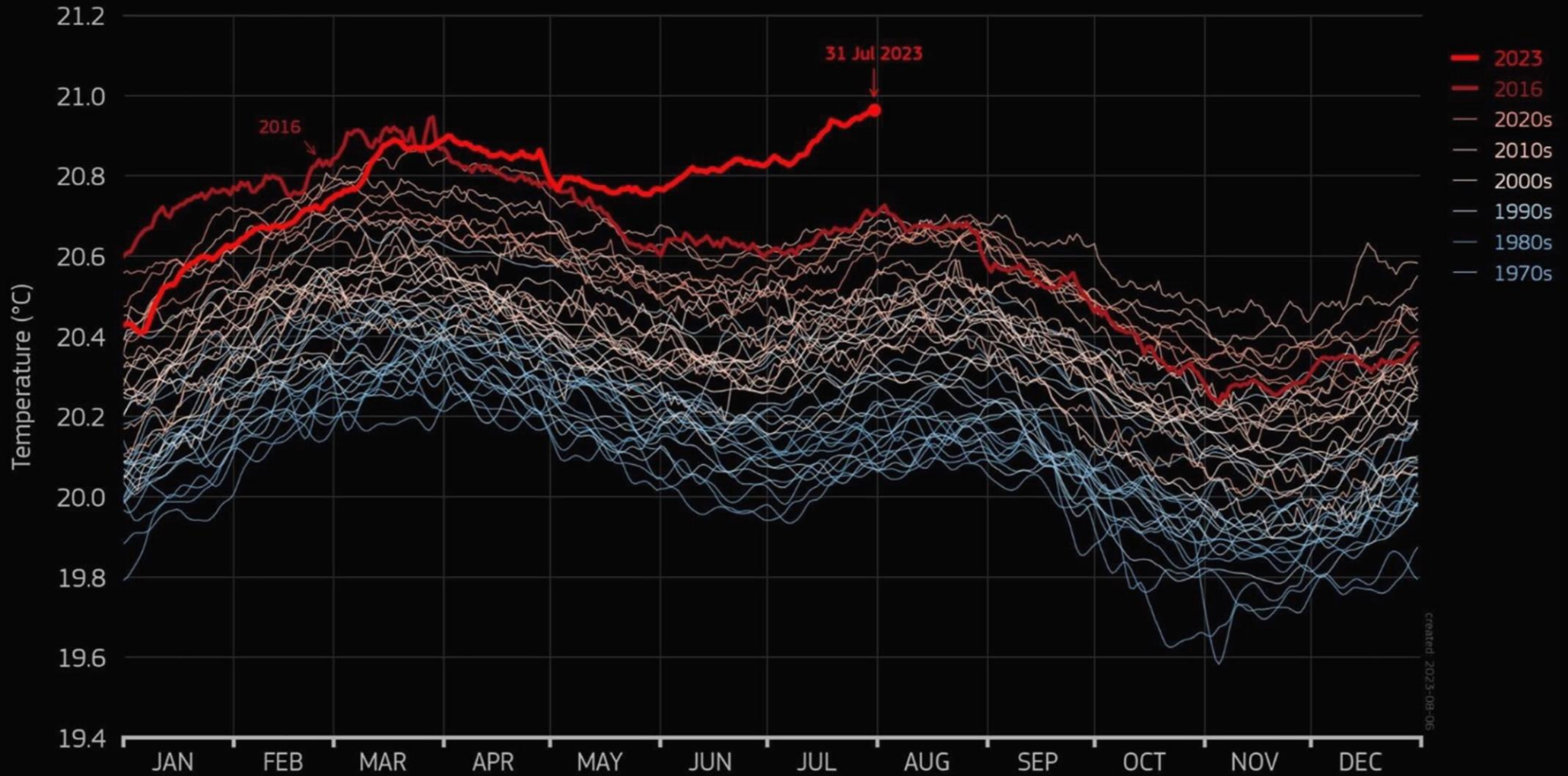
DAILY SEA SURFACE TEMPERATURE 60°S–60°N

Data: ERA5 1979–2023 • Credit: C3S/ECMWF



Climate Change Service

climate.copernicus.eu



Created: 2023-08-06



PROGRAMME OF THE EUROPEAN UNION



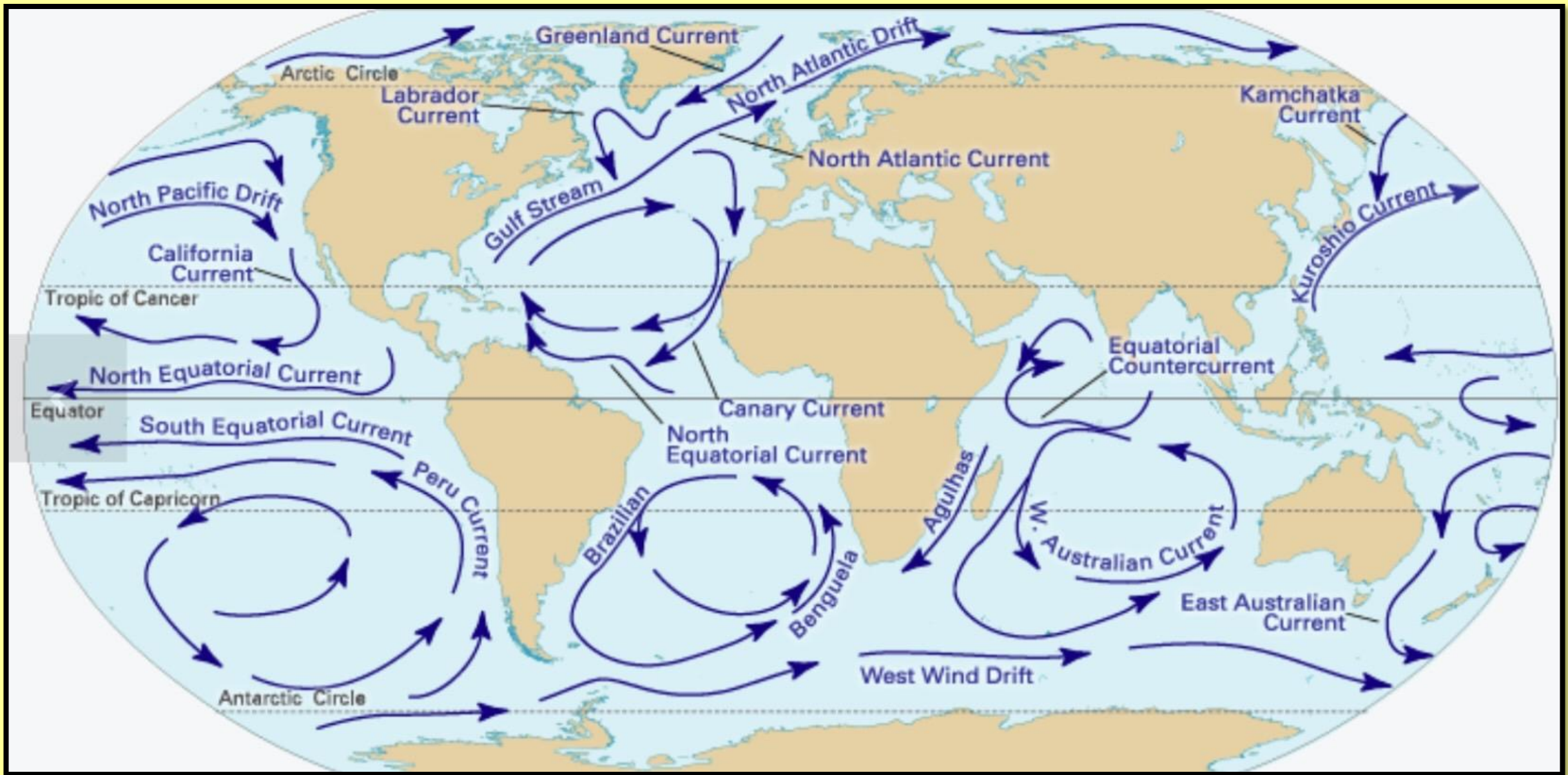
IMPLEMENTED BY





Atlantic Meridional Overturning Circulation

The diagram illustrates the Atlantic Meridional Overturning Circulation (AMOC) on a world map. A thick red line represents the northward flow of water in the Atlantic Ocean, starting from the North Atlantic and moving towards the South Atlantic. A thick blue line represents the southward flow of water, starting from the South Atlantic and moving back towards the North Atlantic. The two lines form a continuous loop, with the red line curving back to the left and the blue line curving back to the right. The map shows the continents of North America, South America, Africa, Europe, Asia, and Australia, with the Atlantic Ocean in the center. The text 'Atlantic Meridional Overturning Circulation' is written in a green box across the middle of the map.



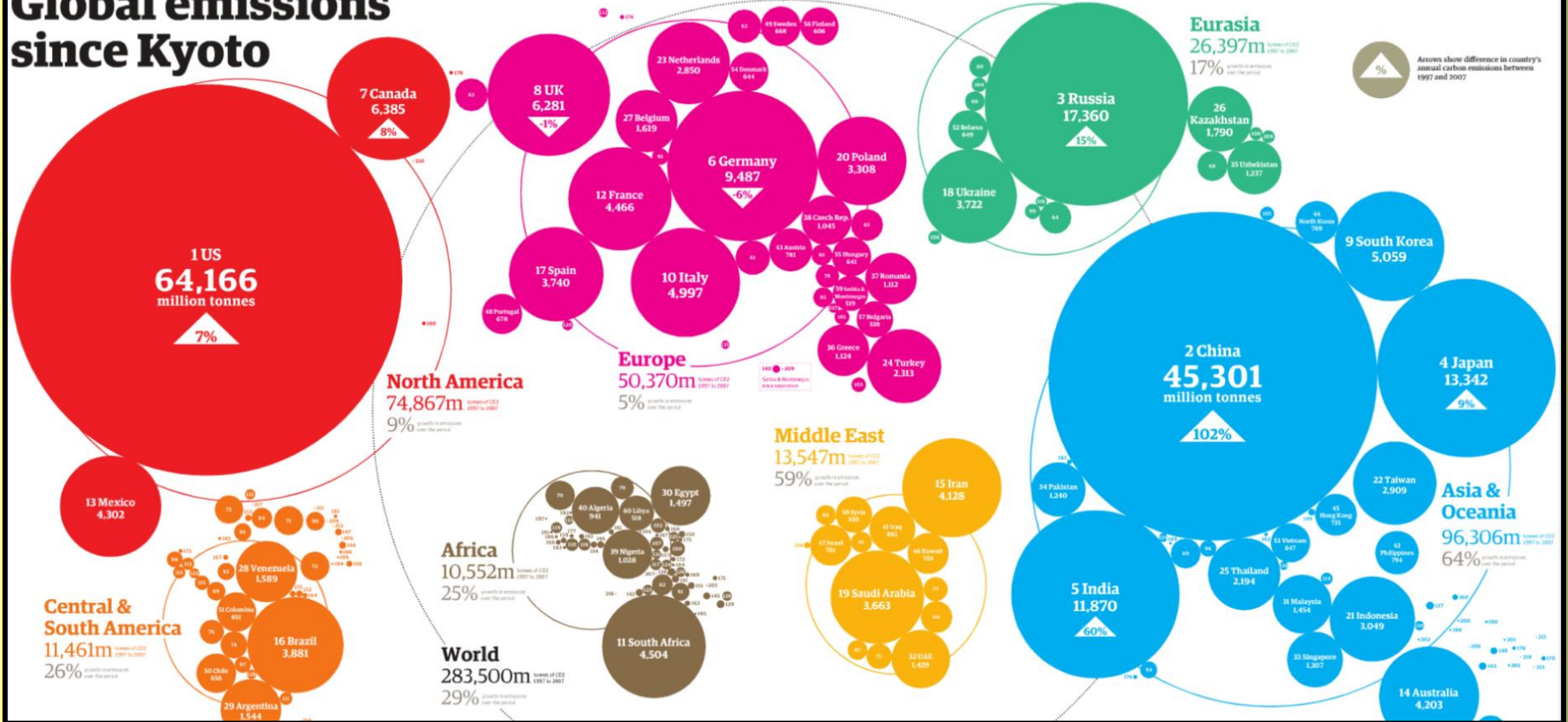




THE TIPPING POINT

A graphic of a seesaw with the text "THE TIPPING POINT" written on it, tilted upwards. The seesaw is a dark blue line with a triangular fulcrum in the center. The text is in a bold, dark blue, sans-serif font, following the curve of the seesaw. The background is a light gray gradient.

Global emissions since Kyoto





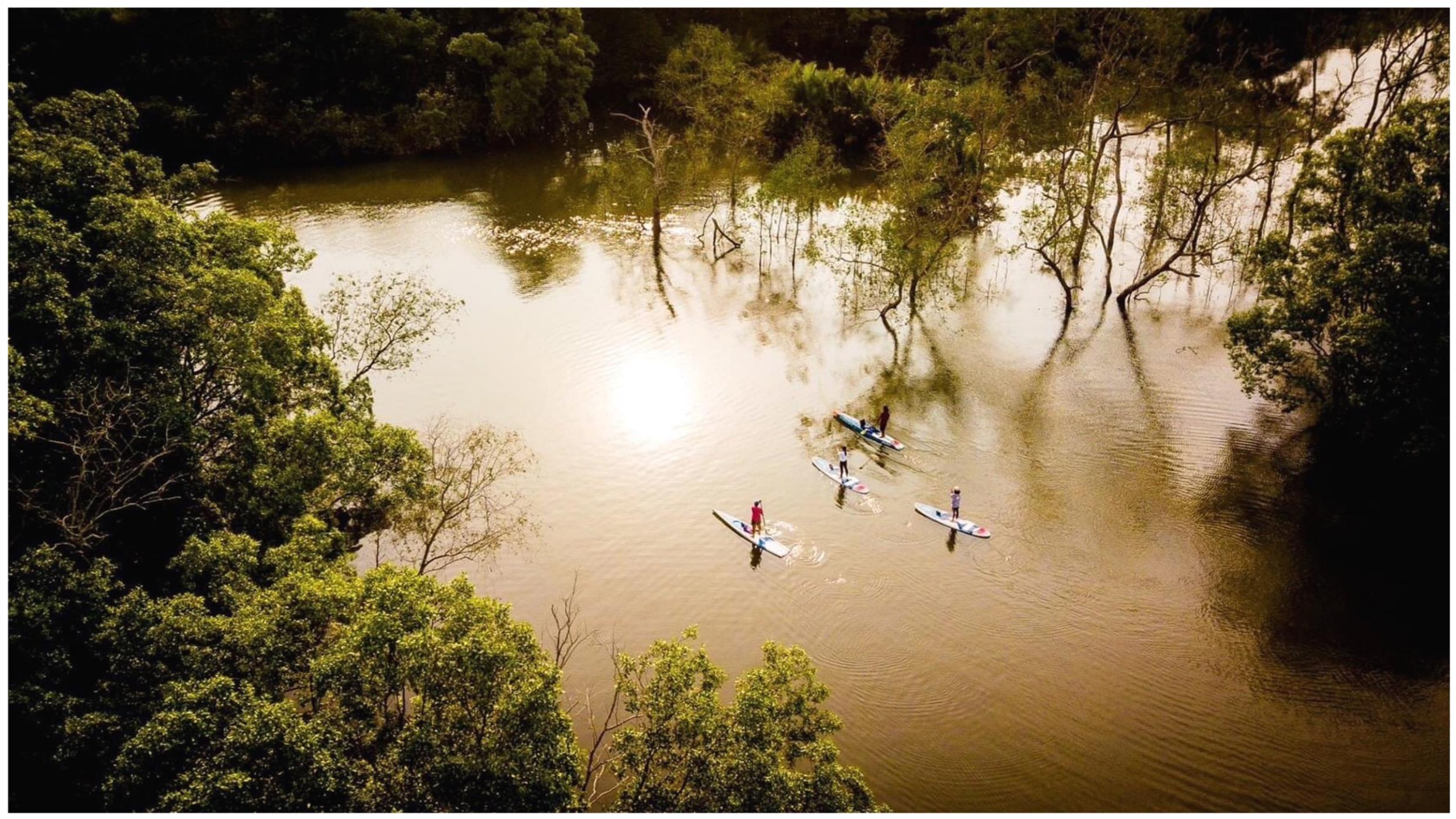
Extended Producer Responsibility EPR



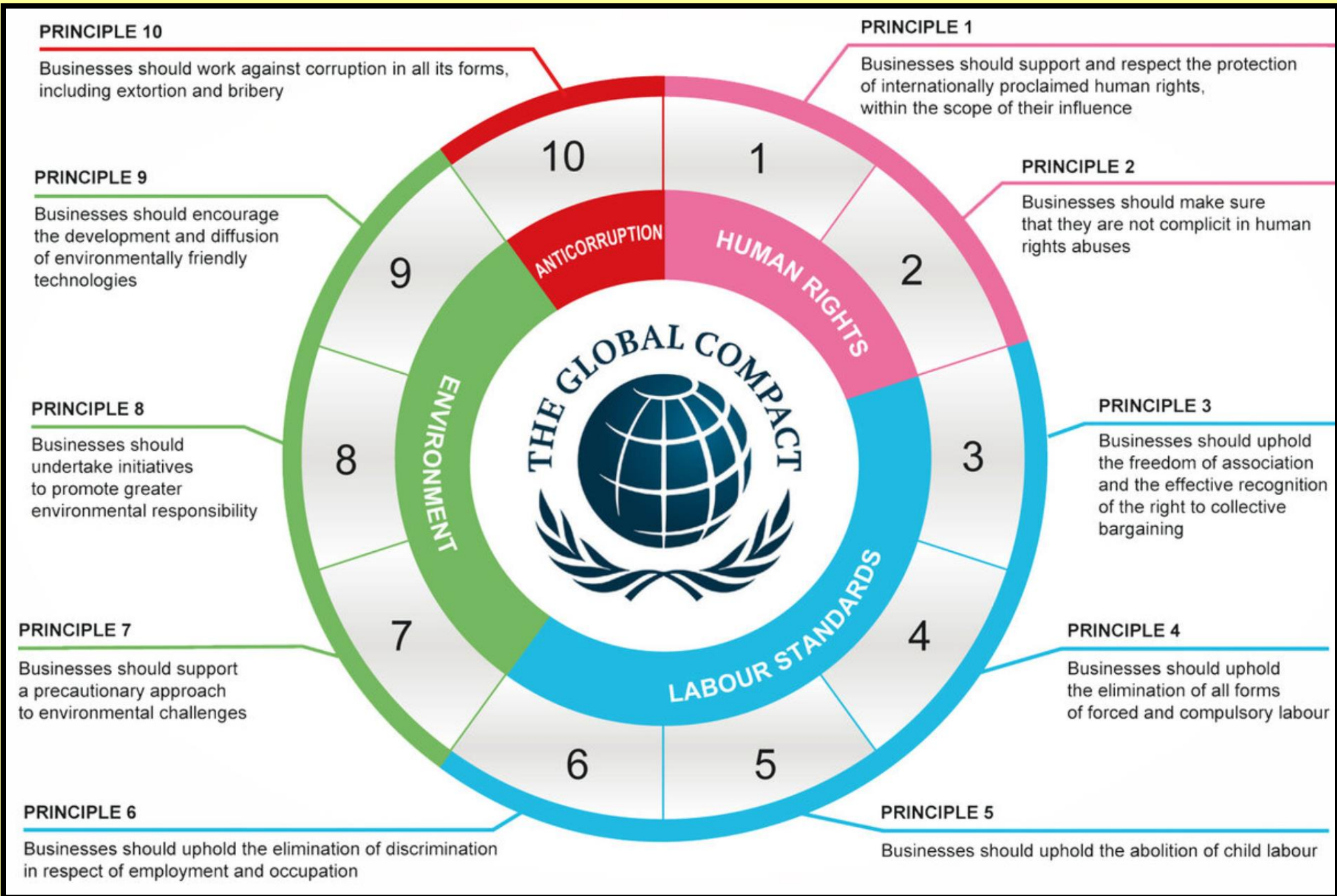












WILDLAND INDIAN MACAO TRAVEL JAPAN
SOCIETIES ROAD AGRICULTURE
HINA MONGOLIA CAMBODIA PROVINCE
INDONESIA CONSTRUCTION JOB FOOD HONG KONG
TOKYO FINANCIAL
OUTH KOREA AID GOVERNMENTS SCIENCE CUISINE POPULATION
MAGANESI UZBEKISTAN CONTINENT ASIA PROVINCES KUALA LUMPUR EAST TIMOR LAW NORTH KO
HOUSING MANILA SRI LA
NIGHT PAKISTAN CAMBODIAN
PHILIPPINES HOUSE MALAYSIA CONTROL GAIN VIETNAM
ALDIVES RELIGION CULTURE BHUTAN SEASONAL RELIGIONS HARMONY LAOS SCHOOL IND
TAIWAN DEPARTMENT NEPAL BUSINESS TAIWAN PARTNER
CREATIVITY ECONOMIES EMPLOYMENT
BUILDINGS

















THE SUFFICIENCY ECONOMY PHILOSOPHY

















ก่อนเข้าฟื้นฟูเมื่อปี พ.ศ.๒๕๕๑



ภาพปัจจุบัน





"THIS YEAR'S MOST
**THRILLING—
AND HUMAN—
DOCUMENTARY"**

BRADY LANGMANN *Esquire*

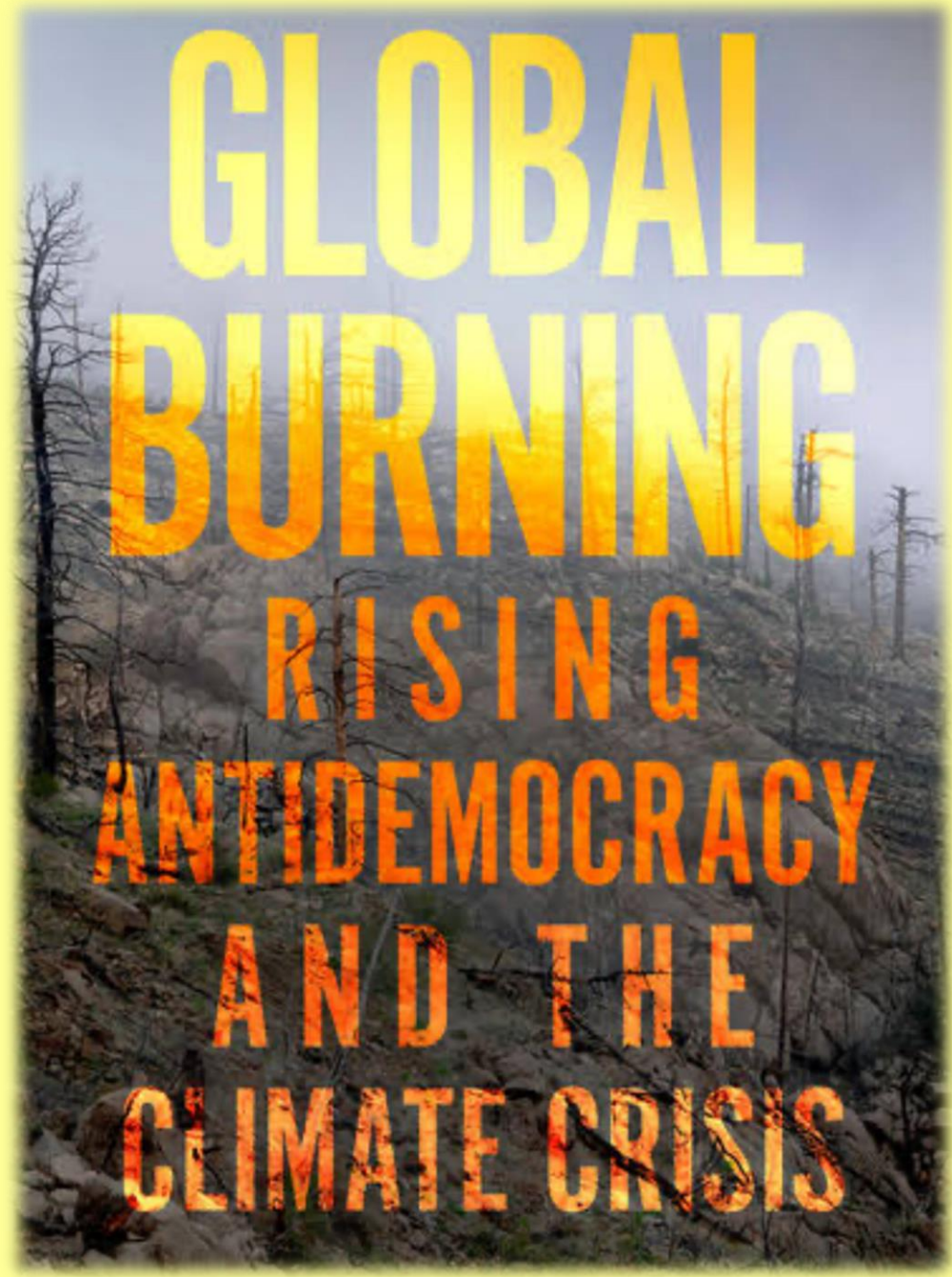


NATIONAL GEOGRAPHIC | DOCUMENTARY FILMS

THE RESCUE

IN THEATERS EVERYWHERE **FRIDAY, OCTOBER 15**





**GLOBAL
BURNING
RISING
ANTIDEMOCRACY
AND THE
CLIMATE CRISIS**



AGENDA
2030





