

The **11th** *Thailand*
TOURISM AWARDS 2017
รางวัลอุตสาหกรรมท่องเที่ยวไทย





Kinnari

Symbol of Thailand Tourism Awards

"Kinnari" is a well-known mythological animal in Thai literature representing the beauty and purity. This character holds a lotus which signifies cleanliness or high value in one hand and, in the other hand, a pigeon which signifies the peace and fraternity considered as the prevailing trend of tourism industry towards the society and environment.

This sculpture was designed by
Prof. Nontiwat CHANTANAPALIN



Message from the UNWTO Secretary-General

On behalf of the World Tourism Organisation (UNWTO), the United Nations (UN) specialized Agency for travel and tourism, it is my pleasure to greet all participants of the 11th Thailand Tourism Awards on September 27, World Tourism Day 2017.

The Thailand Tourism Awards, which highlight good practices in sustainable tourism management, environmental protection and community participation, are illustrative of Thailand's steadfast commitment and leadership in furthering sustainable and inclusive tourism.

The 2017 Awards correspond to this World Tourism Day's theme, "Sustainable Tourism-a Tool for Development". The Awards' new conceptual frameworks for judging its winners chime in great aspect with the different sustainable development dimensions reflected in today's celebrations, as well as those of the International Year of Sustainable Tourism for Development 2017.

Namely, these are : environmental protection; cultural values, diversity and heritage awareness ; inclusive and sustainable social and economic growth; and fair and responsible tourism management.

Both frameworks are grounded in the Sustainable Development Goals (SDGs) agreed upon by world leaders to advance our common action to 2030 and beyond.

The UN General Assembly's declaration of 2017 as the International Year of Sustainable Tourism for Development is a clear recognition of tourism's contribution to this universal development agenda, and it's potential to lead in the three dimensions of sustainability : social, economic and environmental.

This World Tourism Day we are highlighting the fact that, whilst tourism is included in three of the 17 SDGs-Goal 8 on decent work and economic growth, Goal 12 on responsible consumption and production, and Goal 14 on life below water-its cross-cutting nature and reach into other sectors means that it can contribute to all 17 Goals ; from gender equality to poverty alleviation, from fighting climate change to building partnerships for development.

Long after the International Year 2017, the gains we are making as a global tourism community must prevail in the sector's development in the coming years and help to continue positioning tourism in the 2030 Agenda for Sustainable Development.

World Tourism Day 2017 is a call for the commitment and cooperation of all parties-governments, civil society and private sector-to capitalize on this historic year, overcome challenges and build a more responsible sector in the years to come.

I extend my gratitude to the Tourism Authority of Thailand for joining us in celebrating World Tourism Day and the International Year 2017, and to all Award participants for helping to advance sustainable tourism in Thailand with such commitment and vision.

I wish you all continued success and a happy World Tourism Day 2017.

Taleb Rifai

Secretary-General, World Tourism Organization (UNWTO)



Message from the Minister of Tourism and Sports

The tourism industry has an important role for driving and developing the economy of the nation. Thus, the Royal Thai Government through the Ministry of Tourism and Sports has a policy that emphasises on the integration with all sectors to promote tourism to progress and have sustainability in accordance with the Thailand 4.0 strategy. This has been conducted by maintaining the identity, value of the local wisdom, and tourist attractions, which include nature, culture, and historical sites as well as creating incentives and facilities that assist in providing a touristic atmosphere. This strategy will create differences over our competitors and leadership in modern marketing to be utilised in initiating links and reaching target groups of high-value travellers. This will further create enhanced opportunities and acceptance in the quality of the tourism products and services in the various tourist markets.

Therefore, the development of human resources in the field of hospitality management and quality of products and services must be qualified if the tourism industry wants to have a role in driving the economy. For that reason, the Thailand Tourism Awards are one of the solutions to enhance the tourism industry and have been organised by the Tourism Authority of Thailand (TAT) over 20 years. This direction clearly publicises the tourism image of the nation through the organisation of numerous marketing activities in the country and internationally. The accomplishments of these Thailand Tourism Awards indicate the intention of all the related sectors, which have also been merged to the action plan of the Ministry of Tourism and Sports that is the standard of service and tourism development in various dimensions of efficiency. The Ministry assures that the Thai tourism industry will continue to have international standards.

On behalf of the Ministry of Tourism and Sports, I would like to offer my congratulations for the success of the Thailand Tourism Awards and all the recipients who have received an award at the 11th Thailand Tourism Awards 2017. The recipients must be honoured that they are already involved in developing the Thai tourism industry for continuous sustainability.

H.E. Mrs. KOBKARN WATTANAVRANGKUL
Minister of Tourism and Sports

Message from the Governor of the Tourism Authority of Thailand

The tourism industry has an important role to develop the country's stability that includes the economy, society, and international trade. This industry is also a tool for the integration with all sectors in both the initiatives and management for driving the tourism of the nation to be promoted domestically and internationally. Today, tourism management is a key for disseminating income to the provinces, as well as acts as a guide on modern marketing management to encourage investors to invest and influence tourism entrepreneurs to always continue to develop quality products and services for the benefit of consumers and tourists. This is the direction to increase the value of tourism products and services to be competitive in the international stage under the Thailand 4.0 strategy of the Royal Thai Government.

Throughout the years, the key income earner for the country has been the natural assets and the retained strengths of the customs and traditions are the identity of Thainess. Furthermore, the service culture has always received acceptance and satisfaction from tourists. Therefore, the key goal in the selection of high quality products and services for the market is the contextual adjustment of tourism to be line with Sustainable Development Goals (SDGs). These take into account the social and environmental dimensions as a major mechanism, which is in line with the direction of the tourism promotions of the nation that pushes quality tourism products forward to the world.

The Tourism Authority of Thailand (TAT) has focused on various activities to support the nation's tourism, both locally and internationally, for nearly 60 years. This has presented a positive image of the country, as well as created a strong direction for the Thai tourism industry. As such, the Thailand Tourism Awards (TTA) are a measurement to enhance the tourism products, current tourism situation and promote the initiative to develop and generate high quality creative products in different dimensions under the framework of sustainability of the economy, society and the environment. TAT held the 1st Thailand Tourism Awards in 1994, which have since been conducted every two years for the past two decades until today. This year will see the presentation of the 11th Thailand Tourism Awards on 27 September, 2017, on World Tourism Day. Therefore, these awards have a role to support the government sector, organisations and entrepreneurs in the tourism industry who are able to develop their products to be of an international standard and receive a Kinnari Award, which is a symbol of honour to guarantee the quality of the tourism products and services as well as reassure Thai and foreign tourists of the recognition.

On behalf of TAT, I would like to offer my congratulations to all recipients of the 11th Thailand Tourism Awards in all categories in which your achievements will be an example in the best practices of success for a sustainable future.



Mr. YUTHASAK SUPASORN
Governor of the Tourism Authority of Thailand





Background of the Thailand Tourism Awards 2017

The tourism industry is an industry that plays a vital role in the world economy and serves as a main product in the international trade system. As for Thailand's tourism industry, over time, it has been a driving force that has had an obvious role as the main product that has stimulated economic expansion by means of increasing employment and careers to cater to tourism travel flows, both domestic and overseas, as well as generated income distribution widely to communities. However, the changing competition, tourists' behaviour, and marketing demands have caused a tourism trend that is focused on the importance of conducting environmentally-friendly activities with good management, promoting sustainable tourism with the balance in the tourism industry, and creating the participation process of all sectors in society in terms of conceptual ideas and management, which has become the factors vital to the development of Thai tourism products and services to have a competitive edge and be in accordance with the changing context of tourism at the national and global levels.

The Tourism Authority of Thailand (TAT), as the agency in charge of the publicity and promotion of the country's tourism image for more than 55 years, has realised and attached importance to the designation of directions and clearness in the process of all fields in the tourism industry toward a sustainable path. TAT has also promoted and increased an opportunity of investment for operators of tourism products and services in support of positive images of culture and traditions, as well as has stimulated quality tourism management to present the products' strengths and differences over the competitors'. Therefore, the Thailand Tourism Awards was introduced for the first time in 1996. Since then, the event has been organised in alternate years. This year's event marks the 11th Awards presentation.

The award-winning works are well-selected products and services from every aspect including the environment, management, marketing, technology and innovation, human resource quality, etc., which are ready to cater to tourism as a complete cycle. Furthermore, it is the creation of the value-added to the tourism products and services, which is in line with the vision of the ASEAN Tourism Strategy Plan 2016-2025. Thus, the "Kinnari" Awards presented to all of the works signify a mark of tourism accreditation for quality products and services that can create tourists' confidence and trust, and are ready to deliver experiences and positive images of Thai tourism at the world level.

In addition, the United Nations World Tourism Organisation has conveyed their congratulations and appreciation for the Thai tourism operation and has attached importance to the Thailand Tourism Awards as a project to help develop tourism in a way that contributes to humanity and the world with concrete success. Hence, the Thailand Tourism Awards presentation ceremony on Wednesday, 27 September 2017, is honoured as an activity to enhance the “World Tourism Day”

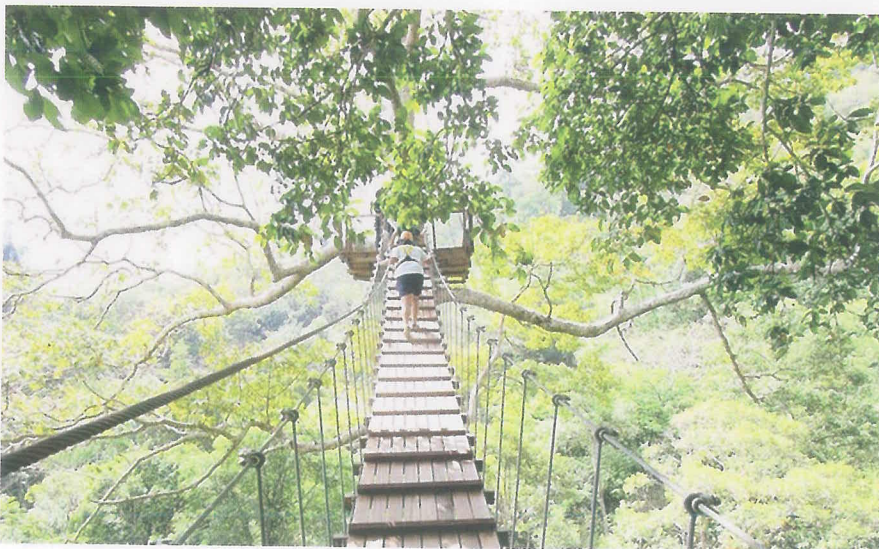
Objectives

1. To benefit the marketing promotion and public relations for entrepreneurs in the tourism industry who provide quality management with standards, social responsibility as well as create value-addedness to tourism products.
2. To express the clear will of the Tourism Authority of Thailand (TAT) to do the marketing promotion for the Thai tourism industry, and gain international recognition of these quality symbolic Awards.
3. To expand the marketing base for operators, agencies, or organisations concerned to obtain support and enhancement continuously.
4. To praise the award-winning works for sustainable development.

Categories of Awards

The 11th Thailand Tourism Awards 2017
will be divided into five categories :

1. Tourism Support and Promotion Organisations
2. Tour Programmes
3. Tourist Accommodations
4. Tourist Attractions
5. Health Tourism



The categories of Awards are divided by region as shown in the table below :

No	Main Category	Subcategory	Contest Area	Amount
1.	Tourism Support and Promotion Organisations	1.1 Public Organisation	5 regions	15 Awards
		1.2 Private Organisation	5 regions	15 Awards
		Total		30 Awards
2.	Tour Programmes	2.1 Domestic Tour Programmes	5 Areas	15 Awards
		2.2 Inbound Tour Programmes	5 Areas	15 Awards
		Total		30 Awards
3.	Tourist Accommodations	3.1 City Hotel		
		3.1.1 Less than 80 rooms	7 regions, Bangkok	24 Awards
		3.1.2 80 rooms and over	7 regions, Bangkok	24 Awards
		3.2 Resort Hotel		
		3.2.1 Less than 80 rooms	7 regions, Bangkok.	24 Awards
		3.2.2 80 rooms and over	7 regions, Bangkok	24 Awards
		3.3 Boutique Hotel	7 regions, Bangkok	24 Awards
		3.4 Pool Villa Hotel	Nationwide	3 Awards
		3.5 Convention Hotel	Nationwide	9 Awards
		Total		132 Awards
4.	Tourist Attractions	4.1 Natural Attractions	5 regions	15 Awards
		4.2 Historical and Cultural Attractions	Nationwide	3 Awards
		4.3 Agrotourism Attractions	5 regions	15 Awards
		4.4 Recreational Attractions		
		4.4.1 For Learning	5 regions	15 Awards
		4.4.2 For Entertainment	Nationwide	3 Awards
		4.4.3 For Adventure	Nationwide	3 Awards
		4.5 Community-based Tourism Attractions	5 regions	15 Awards
		Total		69 Awards
5.	Health Tourism	5.1 Health & Wellness Destination	Nationwide	6 Awards
		5.2 Hotel/Resort Spa	5 regions	15 Awards
		5.3 Day Spa	5 regions	15 Awards
		5.4 Thai Wisdom Spa	5 regions	15 Awards
		Total		51 Awards
Total				312 Awards

The Committees of the 11th Thailand Tourism Awards 2017

Organising Committee

1. Governor of the Tourism Authority of Thailand	Chairperson
2. Deputy Governor for International Marketing (Europe, Africa, Middle East and the Americas)	Member
3. Deputy Governor for Marketing Communications	Member
4. Deputy Governor for Administration	Member
5. Deputy Governor for Policy and Planning	Member
6. Deputy Governor for Tourism Products and Business	Member
7. Deputy Governor for Domestic Marketing	Member
8. Advisor 10	Member
9. Deputy Governor for International Marketing (Asia and South Pacific)	Member
10. Executive Director of Central Region	Member
11. Executive Director of Northeastern Region	Member
12. Executive Director of Southern Region	Member
13. Advisor 9	Member
14. Executive Director of Advertising and Public Relations Department	Member
15. Executive Director of Events Department	Member
16. Executive Director of Northern Region	Member
17. Executive Director of Information Technology Office	Member
18. Executive Director of Eastern Region	Secretary
19. Executive Director of Product Promotion Department	Asst. Secretary
20. Director of Tourism Training Network Division	Asst. Secretary
21. Deputy Executive Director of Product Promotion Department	Asst. Secretary
22. Chief of Curriculum Development Section	Asst. Secretary

Judging Panels

1. Awards for Tourism Support and Promotion Organisations	
1.1 Mr. Vishnu Aimpraneetra	Chairperson
1.2 Representative of the Department of Local Administration	Member
1.3 Representative of the Department of Environmental Quality Promotion	Member
1.4 Representative of Arun In Siam	Member
1.5 Representative of the Fine Arts Department	Member
1.6 Mr. Art Seeha-umpai	Member
1.7 Asst. Prof. Yongtanit Pimonsathean	Member
1.8 Mr. Maitree Buddhawong	Member
1.9 Asst. Prof. Mr. Jittasak Putjorn	Member
1.10 Dr. Ake Pattaratanakun	Member
1.11 Dr. Tawkiat Noisomlee	Member
1.12 Executive Director of the Southern Region	Member
1.13 Director of the Tourism Training Network Division	Secretary

2. Awards for Tour Programmes

2.1 Mr. Suparerk Soorangura	Chairperson
2.2 Representative of the Department of Tourism	Member
2.3 Representative of the Thailand Tourism Council	Member
2.4 Representative of the Professional Tourist Guides Association of Thailand	Member
2.5 Representative of the Association of Thai Travel Agents	Member
2.6 Representative of the Association of Domestic Travel	Member
2.7 Representative of the Thai Ecotourism and Adventure Travel Association	Member
2.8 Asst. Prof. Supakawadee Apinantara	Member
2.9 Mr. Wirote Sitaprasertnand	Member
2.10 Miss Maiyarat Pheerayakoses	Member
2.11 Mrs. Suchavadee Srisuwannakan	Member
2.12 Representative of Thai Federation of Provincial Tourist Association	Member
2.13 Executive Director of the Northeastern Region	Member
2.14 Chief of Organisational Investment Planning Section	Secretary

3. Awards for Tourist Accommodations

3.1 Asst. Prof. Chirapol Sintunawa	Chairperson
3.2 Representative of the Pollution Control Department	Member
3.3 Assoc. Prof. Chuvit SuchaXaya	Member
3.4 Mr. Prakit Chinamornphong	Member
3.5 Mr. Comgrit Sorchom	Member
3.6 Mr. Narin Ruengwongsa	Member
3.7 Mr. Weranit Thansuporn	Member
3.8 Miss Veeraya Sansanakiet	Member
3.9 Representative of the Thai Hotels Association	Member
3.10 Representative of the Association of Thai Travel Agents	Member
3.11 Representative of the Department of National Parks, Wildlife and Plant Conservation	Member
3.12 Representative of Department Of Provincial Administration, Ministry of Interior	Member
3.13 Representative of Institute for Small and Medium Enterprises Development	Member
3.14 Director of Office of Information Technology	Member
3.15 Chief of the Souvenirs Section	Secretary

4. Awards for Tourist Attractions

4.1 Mr. Chaisong Churit	Chairperson
4.2 Representative of the Office of Natural Resources and Environmental Policy and Planning	Member
4.3 Representative of the Department of National Parks, Wildlife and Plant Conservation	Member
4.4 Representative of the Fine Arts Department	Member
4.5 Representative of the Department of Agricultural Extension	Member
4.6 Representative of the Thailand Community Based Tourism Institute	Member
4.7 Representative of the Department of Environmental Quality Promotion	Member
4.8 Representative of the Thai Ecotourism and Adventure Travel Association	Member
4.9 Representative of the Association of Domestic Travel	Member
4.10 Representative of the Association of Siamese Architects under the Royal Patronage of His Majesty the King	Member
4.11 Wiwatchai Boonyapak	Member
4.12 Anucha Leksakuldilok	Member
4.13 Representative of Designated Areas for Sustainable Tourism Administration (Public Organisation)	Member
4.14 Executive Director of Monitoring and Risk Management Department	Member
4.15 Asst. Prof. Dr. Jinda Klipthong	Member
4.16 Director of Attractions Promotion Division	Secretary

5. Awards for Health Tourism

5.1 Mr. Supat Wangwongwatana	Chairman
5.2 Representative of the Department of Health Service Support Member	
5.3 Representative of the Pollution Control Department	Member
5.4 Representative of the Department of Environmental Quality Promotion	Member
5.5 Representative of the Federation of Thai Spa	Member
5.6 Representative of the Thai Spa Association	Member
5.7 Representative of the Thai Hotels Association	Member
5.8 Mr. Apichai Jearadisak	Member
5.9 Executive Director of Europe, Africa and Middle East Region	Member
5.10 Chief of Facilities Section	Secretary

Conceptual Frameworks for Judging the Awards

The concept on the conservation and management of environmentally-friendly tourism products has always been realised and given importance to by the Tourism Authority of Thailand (TAT). Under the current competition of the tourism industry, a desire to preserve resources or tourism products, a response to the trend toward tourists' consumption, community participation in terms of economic and social aspects, and sustainable tourism promotion, TAT, therefore, has introduced the concept to the conceptual frameworks for judging the 11th Thailand Tourism Awards, which consist of :

Conceptual Framework I : Sustainable Management in 4 dimensions :

1. Management that is friendly to the environment/natural resources.
2. Management that is aware of traditions, culture, and ways of life.

3. Management that involves community participation and fair income distribution to communities.
4. Management that is with responsibility to society and communities or Corporate Social Responsibility (CSR).

Conceptual Framework II : Sufficiency Economy is applied.

Conceptual Framework III : Creation of value and value addedness to tourism products and services (value creation), and creative tourism.

Conceptual Framework IV : Readiness for the promotion of tourism marketing, and modern marketing is applied to the sales promotion.

Concept of Sustainable Tourism Development

The United Nations Foundation and the United Nations World Tourism Organization (UNWTO) have fundamental concepts on sustainable tourism as follows :-

1. Management with efficiency.
2. Maximisation of the social and economic benefits to local communities and creation of the least negative impacts.
3. Maximisation of the benefits to cultural heritage and creation of the least negative impacts.
4. Maximisation of the benefits to the environment and creation of the least negative impacts.

Concept of Sufficiency Economy

The concept on sufficiency economy refers to development that is based on moderate means and without carelessness, but in regard of adequacy, rationale, self-protection immunity, as well as the using of knowledge, thoughtfulness and morals in the planning, decision-making and executing. Moreover, this is a philosophy that guide the way of existence and self-practice in a direction that things should be, with the basis of the traditional ways of life of Thai society. It can be adapted at all times and gives a systematic way of seeing the world that always keeps changing. Also, it focuses on survival from disasters and crises for security and sustainability of the development. Sufficiency comprises the following three qualities :-

1. Being enough means being not more or less than necessary, without taking advantage of themselves and others; such as, the production and consumption at the moderate level.
2. Rationale refers to decision making on the level of being enough that is made reasonably, by taking into consideration relevant causes and effects that are expected from any actions thoroughly.
3. Self-protection immunity signifies the preparedness for impacts and changes in any ways that will occur in regard of the possibility of any situations that are expected to happen in the future.

Concept of Modern Marketing

It is a strategy to present facts and value, as well as personality of a brand, through marketing tools in order to communicate to target groups. These tools must speak with one voice, and go in the same direction, in order to support and reiterate the brand. The tools for implementation are varied; such as,

1. Product Development
2. Public Relations
3. Advertising
4. Event Marketing
5. Sales Promotion
6. Sponsorship and Event Marketing
7. Information and Communications Technology Marketing

Concept of Creative Tourism

The United Nations Educational, Scientific and Cultural Organisation (UNESCO) has defined creative tourism as tourism that has the purpose in accordance with the relevant of community development in order to create sustainability in the pursuit of life of the community. In this regard, tourism activities are organised in harmony with and in relation to his tory, culture and ways of life in the community in terms of learning and experimenting, to obtaining experiences from things that really exist and are in the community. Furthermore, other activities are held, focusing on learning and a study from experiences involving with the community, as well as participation and interaction between tourists and people in the community, with the aim that tourists are not only tourists; they will be given and opportunity to live as a citizen of the community.

Concept of Value Creation

The Office of the National Economic and Social Advisory Council has defined value creation as the using of an advantage or an intrinsic strong point to create and produce goods and services to appropriately respond to the needs of consumers. As a result, goods and services are created with value, and their prices can be as high as desired.

Categories of Awards The 11th Thailand Tourism Awards 2017

will be divided into five categories :

1. Tourism Support and Promotion Organisations
2. Tour Programmes
3. Tourist Accommodations
4. Tourist Attractions
5. Health Tourism

◆ Awards for Tourism Support and Promotion Organisations

They are divided into 2 sub-categories :

1. Public Organisation
2. Private Organisation

Definition

Tourism support and promotion organisations mean the organisations in the public or private sector that have concrete results of tourism support and promotion at the national, regional and local levels.

- The public sector ; for example, official agencies, state enterprises, local administration organisations, educational institutions, etc.
- The private sector ; for instance, companies, partnership limited, educational private institutions, religious organisations, associations, foundations, clubs, community enterprises, etc.

◆ Awards for Tour Programmes

There are 2 sub-categories of the Awards as follows :

1. Domestic Tour Programmes
2. Inbound Tour Programmes

Definition

1. Domestic Tour Programmes

A domestic tour programme is defined as a tour programme offered by a legally licensed company or organisation, in accordance with the Travel Agency Business and Guide Act B.E. 2551 (2008), which provides services for tourists who

reside in Thailand. The proposed domestic tour programmes must include destinations in Thailand only, and be in operation for at least one (1) year to the application deadline.

2. Inbound Tour Programmes

An inbound tour programme is defined as a tour programme offered by a legally licensed company or organisation, in accordance with the Travel Agency Business and Guide Act B.E. 2551 (2008), which provides services for foreign tourists. The proposed inbound tour programmes must mainly include destinations in Thailand, and be in operation for at least one (1) year to the application deadline.

Awards for Tourist Accommodation

There are 5 sub-categories of the Awards as follows :

1. City Hotel
 - 1.1 Have less than 80 rooms.
 - 1.2 Have 80 rooms and over.
2. Resort Hotel
 - 2.1 Have less than 80 rooms.
 - 2.2 Have 80 rooms and over.
3. Boutique Hotel
4. Pool Villa Hotel
5. Convention Hotel

Definition

1. City Hotel

A city hotel is defined as a hotel situated in urban or nearby business centre areas with the objectives to serve business travellers or general tourists. The services or facilities provided by a hotel are not limited in proposing the hotel for the Awards contest, but the operation that focuses on the preservation of the environment, standards of management, guest service, and relationship with the local communities will be considered according to the criteria for judging the Awards.

2. Resort Hotel

A resort hotel is defined as a hotel located in or near tourist attractions with the objectives to serve general tourists. The services or facilities provided by a hotel are not limited in proposing the hotel for the Awards contest. The hotel must have environmental management, promotion of unique local culture, standards of management, guest service, and relationship with the local communities according to the criteria for judging the Awards.

3. Boutique Hotel

A boutique hotel is defined as an accommodation establishment, which differentiates itself from other kinds of hotels with a themed and unusual style of architecture and interior decoration showing arts and culture as a selling point that can attract tourists. Some may be adapted from historic and cultural art buildings that are exceptional. Boutique hotels focus on offering personalised experiences and services which suit the targets' lifestyle and behaviour. They also offer a customised service, which means hotel staff members will look after each guest in every detail. This kind of hotel clearly pays closer attention to the service with customers than other kinds of hotels. The services or facilities provided by a hotel are not limited in proposing the hotel for the Awards contest. The hotel must have environmental management, promotion of unique local culture, standards of management, guest service, and relationship with the local communities according to the criteria for judging the Awards.

4. Pool Villa Hotel

A pool villa hotel is defined as an accommodation establishment offering a private atmosphere and equipped with facilities at a 4 to 5-star level (in accordance with the standard hotel ratings by the Thai Hotel Standard Foundation). There is usually a private swimming pool or Jacuzzi in its area with rooms in the style of a pool villa with at least 50% of the whole. The services or facilities provided by a hotel are not limited in proposing the hotel for the Awards contest. The hotel must have environmental management, promotion of unique local culture, standards of management, guest service, and relationship with the local communities according to the criteria for judging the Awards.

5. Convention Hotel

A convention hotel is defined as a hotel, which provides services for conventions and accommodation, The hotel must have a main room for a conference and seminar of not less than 600 square metres in size.

Awards for Tourist Attractions

There are 6 sub-categories of the Awards as follows :

1. Natural Attractions
2. Historical and Cultural Attractions
3. Agrotourism Attractions
4. Recreational Attractions
5. Community-based Tourism Attractions

Definition

1. Natural and Ecotourism Attractions

Include land or marine areas, which are natural and open to the public to use for tourism, recreation, and learning about the environment, ecosystem, and biodiversity. They are divided as follows : Cover land or marine attractions that are naturally beautiful and distinguished or contain special environment features under the responsibility of public, private, or civil society agencies; such as, land and sea national parks, botanical gardens, wildlife sanctuaries, non-hunting areas, water resources, caves, waterfalls, streams, lakes, hot springs, paleo-biological sites, mangrove forest, islands, beaches, etc. Ecotourism Attractions Include natural land or sea attractions, which are conserved and provide visitors with learning areas of the ecosystem, biodiversity, and local way of life, with the local people's participation, and fair income distribution.

The important qualities of the ecotourism sites are as follows :

- Natural attractions with concentrated conservation.
- Focus on the value of the environment and biodiversity rather than luxurious facilities and services.
- Provide environmentally-friendly ecotourism activities.
- Provide services that focus on information and nature interpretation.
- Give opportunities for locals to participate in rendering services and facilitation to visitors.
- Provide fair economic benefits for the attractions and local people.

2. Historical and Cultural Attractions

Historical and cultural attractions include historical, archaeological, or religious sites, as well as places arranged and decorated to collect pieces, which represent the national or community's arts and culture. It is open to the public to use for tourism and education. These attractions may be under the responsibility of a public or private agency; such as, historical parks, archaeological sites, memorials, religious sites, city walls, moats, etc.

3. Agrotourism Attractions

Agrotourism attractions are defined as places arranged or developed with agricultural purposes; such as, cattle farms, vineyards, horticultural stations, pearl farms, fruit orchards, flower gardens, etc. These attractions provide services and experiences that visitors can join and learn; such as, a guided tour on the set routes and agricultural demonstrations.

4. Recreational Attractions

Recreational attractions include places, which are human-made or developed, and arranged to provide services and facilities which create an enjoyment and learning environment. The recreational attractions can be divided into three subcategories :

Recreational Attractions for Learning

Are places which humans have built or developed focusing on knowledge and understanding enhancement for visitors; such as, museums and learning centres.

Recreational Attractions for Entertainment

Are places which humans have built or developed focusing on providing visitors with enjoyment and entertainment; such as, theme parks, certain kinds of museums, etc.

Recreational Attractions for Adventure

Are places developed or adapted in harmony with the nature. They focus on providing visitors with exciting adventure activities while also giving them pleasure; such as, rockclimbing, bungee jumping, travelling in adventure parks, etc.

5. Community-based Attractions

Community-based attractions are urban or rural communities that offer tourism activities to visitors for experiencing culture, traditions, lifestyles or identity of communities as well as participating in other provided tourism activities. Members of the community designate the direction, plan, and management of tourism.

◆ Awards for Health Tourism

There are 4 sub-categories of the Awards as follows :

1. Health & Wellness Destination
2. Hotel/Resort and Spa
3. Day Spa
4. Thai Wisdom Spa

Definition

1. Health & Wellness Destination

A destination spa is defined as a holistic health promotion spa for body and mind, with accommodation services, fitness equipment, and healthy food. In addition, there might be experts to give consultations and health advice before using the services. Customers can choose the treatment packages : 3 days, 7 days or 10 days, etc.

2. Hotel/Resort and Spa

A hotel/resort spa is defined as a spa centre, which is located in or managed by hotels, resorts, or private companies. It provides services to enhance good health, relaxation, and also beauty services; such as, body wrapping, body scrubbing, hair beauty, facial and body massage, etc., for hotel guests and the general public.

3. Day Spa

A day spa is defined as a spa centre, which solely runs and provides services to enhance good health, relaxation, and beauty services; such as, body wrapping, body scrubbing, hair beauty, facial and body massage, etc. It takes a short period of therapy without staying overnight.

4. Thai Wisdom Spa

A Thai wisdom spa includes Day Spa, Destination Spa, and Hotel/Resort and Spa, with reasonable investment. It provides services that remarkably reflect the Thai identity and wisdom, as well as interior decorations, products, service, and other elements, to promote health and relaxation.



Hall of Fame

Tat Ton National Park

35/5 Tambon Na Fai, Amphoe Muang Chaiyaphum, Chaiyaphum 36000

Tel : 0 4485 3333

E-mail : tatton_np@hotmail.com

Website : portal.dnp.go.th

Submitted by : Tat Ton National Park

Tat Ton National Park is a natural attraction that has received a Thailand Tourism Award of Excellence 3 times in 2013, 2015, and 2017, and will be honoured in the Hall of Fame as a natural attraction. The National Park is outstanding for recreation, which is well-organised, especially in the waterfall area because there is water all year-round. Therefore, it is very suitable for everyone to visit and gain an experience of ecosystem through amusing activities and the natural atmosphere surrounded by Tat Ton Waterfall. Additionally, Tat Ton National Park has also created a network between the related agencies and communities nearby for conserving the natural resources to be sustainable.

Tat Ton National Park





Suan Sampran

"Thai Life : Sufficiency Way of Life"

Suan Sampran

"Thai Life : Sufficiency Way of Life"

Km. 32 Pet Kasem Road, Sampran, Nakorn Pathom 73110

Tel : 0 3432 2588-93 Ext. 5203

E-mail : hotel@sampranriverside.com

Website : www.sampranriverside.com

Submitted by : Sampran Riverside

Sampran Riverside is a recreational attraction for learning that has received a Thailand Tourism Award of Excellence 3 times in 2013, 2015, and 2017, and will be honoured in the Hall of Fame as a recreational attraction of learning. Sampran Riverside has become in the Hall of Fame because of the sustainable tourism management based on the sufficiency economy providing creative tourism that follows the trend but still keeps the unique Thainess. It has also collected the local wisdom and created activities; such as, handcrafts, art, and folk plays, as well as has an organic garden and the Sukjai Market that is creative in the value chain of organic farming based on the sufficiency economy by the Sampran Model Project. Moreover, the attractions are full of facilities and accommodation ; such as, river hotel, Thai houses beside the lake, and the Arusaya Thai Herbal Spa.

◆ Awards for Tourism Support and Promotion Organisations

Public Organisation

Northern Region

Award of Excellence

Nan the sustainable tourism

214/10 Maha Yot Road, Tambon Nai Muang, Amphoe Muang, Nan 55000

Tel : 0 5471 0234, 0 5477 1646

Fax : 0 5475 1169

Email : nancity2011@hotmail.com

Website : www.nancity.go.th

Submitted by : Nan Municipality

The municipality of Nan has organised several tourism promotional activities ; for example, the programs to educate and develop the community, environmental management program, etc. The projects have been implemented continuously by the Authority to be in line with the public relations campaign of Nan as a sustainable tourism city. There are also many other sustainable activities ongoing here such as the Whispering Love in Nan this Cold Season, and the campaign to implement actions to be a safe community at a world-class level which was guaranteed by the World Health Organisation (WHO) in 2013.



Nan the sustainable tourism



Um Phra Dam Nam Ceremony

Award of Outstanding Performance

Um Phra Dam Nam Ceremony

26 Kasemrad Road, Tombon Nai Muang, Muang Amphoe, Phetchabun 67000

Tel : 0 5671 1007

Email : nakornban2012@gmail.com

Website : www.nakornban.net

Submitted by : Phetchabun Municipality

The Phetchabun municipality has implemented several tourist promotional projects to promote the traditions and beliefs of the locals concerning the Buddha Maha Thammaracha and the Um Pra Dam Nam Festival. This event is annually held on the fifteenth day of the waning moon in the 10th lunar month of during Sat Thai Period at Trai Pum Temple. It is also one of the widely known festivals in the area.



Project to Prepare the Community in Readiness for Travel on Highlands



*Songkran, I-san Traditional Festival,
Dok Khun Siang Khaen Festival and Khao Niew Road*

Award of Outstanding Performance

Project to Prepare the Community in Readiness for Travel on Highlands

65 Mu 1 Suthep Road, Tambon Suthep

Amphoe Muang, Chiang Mai 50200

Tel : 0 5328 1238-40

Website : www.hrdi.or.th

Submitted by : Highland Research and Development Institute (Public Organisation)

The Community Potential Development Project for tourism management, under The Highland Research and Development Institute has joined hands with The Royal Projects Foundation to implement and promote sustainable tourism which cooperate with relevant organizations to support the planning process and develop tourism networks and personnel potentiality as well as the tourism standard, marketing and public relations.

Northeastern Region

Award of Outstanding Performance

Songkran, I-san Traditional Festival,

Dok Khun Siang Khaen Festival and Khao Niew Road

1 Pracharat Road, Tambon Nai Muang

Amphoe Muang, Khonkaen 40000

Tel : 0 4322 5617

Email : pp1.0208@gmail.com

Website : www.kkmuni.go.th

Submitted by : Khonkaen Municipality

The Dok Khun Siang Khaen and the Khao Niew Road festival are annually held during the 5th to 15th of April. There are two main activities situated in the Bueng Kaen Nakhon (Traditional style) and along the Khao Niew Road (Sri Chan) which is the contemporary style. The activities are to promote the unity among the people and as a part of the sustainable tourism campaign to promote Khon Kaen to be the City of Events.

Award of Outstanding Performance

Phimai Wittaya School, The School of Arts, Culture and Tourism Promotion

397 Mu14 Ananthajinda Road, Tambon Nai Muang

Amphoe Pimai, Nakhon Ratchasima 30110

Tel : 0 447 1105

Email : phimai@pm.ac.th

Website : www.pm.ac.th

Submitted by : Phimai Wittaya School

The site is an educational institute that is situated in the former Khmer historical community. As the local Pimai school notice the importance of cultural preservation, the school organise several cultural tourism activities as they try to foster their students to be proud of their local wisdom and tradition. Furthermore, these activities also promote local tourism which in turns, making their local way of life be recognised at both local and international levels.

Eastern Region

Award of Outstanding Performance

Ma Rayong Long Pai Prasae Hi

999 Tambon Pak Nam Prasae, Amphoe Klaeng, Rayong 21170

Tel : 0 3866 1720-1

Email : info@prasae

Website : www.prasae.com

Submitted by : The Pak Nam Prasae Sub-district Municipality

The Rayong municipality, in collaboration with local authorities and people, has developed the project to prepare the locals for the ongoing globalisation. The Rayong municipality has also promoted the tourism of Pak Nam Prasae since they realised the abundance of natural resources, the long history as well as the unique way of life here.



*Phimai Wittaya School, The School of Arts,
Culture and Tourism Promotion*



Ma Rayong Long Pai Prasae Hi

Southern Region

Award of Outstanding Performance

University of Life

99 Mu 4, Tambon Lamae

Amphoe Lamae, Chumphon 86170

Tel : 08 6684 0039

Email : keemook@hotmail.com

Website : www.chumphon.mju.ac.th

Submitted by : Department of Tourism Development, Maejo University at Chumphon

Programme in Tourism Development, Maejo University at Chumphon Maejo University at Chumphon has supported tourism in terms of education, research, and academic services with activities that create the involvement and knowledge exchange between the community and university. For example, the participation in tourism networking development by the community, the training on an ecotourism programme by connecting the attractions in the neighbouring provinces, as well as developing cooperation with other related organisations.



University of Life



Community-based Attractions Baan Koh Kerd
Community based Tourism

Private Organisation

Central Region

Award of Outstanding Performance

Community-based Attractions Baan Koh Kerd

Community based Tourism

13/1 Mu 5 Tambon Koh Kerd, Amphoe Bang Pa-In

Phra Nakhon Si Ayutthaya 13160

Tel : 0 3570 2671

Submitted by : Long life Herb Community Enterprise

The local "Samunprai ayu wattana" community enterprise, in collaboration with local authorities and community, has promoted a local tourism campaign on the Ko Koet. Every member of the local community plays an important role in maintaining and conserving the environment as well as local culture, traditions, and the way of life. Visitors can also experience the local way of life here in local homestay residences.



The Buddha Art Gallery



Hygiene and Food Safety Chiang Rai Model

Award of Outstanding Performance

The Buddha Art Gallery

1 Soi Baromraj-Chonnane 119, Baromraj-Chonnane Road

Sala Thammasop Thawiwatthana, Bangkok 10170

Tel : 0 2441 1980

Email : buddhaartgallery1@gmail.com

Website : www.thebuddhaartgallery.com

Submitted by : Thammasapa & Buenluentham Foundation

The Buddha Art Gallery is a project of Thammasapa Banluetham Foundation to provide knowledge and information through the exhibition of Buddhist art to the local students and people. It is also the vision of the foundation to support the Buddhism-related activities in maintaining and preserving the goodwill of the Buddhism.

Northern Region

Award of Outstanding Performance

Hygiene and Food Safety Chiang Rai Model

226/50-55 San Khong Noi Road, Tambon Robwiang

Amphoe Muang, Chiang Rai 57000

Tel : 0 5375 7092

Email : chiangraimodel@gmail.com

Website : www.crfoodsafety.com

Submitted by : Association of Northern Tourism Federation

The Association of Northern Tourism Federation Chiang Rai was established with collaboration of a group of people from tourism, public health, and education sectors that concern the economy and the well-being of the Chiang Rai community. The association of Northern Tourism Federation Chiang Rai has implemented the Food Safety campaign in Chiang Rai to improve the quality of the food supply chain in local tourism businesses as well as the well-being of the local Chiang Rai people.



*Community-based Tourism Management
(Public Interest Organisation)*



People's lifestyle...Khlong Daen Buddhist Community

Award of Outstanding Performance

Community-based Tourism Management
(Public Interest Organisation)

89 Khum Lum Prapat Road, Tambon Chong Kham

Amphoe Muang, Mae Hong Son 58000

Tel : 08 9264 4284

Email : www.sites.google.com/site/cbtinmaehongson

Submitted by : Tourism Network Community, Mae Hong Son

The community-based tourism network enterprise of Mae Hong Son is a learning centre for development of the network communities to collaborate and being a strong network (CBT). The Community has implemented personnel development, knowledge building programme for the network to improve the community-based tourism, as well as adapting the sufficiency economy concept into action by working alongside with the public and private agencies.

Southern Region

Award of Excellence

Way of life in Khlong Daen Buddhist Community

120 Mu 2, Tambon Khlong Daen, Amphoe Ranot

Songkhla 90140

Tel : 08 9231 5281

Email : kreangkrai_srisuk@outlook.com

Submitted by : Khlong Daen Buddhist Community (Public Interest Organisation)

The Klong Dan community has implemented the activities that unite its people; for example, the elders, teenagers, and other minorities are encouraged to participate in the activities. In order to conserve and support the local way of life of the Klong Dan, the local knowledge is applied to many of the activities as well.

Award of Outstanding Performance

Laem Sak Model, The Way of Happiness

208 Tombon Laem Sak, Amphoe Ao Luk, Krabi 81110

Tel : 08 9997 8915

Email : p.chanrit@gmail.com

Submitted by : Laem Sak Tourism Community

The local community of Laem Sak is a unique community that has their own identity "Baba Yaya" shaped by three different cultures that include, Buddhism, Muslim, and Chinese cultures. These long-lasting cultures have their own histories for more than centuries. Here, the local community-based tourism network act as the centre of knowledge of the community that works along with the locals to support and maintain the sustainable tourism campaign in this area.

Award of Outstanding Performance

Community-based Tourism Network, Chumphon

Tourism Network of Chumphon Communities

99 Mu 5, Tombon Lamae, Amphoe Lamae, Chumphon 86170

Tel : 08 9128 4643

Email : christagemy58@gmail.com

Submitted by : Tourism Network of Chumphon Communities

It is a tourism network that concentrates on collaborating and helping each other among its members in the communities to create standard and sustainable development by applying the sufficiency economy philosophy. The activities have been carried out in the form of communities' learning, and local wisdom development.



Laem Sak Model, The Way of Happiness



*Community-based Tourism Network, Chumphon
Tourism Network of Chumphon Communities*

Awards for Tour Programmes Domestic Tour Programmes



Special programs, Follow H.M The King's footsteps at Nakhon Phanom, Sakon Nakhon and Udon Thani



Faith and goodies of Pak Thong Chai City

Nationwide

Award of Excellence

Special programs, Follow H.M. The King's footsteps at Nakhon Phanom, Sakon Nakhon and Udon Thani

111/92 Po Kaew Road, Nawamin, Bungkum, Bangkok 10240

Tel : 0 21 01 2561, 08 3615 1719

Email : P.Incentive@hotmail.co.th

Submitted by : P. Incentive Tour Event Co., Ltd.

The tour programme focuses on tourism in three different cities, Nakhon Phanom, Sakon Nakhon, and Udon Thani, providing the opportunity to learn about the tourist attractions from three different unique experiences. For example, paying homage to sacred beings, visiting the royal projects and the historical site that is also regarded as the world heritage of the UNESCO.

Award of Outstanding Performance

Faith and goodies of Pak Thong Chai City

12 Soi Ramintra 35, Ramintra Road, Anusawari
Bangkhen, Bangkok 10220

Tel : 0 2973 1299

Email : colorfulagent@gmail.com

Submitted by : Colorful Holiday Travel Co., Ltd.

The city of Nakhon Ratchasima can be visited within a single day. This program is ideal for visitors who have limited time or have no intention to stay overnight. The tour begins at Pak Thong Chai City where visitors explore the Wat Na Phra That which was built during the King Rama III era. Afterwards, visitors enjoy their time in the Wat Pa Phothiyyan which is regarded as the UNSEEN place of Pak Thong Chai City. The 5- star OTOP souvenirs are available for selection as will.

Central Region, Eastern Region and Bangkok-Greater Bangkok

Award of Outstanding Performance

The Story of Koh Si Chang, Island of Love

6 Ladprao-Wanghin Road, Ladprao, Bangkok 10123

Tel : 0 2931 7954, 08 8399 5234

Email : mr.oktour005@gmail.com

Submitted by : Confirmed Tour & Travel Co., Ltd.

This 3-day and 2-night tour program is to explore the nature and long history of Ko Sichang. Variety of local products, fresh seafood, and comfortable accommodations are also available for selection. The highlights of this trip are the unique Tuk Tuk Skylab and the friendliness of local people of Ko Sichang. This tour program is ideal for any visitors.



The Story of Koh Si Chang, Island of Love



*Follow H.M The King's Footsteps, Sufficiency Economy,
Pay Homage to Ratchapak Park, Preserve Phetchaburi Craftsmanship,
Visit Talet Pasarn Chat Chai*

Award of Outstanding Performance

Follow H.M The King's Footsteps, Sufficiency Economy,

Pay Homage to Ratchapak Park, Preserve Phetchaburi Craftsmanship,

Visit Talet Pasarn Chat Chai

2 Phra Sumeru Road, Chanasongkarn, Phranakorn, Bangkok 10200

Tel : 0 2282 7614

Email : rattanabralee@hotmail.com

Submitted by : Rattana Bralee Co., Ltd.

There are several historical sites in Phetchaburi, and Prachuap Khiri Khan which made them famous among the tourists. Here, tourists can visit the "Chang-Hua-Mun" Royal initiative project, explore the Wat Yai Suwannaram Phetchaburi, as well as visiting the Rajabhakti Park. The trip is an ideal program for the interested visitors who seek historical experiences.

Northeastern Region

Award of Excellence

The 3 Dhamma route in Udon Thani (Nature, Culture and Dhamma)

599/194 Mu 2 Rong Muang Road, Tombon Mark-Kaeng, Udon Thani 41000

Tel : 08 1 954 1715

Email : chatchawarntour@hotmail.com

Submitted by : Chatchawarn Tour Limited Partnership

It is a unique tour program that combines three different aspects including nature, local culture, and dhamma of Udon Thani. This program will bring the visitors to experience such tourist attractions that have a long history back in the past such as the Phu Phra Bat Historical Park, Wat Pa Phu Kon, local community, and the Ban Chiang Museum.



*Follow the 3 Dhamma route in Udon Thani
(Nature, Culture and Dhamma)*



*Pay Homage to 3 Relics in Nongkhai, Visit Skywalk Pha Tak Sue
and Relax on a Mat, Experience the Community Way of Life*

Award of Outstanding Performance

Pay Homage to 3 Relics in Nongkhai, Visit Skywalk Pha Tak Sue

and Relax on a Mat, Experience the Community Way of Life

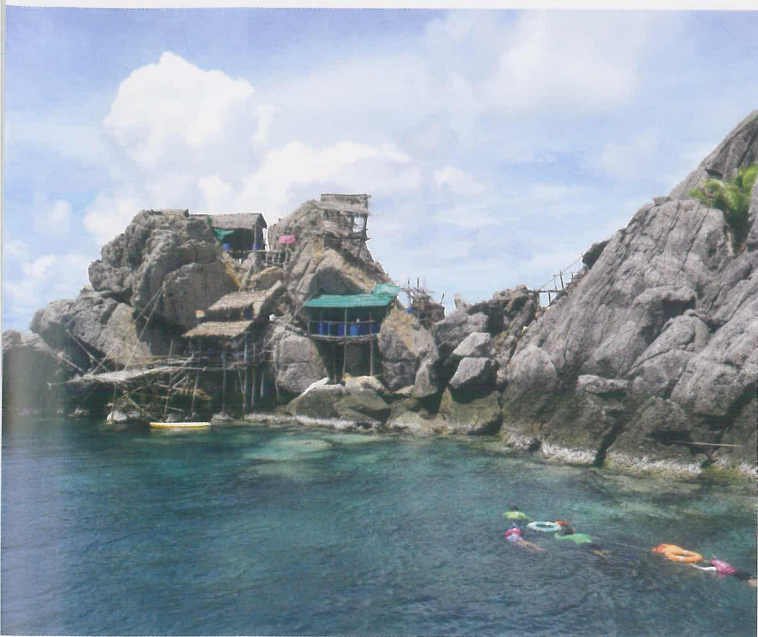
1097 Mu1 Kaew Worawut Road, Tambon Meechai, Amphoe Muang, Nong Khai 43000

Tel : 0 7363 1033, 0 7363 1038

Email : wansaitour@hotmail.com

Submitted by : Wansai Tour

The tour programme that is associated with the cultural aspect of the Nong Khai community. There are aspects of interest including belief and faith of the locals in the sacred Phra That of the Nong Khai, the Mekong river, as well as the ways of life in the Wangnammok community which is also one of the communities to receive the tourism award.



*4 days 3 Nights stay of Ecotourism
at Chumphon Group of Islands*



Satun Miracle Thailand, Land of Harmony

Southern Region

Award of Excellence

4 days 3 Nights stay of Ecotourism at Chumphon Group of Islands

27/63 Porkhun Talay Road, Tambon Makham Tia

Amphoe Muang, Surat Thani 84000

Tel : 0 7740 5288, 08 4051 7027

Email : SCworldexpress@hotmail.com

Submitted by : SC worldexpress

This shallow diving program around Chumphon islands offers the scenic diving spots that illustrate the abundance of the nature within the Chumphon Sea, making it one of the ideal programs for tourists. Besides, visitors will also get to enjoy the night activities such as squish fishing which is challenging and exciting as well.

Award of Outstanding Performance

Satun Miracle Thailand, Land of Harmony

22/28 Ratch-U-Thit Road, Tambon Phiman

Amphoe Muang, Satun 91000

Tel : 0 7472 2077, 08 3534 8990

Email : alensatunvip@hotmail.com

Submitted by : Satun V.I.P Travel Co., Ltd.

It is a fun and exciting tour programme that not many visitors can get to experience. Visitors can learn about the long history of the Satun City as well as the tree at the central mosque which was planted by King Rama 9 himself. Visitors will get to travel along the 4-kilometre Beach Dragon where they can observe the beauty of the Tarutao, and Langkawi islands. Visitors will also explore the Stegodon Cave which is the place where the ancient Stegodon elephants used to live in the past.

Award of Outstanding Performance

Explore Trang

292 Huai Yot, Road, Tambon Tabtieng

Amphoe Muang, Trang 92000

Tel : 0 7521 8031, 08 1817 3604

Email : jitchaya.june@hotmail.com

Submitted by : The Explorer Co., Ltd.

This 3-day and 2-night tour programme of Trang is not common for visitors as it shows the different aspect of Trang where others do not. The tour programme includes visiting the city pillar shrine of Trang, the Kan Tang train station which is the last stop of the Andaman line, as well as the residence of the first governor of Trang. In the morning, visitors get to enjoy the dim sum, and the signature roasted pork of Trung for breakfast. The secrets of the emerald cave and Koh Kradan will also be part of this tour programme as well.

Inbound Tour Programmes

Nationwide

Award of Excellence

7 Days 6 Nights Highlight of Thailand

138 Boonmitr Building, 10th Floor, B9, Silom Road

Suriyawong, Bangrak, Bangkok

Tel : 0 2235 1234

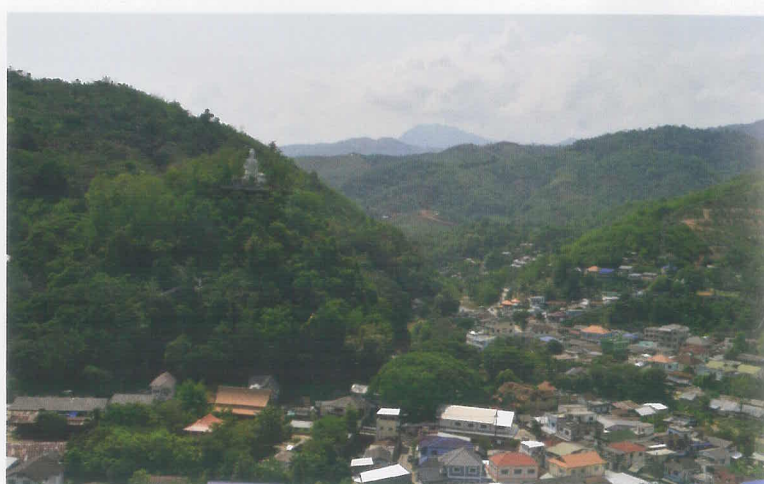
Email : rsvn@aae.travel

Submitted by : AAE All Asia Exclusive Co., Ltd.

This exclusive tour programme offers the VIP service for visitors who desire to travel from Bangkok to Ayutthaya, Phitsanulok, Sukhothai, Phrae, Chiang Rai, and Chiang Mai. The programme lasts for 7 days and 6 nights where visitors can get to visit various historical sites such as the Ayutthaya historical park, the Sukhothai historical park, both were considered as the world's heritage sites as well. Additional activities also include visiting the organic farm, rice planting, dyeing, and traditional style cooking.



Explore Trang



7 Days 6 Nights Highlight of Thailand

Award of Outstanding Performance

"Smoke on the water" Mountain Biking Day Tour

48-50 Soi1, Prapok Road, Tambon Prasingha

Amphoe Muang, Chiang Mai 50200

Tel : 0 5308 9693, 09 5687 9454

Email : info@trailhead.co.th

Submitted by : Trailhead Co., Ltd.

It is one of the international motocross cycling event held in the Doi Suthep Park where the visitors get to know the safety standard and instructions on how to ride safely within the area. There are experts that will guide you on how to ride a mountain bike safely and properly. Along the route, visitors will get to enjoy the scenic view of Doi Suthep and Doi Pui as well as getting to experience the way of the local hill tribe life as well.

Central Region, Eastern Region and Bangkok-Greater Bangkok

Award of Excellence

Trip Program Sustainable Travel "TALAD NOI NEIGHBORHOOD"

2332 New Petchburi Road, Bangkokpi

Huaykwang, Bangkok 10310

Tel : 08 1754 8629

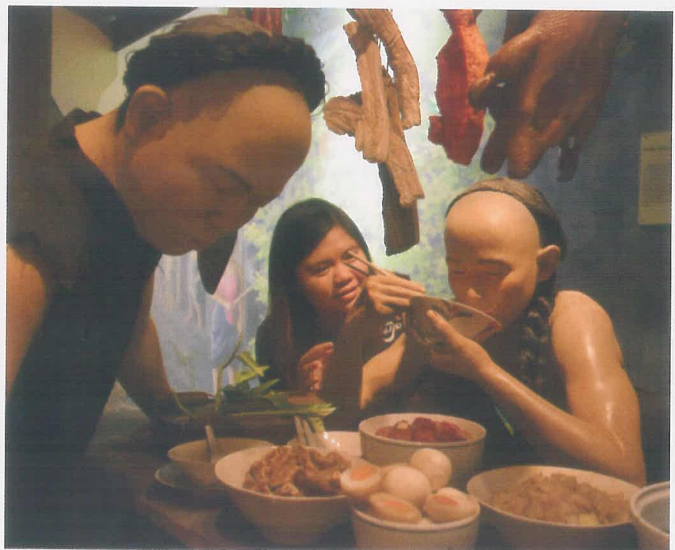
Email : info@hivesters.com

Submitted by : Hivesters Co., Ltd.

This community tour guide programme presents the local identity of urban community in the city through the lens of tourism and the local people's way of life in the Talat Noi community. The culture and traditions of this local community were explored through conversation and exchange of ideas with local people. This programme is also popular among the tourists as well.



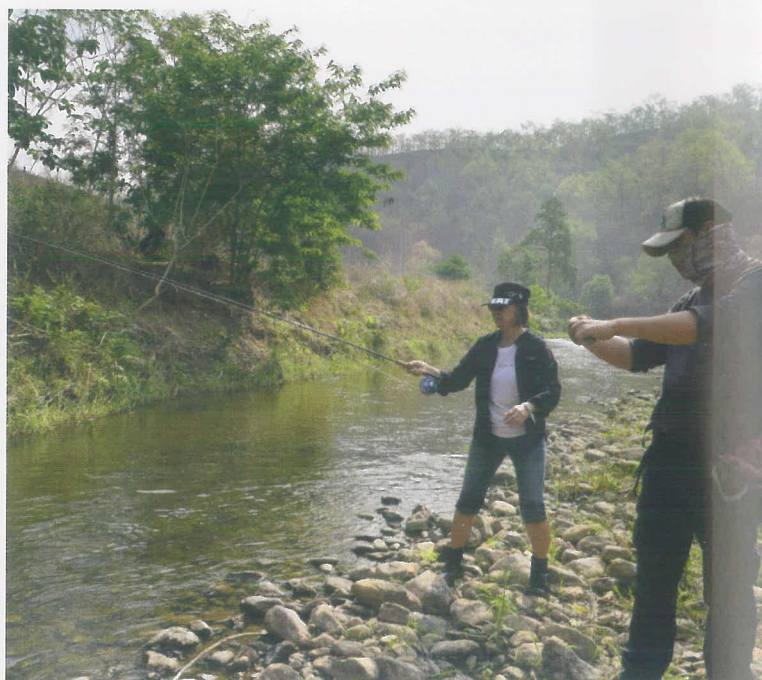
"Smoke on the water" Mountain Biking Day Tour



Trip Program Sustainable Travel "TALAD NOI NEIGHBORHOOD"



Cycling Tour in Phetchaburi



Fly Fishing Project Season 2

Award of Outstanding Performance

Cycling Tour in Phetchaburi

680/7 Mu 5, Tambon Ban Mo, Amphoe Muang

Phetchaburi 76000

Tel : 08 3699 3242

Email : kantawat.nut@hotmail.co.th

Submitted by : Kantawat Group tour and Travel Co., Ltd.

This two-day and one-night cycling tour programme in Phetchaburi offers the tourists with the beauty of the local experiences where they get to learn the Thai traditional way of life. Sufficiency economy, the temple etiquette, traditional cuisines will be presented as well. Here, visitors will also get to participate in the social service activity by building the check dam for the local community.

Northern Region

Award of Excellence

Fly Fishing Project Season 2

60 Tambon Bankad, Amphoe Mae Sariang

Mae Hong Son 58110

Tel : 0 5368 1139

Email : yaranin@hotmail.com

Submitted by : NG River Guides

This famous fishing tour program in Mae Hong Son has made its city well known among the anglers as it provides an international experience for visitors. Here, not only the visitors will get to learn the way of local life, they will also get to contribute to the local tourism programme that follows the sufficiency economy philosophy as well.



The Phuket Explorer

Southern Region

Award of Excellence

The Phuket Explorer

245/45 Tambon Srisuntorn, Amphoe Thalang, Phuket 83110

Tel : 0 7627 2247-8

Email : EK@andamanislandgroup.com

Submitted by : Andaman Island Group Limited Partnership

This tour programme provides a unique experience of Phuket where it focuses on the urban life that reflects on the long tradition of Phuket community. Visitors will also get to know the scenic view of Phuket city from the special sight-seeing spot as well as getting to experience the local agricultural way of Thai people such as rice planting, and rubber tapping.



Conserving Dolphins, Conserving Khanom Environment (Long Tail Boat)



Surin Moken Experience

Award of Outstanding Performance

Surin Moken Experience

120/2 Mu1, Tambon Khura, Amphoe Khuraburi, Phangnga 82150

Tel : 08 7917 7165

Email : info@andamandiscoveries.com

Submitted by : Andaman Discoveries Co., Ltd.

This tour programme offers the speedboat experience to visit the Moken community who reside in the Mu Ko Surin National Park. Visitors will get to experience the culture and the way of Moken community that includes accessories crafting, traditional diving, and travelling on the longboat.

Award of Outstanding Performance

Conserving Dolphins, Conserving Khanom Environment (Long Tail Boat)

40/26 Thetsaban-Kho Khao Beach Road, Tambon Khanom

Amphoe Khanom, Nakhon Si Thammarat 80210

Tel : 0 7532 1573, 09 5412 7828

Email : khnomtour1@gmail.com

Submitted by : Khanom Tour Thailand

This one-day tour programme offers the trip to the Gulf of Thailand to experience the scenic view of the nature surrounding the islands around the Khanom Bay. Visitors will get to join the CSR programme by planting the mangroves, relax in the Fish spa, as well as exploring the beauty within the Khao Wang Thong Cave. However, what makes this programme memorable is that visitors will get to see the rare pink dolphins which are also the highlight of this trip as well.

Awards for Tourist Accommodation



Phanomrungpuri Hotel

City Hotel (Less than 80 rooms)

Northeastern Region

Award of Outstanding Performance

Phanomrungpuri Hotel

212 Prachantakhet Road, Tambon Nangrong

Amphoe Nang Rong, Buriram 31110

Tel : 0 4463 2222, 08 6336 6618

Fax : 0 4463 3800

Email : ninfo@phanomrungpuri.co.th

Website : www.phanomrungpuri.co.th

Submitted by : Phanomrunglepuri Hotel



Phanomrunglepuri the Boutique Hotel & Resort is situated nearby the Phanom Rung Historical Park. The hotel was founded with the intention of preserving the local art and culture of the Isan people. The architecture of the hotel was built under the influence of Khmer that mixed with local Isan style. The hotel is also equipped with facilities that include dining room, meeting room, swimming pool, and a big garden. The hotel is also designed for everyone (Friendly design) that is able to accommodate everyone. No matter who you are, we are willing to provide an impressive service for you under the slogan of "As warm as your home with quality standard that anyone can come and stay here"



Ratilanna Riverside Spa Resort Chiang Mai

Resort Hotel (less than 80 rooms)

Northern Region

Award of Excellence

Ratilanna Riverside Spa Resort Chiang Mai

33 Chang Khlan Road, Amphoe Muang, Chiang Mai 50100

Tel : 0 5399 9333

Fax : 0 5399 9332

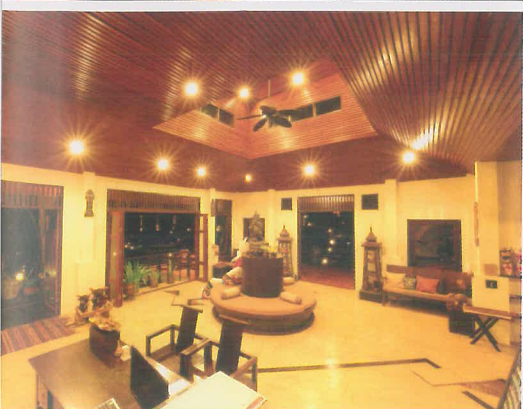
Email : info@ratilannachiangmai.com

Website : www.ratilannachiangmai.com

Submitted by : Ratilanna Riverside Spa Resort

It is a luxurious resort by the bank of the Ping River with fascinating historical sights of the Lanna Kingdom. It maintains the beauty of architecture representing the ways of life of the ancient Wat Ket community and mixes the identity of Northern arts with the charms of the North, which is rich in natural resources, in its decoration. The environment is preserved and awareness is raised to consume less, but maximise the profit. Care is given to protect the river banks from deterioration. The green surroundings are created by growing various species of plants to make fresh, pure, and pleasant air for leisure. Located in the heart of Chiang Mai downtown, just 4 km. from the Chiang Mai International Airport, the hotel offers a friendly Lanna Thai-style service with a warm welcome to every guest, which creates a memorable impression.





Phu Na Come Resort

Northeastern Region

Award of Outstanding Performance

Phu Na Come Resort

461 Mu 3 Ban Doen, Tambon Dansai

Amphoe Dansai, Loei 42120

Tel : 0 4289 2005-6, 0 6385 1255

Email : neeracha@phunacomeresort.com

Website : www.phunacomeresort.com

Submitted by : Phu Na Come Resort

Phu Na Come Resort is located in the Northeast (Isan) region amidst the nature with a 360-degree view of mountains and architecture of local wisdom that reflects the beauty and simplicity. Based on the concept of a green heart hotel, the operator has organised many projects to preserve the environment; for instance, a garbage bank, a green society, a sufficiency economy learning centre for the clients and community to be self-reliant, rice farming, buffalo raising, toxin-free vegetable growing, organic fertiliser and cleaning liquid making for use in the resort. The hotel is proud to be a part of the creation of a good society under the projects; such as Green Leaf Hotel Project, Health Promotion Hotel Project, and Smoking-free Hotel Project. It has won many awards, including the 9th Thailand Tourism Awards 2013, ASEAN Green Hotel Awards 2012-2014, Thailand Energy Awards 2014, ASEAN Energy Awards 2014, and lately the Thailand Boutique Awards 2014-2015

Western Region

Award of Outstanding Performance

Baan Talay Dao Hotel

2/10 Soi Muban Takiap, Phetchakasem Road, Tambon Nong Kae

Amphoe Hua Hin, Prachuap Khiri Khan 77110

Tel : 0 3253 6024, 09 2569 0888, 09 2569 5888

Fax : 0 3253 6031

Email : baantalaydao@baantalaydao.com

Website : www.baantalaydao.com

Submitted by : Baan Talay Dao Hotel



Baan Talay Dao Hotel

Located on the long lying, beautiful, white and clean Hua Hin-Khao Takiap Beach is Baan Talay Dao, a 32-room hotel in the surrounding nature of a seaside forest plantation. There are local trees of over 30 years old; such as Phayom, Makha Tae, Chaeng, etc., a calm sea, beautiful sky, and an ancient house of over 90 years old. The landscape is well designed in the style of an old-time royal resort. The management's policy is to have international service standards with local Thai ways and preserve the environment. It is focused on an environmentally-friendly service; the staff is allowed to take part in activities of environmental management, as well as reduction of energy consumption, garbage, and chemicals. Moreover, the philosophy of sufficiency economy is applied to the business operation, and the staff, community, and society live in harmony with the environment for the sustainability of the business operation.

Resort Hotel (80 rooms and over)

Eastern Region

Award of Excellence

Siam Bayshore Pattaya

559 Mu 10, Tambon Nong Prue, Amphoe Bang Lamung

Chon Buri 20150

Tel : 0 3842 8678-81

Fax : 0 3842 8730

Email : siambayshore@sukosolhotels.com

Website : www.siambayshorepattaya.com

Submitted by : Siam Bayshore Pattaya Hotel

Siam Bayshore is a resort accommodation situated near the Bali Hai Pier, with more than 60% of its area still maintaining the natural atmosphere of the seashore with beach plants and fresh air ideal for private relaxation. It offers facilities and international standard services to Thai as well as foreign guests to enhance their successive confidence and impression. It has also attached importance to the environment and joined the Green Leaf Foundation since 1997; was granted the EIA Monitoring Award 2012 held by the Public Health and Environment Division of Pattaya City and the Ministry of Natural Resources and Environment; equipped with a biogas generator, and helped reduce global warming conditions and effects to the ecosystem. The Siam Bayshore has built a good relationship and taken part in activities held by nearby communities and local organisations while still providing hospitable services and maintaining its unique Thainess.



Siam Bayshore Pattaya

Award of Outstanding Performance

Cape Dara Resort Pattaya

256 dara beach, soi 20, Pattaya-Naklua Road, Pattaya, 20150

Tel : 0 3893 3888

Fax : 0 3893 3800

Email : reservation@capedarapattaya.com

Website : www.capedarapattaya.com

Submitted by : Cape Dara Resort Pattaya

Cape Dara Resort is situated on its own private beach with a rising 26 stories above a quiet residential section of North Pattaya, the resort stands amid lush natural surroundings including its own private beach on beautiful Pattaya Bay. At Cape Dara, guests enjoy the calm and tranquillity of a seaside retreat, yet all the while are but minutes from the pulsing centre of one of the world's top destinations for leisure and business travel. In the Thai language, the word Dara means 'star', and Cape Dara Resort indeed brings you closer to the stars. All 264 guest rooms, suites and villa have open-sky views. In fact, the resort has the distinctive feature as the area's only accommodation in which every room features exhilarating glimpses in all directions.



Cape Dara Resort Pattaya



Centara Grand Beach Resort & Villas Hua Hin

Western Region

Award of Outstanding Performance

Centara Grand Beach Resort & Villas Hua Hin

1 Damnernkasem Road, Tambon Hua Hin, Amphoe Hua Hin

Prachuap Khiri Khan 77110

Tel : 0 3251 2021-38

Fax : 0 3251 1014

Email : chbr@chr.co.th

Website : www.centarahotelsresorts.com/chbr

Submitted by : Centara Grand Beach Resort & Villas Hua Hin

It is Thailand's first seaside resort (former Rotfai Hotel), and among the world's leading hotels. Located in the heart of Hua Hin, it is a preserved building remarkable for majestically colonial architecture and a giant topiary garden, on an area of 74 rai of land. The hotel has the five-star standard of service that still maintains the Thai identity. The management policy is focused on the importance of the environment and sustainable tourism, as well as the environmentally-friendly procurement and product use. Furthermore, there is the worthy use of resources, wastewater treatment, efficient use of electricity, production of hot water by solar energy, ozone laundry system, consciousness-raising about the reduction of global warming among its staff, suppliers, and clients, and emphasis on participation in the local community's activities.

Southern Region on the West Coast

Award of Outstanding Performance

Phuket Graceland Resort & Spa Hotel

190 Thaweewong Road, Tambon Patong, Amphoe Kathu, Phuket 83150

Tel : 0 7637 0555

Fax : 0 7637 0550

Email : info@phuketgraceland.com

Website : www.phuketgraceland.com

Submitted by : Phuket Graceland Resort & Spa Hotel



Phuket Graceland Resort & Spa Hotel

With more than 600 accommodation rooms, the Phuket Graceland Resort and Spa can respond to every desire of client groups. The decoration is made in a contemporary Sino-Portuguese style and in perfect harmony with nature, which is unique. The area is next to Hat Patong allowing a beautiful atmosphere of the Andaman Sea to be admired easily. Besides its readiness in service, the resort attaches importance to environmental preservation, reduction of energy use, renewable energy use by setting a management policy in parallel with the conservation of energy and the environment in a concrete manner; such as, the formation of green spaces in all areas to decrease electricity use and noise pollution, proper garbage separation, production of biogas and bio-fermented juice from food waste, boiling water by a solar panel for guests' rooms, etc. In addition, there is also the participation in the reduction of energy use and environmental preservation, and cooperation with outside agencies in environmental protection.

Award of Outstanding Performance

Dusit Thani Krabi Beach Resort

155 Mu 2, Nong Thale Muang, Krabi 81180

Tel : 0 7562 8000

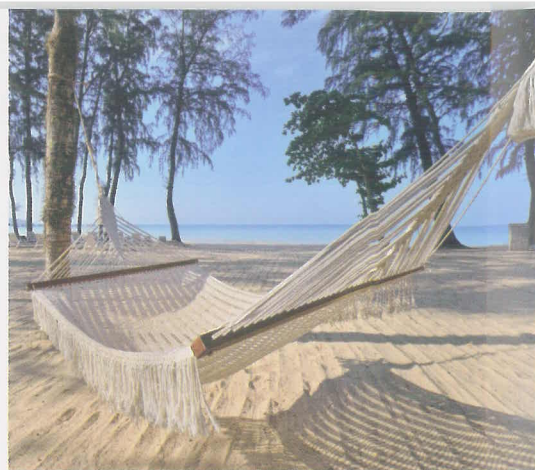
Fax : 0 7562 8028

Email : dtkr@dusit.com

Website : www.dusit.com

Submitted by : Dusit Thani Krabi Beach Resort

Nestled discreetly in a secluded area, just steps away from the pristine, white sand Klong Muong Beach, lies the Dusit Thani Krabi Beach Resort. Set in the exotic landscape of Krabi province, the Dusit Thani Krabi Beach Resort is only moments away from the beautiful cliff formations, lush forests, waterfalls and caves the province is known for. Dusit Thani Krabi offers 240 guest rooms and suites, two inviting beachfront pools, a variety of restaurants and a spa set in the vast tropical gardens, the Dusit Thani Krabi Resort is the perfect retreat for families and those on business travel, just a one-hour flight away from Bangkok



Dusit Thani Krabi Beach Resort

Pool Villa Hotel

Nationwide

Award of Outstanding Performance

Santhiya Koh Phangan Resort and Spa

22/7 Mu 5 Tambon Bantai, Koh Phangan, Suratthani, 84280

Tel : 0 7742 8999

Fax : 0 7742 8900

Email : info.spn@santhiya.com

Website : www.santhiya.com/kohphangan

Submitted by : Santhiya Koh Phangan Resort and Spa

It has a Thai identity that is remarkable and can be seen upon arrival. Rooms are offered in traditional Thai teakwood houses. One fifth of the area is really in use as accommodation rooms while the remaining space is a natural forest plantation to allow clients to be in touch with nature as much as possible. Large trees in the hotel's area have been there since the beginning of the hotel's construction. Additionally, there are more than 100 species of plants growing naturally in the surroundings. The hotel has the management policy that realizes Thai culture and ways of life to preserve Thai traditions and culture. It is also focused on the preservation of nature and the environment by means of using environmentally-friendly products mostly, as well as participation in the development of nearby communities to make them strong.



Santhiya Koh Phangan Resort and Spa

Convention Hotel

Nationwide

Award of Outstanding Performance

Royal Cliff Hotels Group

353 Phra Tamnuk Road, Pattaya, Chonburi, Thailand 20150

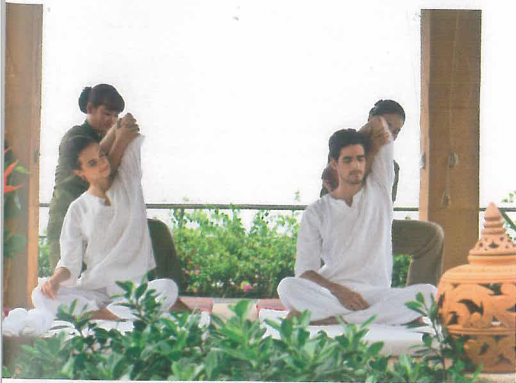
Tel : 0 3825 0421-40

Fax : 0 3825 0511-13

Email : relax@royalcliff.com

Website : www.royalcliff.com

Submitted by : Royal Cliff Hotels Group



Royal Cliff Hotels Group

It is a fascinating private leisure kingdom on the East coast. As a leader in energy conservation and environmental preservation, it has campaigned to raise awareness, reduce the use of resources, the amount of polluted garbage, and the use of chemicals. Also, the Group takes pride in being a part of society to promote sustainable development. Located on an area of more than 100 rai of land are four five-star hotels totalling 1,020 accommodation rooms. Each of the hotels has uniqueness with the extravagance of place and premium decorations. Facilities are fully equipped, including 11 restaurants, 7 swimming pools, Cliff Spa, Nah Pah Cooking School, Fitz Club, beach, 2 helipads, Funtasea : Kids World, The Verge (Coolest teen zone), conference rooms, banquet halls, PEACH (Pattaya Exhibition and Convention Hall)-a meeting centre of world-class standards with a usable space of 22,516 square metres. Furthermore, the services with hospitality are impressive, and very well respond to every style of tourism of both Thai and foreign tourists.





Awards for Tourist Attractions

Natural Attractions



Doi Pha Hom Pok National Park

Northern Region

Award of Excellence

Doi Pha Hom Pok National Park

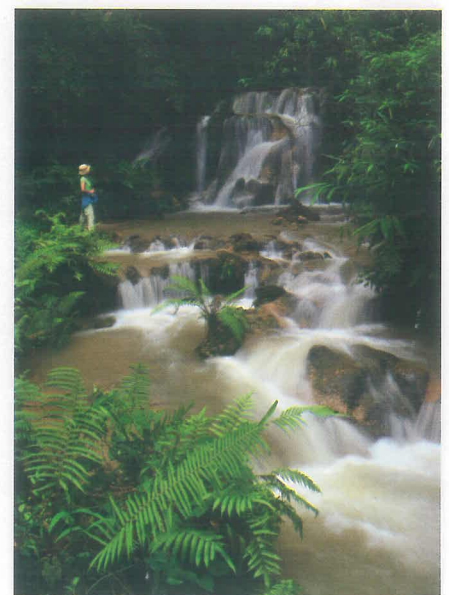
224 Mu 6 Tambon Pong Nam Ron, Amphoe Fang, Chiang Mai 50110

Tel : 0 5345 3517

Website : www.dnp.go.th

Submitted by : Doi Pha Hom Pok National Park

It is the second highest mountain in Thailand comprising spectacular scenic points of the sea of mist and sunrise and sunset. The weather is cool all year round. The highlight of the Park is the Kaiser Hot Spring, a kind of spring that has a high temperature and high water pressure gushing above the ground. The Park is also a habitat for rare species of plants and wildlife; such as Kaiser Imperial Butterfly, and Pha Hom Pok Emerald Butterfly. The fertile forest is a water source of the Fang River. There are plenty of tourist activities offered; for instance, mineral water bathing, steaming, traditional Thai massage, bird, butterfly, and insect watching, and a nature trail for studying the ecosystem around the hot spring.



Award of Outstanding Performance

Doi Phu Kha National Park

Pua-Bo Kluea Road, Tambon Phu Kha

Amphoe Pua, Nan 55120

Tel : 0 5473 1623, 08 2194 1349

Email : doiphukha_np@hotmail.com

Website : www.dnp.go.th

Submitted by : Doi Phu Kha National Park

Situated on a high mountain with an altitude of 1,980 metres above sea level, Doi Phu Kha National Park covers watershed forest, which is the origin of the Nan River and various streams. It is abundant with flora and fauna, including rare endemic species of plants that can be found only in this place; those are Chomphu Phu Kha (*Bretschneidera sinensis* Hemsl) and Giant Fishtail Palm, which is an ancient palm. Visitors can enjoy various activities; for example, walking along the nature study trail, stargazing, watching birds and butterflies, admiring waterfalls and caves, and rafting on the Wa River.

Award of Outstanding Performance

Chae Son National Park

343 Tambon Chae Son, Amphoe Muang Pan

Lampang 52240

Tel : 0 5438 0000, 08 9854 3355

Email : www.dnp.go.th

Submitted by : Chae Son National Park

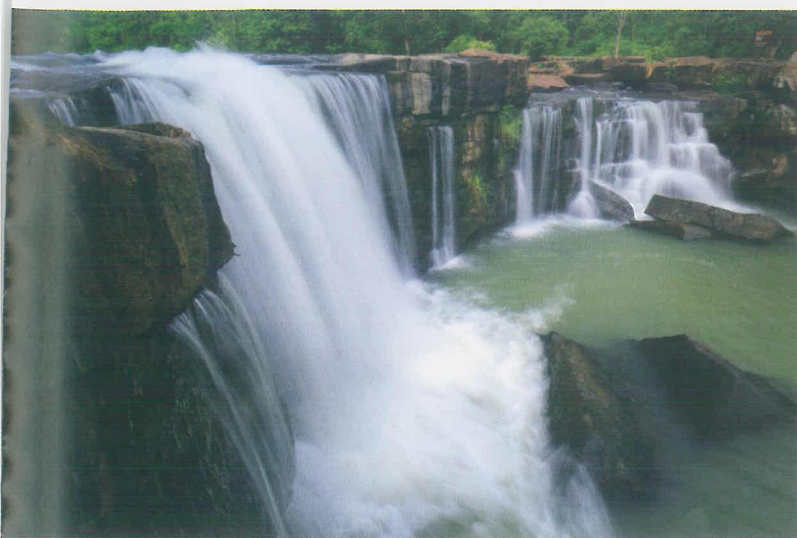
It is a natural tourist attraction that is abundant with the varieties of plant and wildlife. In addition, there are several hot springs and spas, along with stunning waterfalls under the well-managed authority that concerns for the environment. The electricity is generated through the hydropower works. There are also several local homestays and tents services available within the National Park; however, the tourists should always follow the regulations for their safety.



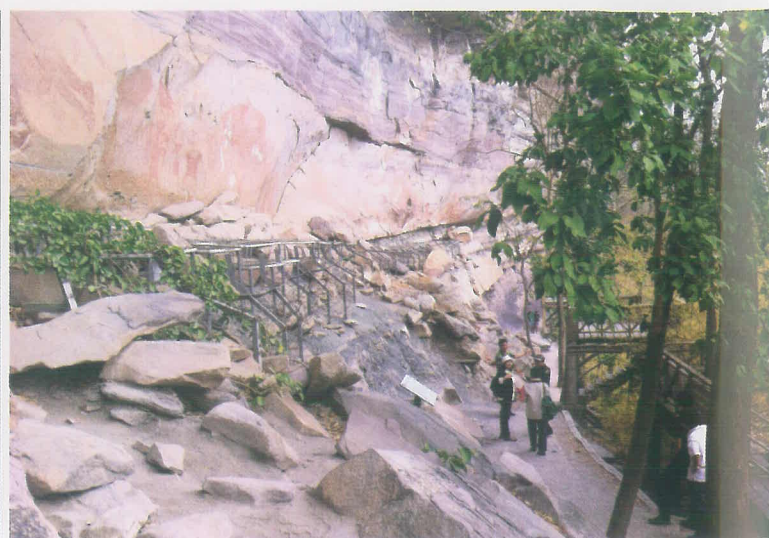
Doi Phu Kha National Park



Chae Son National Park



Tat Ton National Park



Pha Taem National Park

Northeastern Region

Award of Excellence

Tat Ton National Park

35/5 Tambon Na Fai, Amphoe Muang

Chaiyaphum, 36000

Tel : 0 4485 3333

Fax : 0 4485 3333

Email : tatton_np@hotmail.com

Website : www.dnp.go.th

Submitted by : Tat Ton National Park

It is the origin of numerous rivers; such as Lam Huai Pa Thao, Lam Huai Siao, Lam Huai Cho Raka, and Lam Huai Chi Long, flowing all together into the Chi River. There is also an abundant forest area that is suitable for the study and research centre of natural resources, wildlife and plants. In addition, visitors can enjoy gorgeous waterfalls filled with water all year round. Alongside the rivers are also enhanced with various kinds of abundant plants that create a shady atmosphere.

Award of Outstanding Performance

Pha Taem National Park

Tambon Huai Phai, Amphoe Khong Chiam

Ubon Ratchathani 34220

Tel : 0 4553 8026, 08 3356 3874

Fax : 0 4524 9780

Email : phataem_np@hotmail.com

Website : www.dnp.go.th

Submitted by : Pha Taem National Park

Located on the easternmost end of Thailand, the Park is well-known for the pre-historic paintings of Pha Taem, and Pha Mon, and Sao Chaliang Rock pillars-a natural sculpture. There are also scenic routes for the tourists to admire many rare endemic species of plants, Sao Chaliang Rock pillars, pre-historic paintings of Pha Taem and Pha Mon, as well as the Sang Chan Waterfall within the park.



Phu Pha Thoep National Park



Sirindhorn Peat Swamp Forest Nature Research and Study Center

Award of Outstanding Performance

Phu Pha Thoep National Park

25 Mu 5, Mukdahan-Don Tan Road, Tambon Na Si Nuan

Amphoe Muang, Mukdahan 49000

Tel : 09 7315 6000

Email : Suwanna73219@gmail.com

Submitted by : Phu Pha Thoep National Park

Generally, the Park comprises a combination of mountains and sparse forest area, high terrain, sandstone ground and a pile of overlapping stones in different shapes. Apart from its beautiful scenery, the Park is the origin of many streams; the main important ones with water all year round are Huai Sing, Huai Sai Phai, Huai Ruea, and Huai Chang Chon, which serve as water sources for wildlife, public utility for the Park's staff and tourists as well as water sources for agricultural purposes for the surrounding communities.

Southern Region

Award of Excellence

Sirindhorn Peat Swamp Forest Nature Research and Study Center

9 Mu 5 Chawananan Road, Tambon Puyo

Amphoe Sungai Kolok, Narathiwat 96120

Tel : 08 1898 0881, 09 8015 8395

Email : Prptd55@gmail.com

Submitted by : Sirindhorn Peat Swamp Forest Nature Research and Study Center

The peat swamp forest is one of the biggest woodlands in Thailand. As The Sirindhorn Peat Swamp Forest Nature Research and Study Centre is concerned about the importance of the peat swamp forest, hence, they aim to provide on their knowledge and their concern to the public. The centre itself is also one of the ecotourism destinations that consist of the large water reservoir and the home of wide ranges of wildlife in the Narathiwat as well. The peat Swamp Forest itself can also be considered as an outdoor environmental museum and library that is no less than a knowledge centre.

Award of Outstanding Performance

Tham Le Stegodon "Find the heart at the end of the tunnel"

Baan Kiriwong Mu7 Tambon Thung Wa

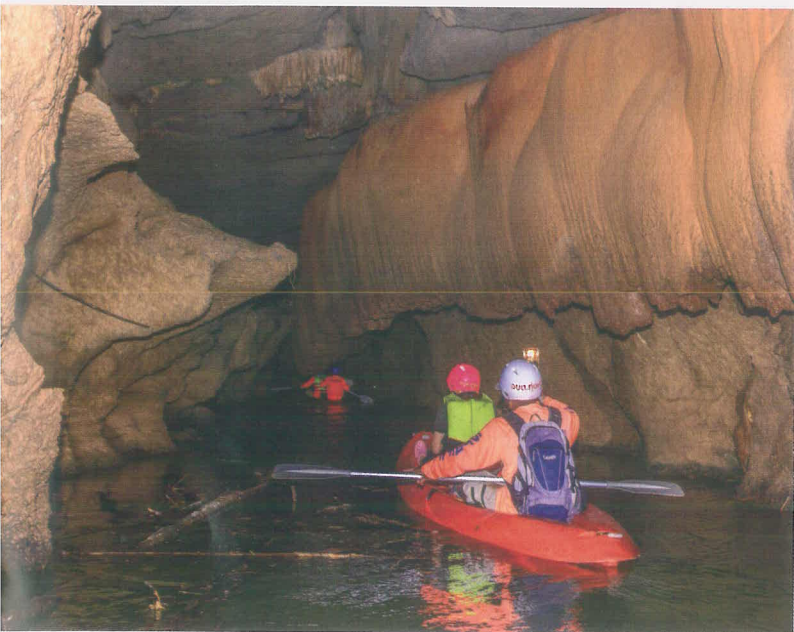
Amphoe Thung Wa, Satun 91120

Tel : 08 1738 4391

Email : phongiw@yahoo.com

Submitted by : Satun Geopark

Visitors can be a bit more adventurous at Tham Le Stegodon, a stream cave and admire various shapes of stalagmites and stalactites. To get inside the cave, visitors have to go by kayaking and they are required to wear life jackets, helmets, and be equipped with torches for safety and light. Visiting is allowed only during the low tide period.



Tham Le Stegodon "Find the heart at the end of the tunnel"



Koh Kam Tok Island (Ao Khao Khwai Bay), Koh Khang Khao Island, Koh Yipun Island, Laem Son National Park

Award of Outstanding Performance

Koh Kam Tok Island (Ao Khao Khwai Bay), Koh Khang Khao Island,

Koh Yipun Island, Laem Son National Park

Andaman Sea, Tanbon Naka, Amphoe Suk Samran, Ranong 85120

Tel : 0 7786 1431

Email : detchforest@gmail.com

Submitted by : Laem Son National Park

There are many scenic spots within this National Park that include a long white sand beach with a natural pine forest. To protect the cove and the surrounding coral reefs, the tourist boats are not permitted to dock within the coral reefs area.

Historical and Cultural Attractions

Nationwide

Award of Outstanding Performance

Phra Buddha Metta Pracha Thai Trai Lokanat Gandhara Anusorn

Wat Thipsukontharam, U-Thong Road, Bo ploy, Tambon Don Salap

Amphoe Huai Krachao, Kanchanaburi 71170

Tel : 0 3451 0993

Email : museum.pbt@gmail.com

Submitted by : Phra Buddha Metta Pracha Thai Foundation under the Royal Patronage of His Majesty the King

The Phra Buddha Metta Pracha Thai Trai Lokanat Gandhara Anusorn is situated in the area of more than 320 rai. It is the location of the seated Buddha statue from Gandhara that has the height of 32 meters and able to withstand more than 9.7 magnitude earthquake. There are also the exhibitions of the enlightenment as well as other important aspects of the Buddhism, along with the history of Buddhism.

Award of Outstanding Performance

Sri Thep Historical Park

208 Mu 13, Tambon Sri Thep, Amphoe Sri Thep

Phetchaboon 67170

Tel : 0 5692 1317, 0 5692 1322

Submitted by : Sri Thep Historical Park

It is the tourist spot that lies the history of Dvaravati period. There were many historical findings such as skeletons, pottery, as well as iron tools. In addition, there are also many historical buildings with Khmer architecture such as the Song Phi Nong pagoda, Sri Thep pagoda, Rusi Pagoda, and other religious places.



Phra Buddha Metta Pracha Thai Trai Lokanat Gandhara Anusorn



Sri Thep Historical Park



Rai Khun Mon Thai Wisdom Learning Centre



The Blooms Orchid Park

Community-based Attractions

Nationwide

Award of Outstanding Performance

Rai Khun Mon Thai Wisdom Learning Centre

357 Mu 2, Tambon Nongkhum, Amphoe, Bo Ploi

Kanchanaburi 71160

Tel : 08 1944 7971, 08 0659 2244

Email : raikhunmon.kan@gmail.com

Submitted by : Chirman of Rai Khun Mon Thai Wisdom Learning Centre

Rai Khun Mon is a unique tourist spot that integrates both agricultural aspects and local wisdom which creates a variety of employment opportunities that lead to the sustainability of the community. There are several activities within the Rai Khun Mon; for example, corns producing, sesame oil extracting, asparagus farming, as well as biomass and charcoal manufacturing.

Award of Outstanding Performance

The Blooms Orchid Park

65 Mu7, Tambon Wat Kaew, Amphoe Bang Phae

Ratchburi 70160

Tel : 08 6111 0084, 08 7111 4436

Email : thebloomsorchidpark@gmail.com

Website : www.thebloomsorchidpark.com

Submitted by : The Blooms Orchid Park Co., Ltd.

Visitors can enjoy their time in a park enriched with a variety of orchids where they can also visit the demonstration lab that shows how the orchids are reproduced via the special techniques known as the plant tissue culture, seed cultivation, and mixed farming technique. There are also trees such as the rosewood, Shorea, and much more which are considered to be rare.

Northern Region

Award of Excellence

Royal Agricultural Station Angkhang

1 Mu 5 Tambon Mae Ngon, Amphoe Fang

Chiang Mai 50320

Tel : 0 5396 9476-8

Email : angkhang50@gmail.com

Website : www.angkhangstation.com

Submitted by : Royal Agricultural Station Angkhang

The Royal Agricultural Station Ang Khang in Chiang Mai Province focuses on agricultural activities such as flower and fruit planting and has a vast array of plants that have been decorated with the Bonsai technique. This royal project was originated from the idea of His Late Majesty King Bhumibol Adulyadej to encourage local farmers to change their way of life from illegal agricultural farming to winter plant farming as well as other sustainable tourism activities. The ideal time to visit this place is also throughout the year.



Royal Agricultural Station Angkhang



Singha Park Chiang Rai

Award of Outstanding Performance

Singha Park Chiang Rai

99 Mu 1, Tambon Mae Korn, Amphoe Muang

Chiang Rai 57000

Tel : 09 1576 0374

Submitted by : Singha Park Chiang Rai

Singha Park Chiang Rai is a blend of agriculture and tourism where there are varieties of agricultural activities; for example, tea plantations, strawberry and barley farms, as well as Japanese standard tea factory. Visitors can do many activities such as riding a bike around the farm, picking fresh seasonal fruits, and feeding the animals. There are also special events such as the farm festival on the hill, and the fiesta balloons festival which is the largest international balloon festival in the South East Asia.

Award of Outstanding Performance

Kamnan Chul Farm

442 Mu 3 Tambon Wangchompu, Amphoe Muang

Phetchabun 67210

Tel : 0 5677 1101, 0 5677 1555

E-mail : kamnanchulfarm@gmail.com

Website : www.kamnanchul.com

Submitted by : The Chul Cunvong Co., Ltd.

It is a tourist destination that follows the philosophy of sufficiency economy concept. It is a suitable place for everyone that includes disabled and elderly people. Chul Cunvong Farm operates in both farming and silk manufacturing business. For farming, there are many kinds of plants available here. Visitors can also visit the farm in 3 unique ways; farm visiting where the visitors get to walk through and experience the beauty of the farm. Secondly, farm eating, the visitors enjoy the clean products of the farm and lastly, fun activities farm where visitors can enjoy their time in the available mini zoo.



Kamnan Chul Farm



Khaoyai farm village

Northeastern Region

Award of Outstanding Performance

Khaoyai Farm Village

16 Mu7, Nikhom Lamtakong, Tambon Khanong Phra

Amphoe Pak Chong, Nakhon Ratchasima 30130

Tel : 09 8120 4761

Email : Manager@khaoyaifarmvillage.com

Website : Khaoyaifarmvillage.com

Submitted by : Khaoyai farm village

Khaoyai farm village is an agricultural tourism site that presents itself as the agro-tourism that permits visitors to follow and study from experienced agricultural specialists. Visitors can also enjoy mushroom picking, homemade pizza and salad cooking. Photo shooting, and animal feedings are also available to visitors.



PB Valley Khao Yai Winery



Suan Yai Da-Jae Boonchuen

Award of Outstanding Performance

PB Valley Khao Yai Winery

102/2 Mu 5 Mittraphap Road, Tambon Phaya Yen

Amphoe Pak Chong, Nakhon Ratchasima 30320

Tel : 08 9831 2010

Email : info@khaoyaiwinery.com

Website : www.khaoyaiwinery.com

Submitted by : PB Valley Khao Yai Winery

PB Valley Khao Yai Winery is situated on an area of more than 2,500 rai amidst the valley of Khao Yai, Nakhon Ratchasima province, P.B Valley offers a vineyard tour on a tram ride where visitors get to visit the biggest wine manufacturing factory in Southeast Asia with assistance from the staff who give a demonstration and guidance. In addition, visitors can enjoy tasting wines that are nurtured in oak barrels imported from France. Other services include a souvenir shop, table grapes, and other products; such as grape juice, passion fruit juice, and various kinds of wine.

Eastern Region

Award of Outstanding Performance

Suan Yai Da-Jae Boonchuen

30 Mu 2, Amphoe Muang, Rayong 21000

Tel. : 08 9099 1297

Website : www.suanyaida.net

Submitted by : Mrs. Boonchuen Pokaew

It is a fruit orchard that yields its crop all year-round, guided by the sufficiency economy philosophy, the development of knowledge and value to the agricultural style here have led to the sustainable tourism of this community. Visitors can enjoy varieties of activities that include learning, and garden walking. One of the signature activities here is the fruits buffet that follows the principle of sufficiency economy where you eat what you planted.

Southern Region

Award of Outstanding Performance

Sufficiency Economy Agrotourism Village, Thung Tako

60 Mu 2 Tambon Thung Takhrui, Amphoe Thung Tako 86220

Tel : 08 1568 9554

Submitted by : Thung Tako Homestay Community

The site is a learning centre of the royally-initiated sufficiency economy concept that provides various kinds of agricultural knowledge; for example, mixed farming. By utilising the sufficiency economy, each household within the community is able to gather seasonal fruits within the garden throughout the year. There are also several unique attraction spots; for example, the concept of a 9-storey condominium agricultural garden, and the one-rai sufficiency economy garden.

Award of Outstanding Performance

Pikun Thong Royal Development Study Centre

95 Tambon Kaluwo Nuea, Amphoe Muang

Narathiwat 96000

Tel : 0 7363 1033, 0 7363 1038

Fax : 09 2279 8058

Email : cpt_1@ltd.go.th

Website : www.pikunthong.com

Submitted by : Pikun Thong Royal Development Study Centre

Pikun Thong Royal Development Study Center is not just any ordinary museum, but it is where agricultural, societal, and educational officers gather to educate and assist the people regarding their career opportunities. The highlight of this centre is its layout design and how the buildings are well-maintained. This centre also provides the information and demonstration about economic and social development training in the nearby villages. The centre provides bits of knowledge for soil development in the areas with problems to the people and spread to other areas.

Sufficiency Economy Agrotourism Village, Thung Tako



Pikun Thong Royal Development Study Centre

Recreational Attractions for Learning

Central Region

Award of Excellence

Sampran "Thai Life : Sufficiency Way of Life"

21 Mu 2 Phet Kasem Road, Km. 32 Pet Kasem Road

Tambon Yai Cha, Amphoe Sampran, Nakorn Pathom, 73110

Tel : 0 3432 2588-93 Ext. 5203

Email : hotel@sampranriverside.com

Website : www.sampranriverside.com

Submitted by : Sampran Riverside

The site is a recreational spot that applies sustainable tourism management techniques in accordance with the sufficiency economy concept. This place provides creative tourism services, which are designed to fit with modern times, but also retains the Thai identity and inherit the Thai lifestyles and wisdom that translated into various activities in the forms of handicraft, occupation, folk arts and recreation. These are appropriately illustrated through the activities of the Thai way of life, organic gardens, and Suk Chai Market. Facilities are fully available; such as riverside hotel, traditional Thai house by the lake, Arusaya Spa, etc.

Award of Outstanding Performance

Rattanakosin Exhibition Hall

100 Ratcha Damnoen Klang Avenue, Bawonniwet Sub-District

Phra Nakhon District, Bangkok 10200

Tel : 0 2621 0044 ต่อ 104

Fax : 0 2621 0043

E-mail : rtks2010@gmail.com

Website : www.nitasrattanakosin.com

Submitted by : Rightman Co., Ltd.

The buildings along the Ratcha Damnoen Avenue are parts of Bangkok's architectural landscape and history. Advanced technologies-such as presentation devices, models, four-dimensional multi-media technique, multi-touch and multi-media animation technologies- are used in presenting the exhibitions about Rattanakosin City through interactive self-learning devices. It also invites the public to learn, appreciate and take pride in Thailand's artistic and cultural legacies of the Rattanakosin Era. Award of Outstanding Performance

Sampran "Thai Life : Sufficiency Way of Life"



Rattanakosin Exhibition Hall





The Sirindhorn International Environmental Park



Chiang Mai Night Safari

Award of Outstanding Performance

The Sirindhorn International Environmental Park

1281 Rama VI Camp, Tambon Cha-am, Amphoe Cha-am, Phetchaburi 76120

Tel : 0 3250 8352, 0 3250 8379

Email : Siep@sirindhornpark.or.th

Website : www.sirindhornpark.or.th

Submitted by : The Sirindhorn International Environmental Park Foundation under the Patronage of Her Royal Highness Princess Maha Chakri Sirindhorn

The learning international park is remarkable for providing the knowledge of alternative energy, natural resources and environment, forest and wildlife sanctuary rehabilitation. The Park features a museum and exhibition presented in a two-way communication channel ; the natural classrooms, which include the routes of mangrove forest, beach forest, and mixed deciduous forest to follow the trail of the ecosystem that has been rehabilitated to be in abundance, a camp of energy and environmental conservation including accommodation service.

Northern Region

Award of Excellence

Chiang Mai Night Safari

33 Mu 12 Ratchaphruek Road, Tambon Nong Khwai

Amphoe Hang Dong, Chiang Mai 50230

Tel : 0 5399 9000

Fax : 0 5399 9099

Email : prcns2008@gmail.com

Website : www.chiangmainightsafari.com

Submitted by : Pinkanakorn Development Agency (Public Organisation)

The safari is an attraction for learning about wildlife from countries all over the world and creating natural conservation awareness. The place is open day and night. It provides tourists with activities to observe wildlife closely ; for instance, feeding animals, taking a tram ride to watch wildlife at night, enjoying a light and sound show, as well as large musical fountains. Safari resort style accommodation is available for tourists who prefer to stay overnight. There is also an animal life-learning course for children.

Award of Outstanding Performance

Dhanabadee Museum

32 Wat Chong Kham Road, Tambon Phra Bat

Amphoe Muang, Lampang 52000

Tel : 0 5435 4 011-2

Website : www.dhanabadee.com

Submitted by : Dhanabadee Decor Ceramic Co.,Ltd.

Dhanabadee Ceramic Museum is the legend of chicken bowl and ceramic of Lampang. The museum shows how the first Dhanabadee Group, was established, the original chicken bowl and the history of ceramics manufacturing in Lampang and Thailand and shopping factory outlet at The Muse Shop for Chicken bowl, ceramic home decorations and ceramic souvenir.



Dhanabadee Museum



Thai Elephant Home

Award of Outstanding Performance

Thai Elephant Home

102 Tambon Kuedchang, Amphoe Maetang, Chiang Mai 50150

Tel : 08 9434 2047, 08 1716 3980

Email : wanacharts@yahoo.com

Website : www.thaielephanthome.com

Submitted by : Thai Elephant Home

Thai Elephant Home is a place where humans can live with elephants closely; therefore, they can get to know more about elephants by learning to be mahouts. The activities start from friendly touching, learning the nature, ways of life, and habits of elephants, which begins from bathing them, preparing food for them, and training them to do several activities.



Roi-et science and cultural center



Sirindhorn Museum

Northeastern Region

Award of Excellence

Roi-et science and cultural center

32 Mu 2 Chaeng Sanit Road, Tambon Niwet

Amphoe Thawat Buri, Roi Et 45170

Tel : 0 4356 9340

Email : 101sciweb@gmail.com

Website : www.roietsci.com

Submitted by : Roi-et science and cultural center

At the Roi-et science and cultural centre, there are several activities to enhance the learning experience of science and local knowledge. Visitors can enjoy the wide range of exhibitions that include the science exhibition, the prehistoric world exhibition, the treasure of Tung Kula exhibition, and a unique Planetarium that is equipped with the most up to dated skyline in northeastern Thailand. There is also a youth science camp and other shopping areas nearby that provide quality goods at a reasonable price.

Award of Outstanding Performance

Sirindhorn Museum

200 Tambon Non Buri, Amphoe Sahatsakhan, Kalasin 46140

Tel : 0 4387 1014, 0 4387 1613, 0 4387 1615-6

Email : o_summart@hotmail.com

Website : www.sdm.dmr.go.th

Submitted by : Sirindhorn Museum

The museum is Southeast Asia's biggest and most complete research and conservation operational institution that collects fossil samples of dinosaurs and creatures in the same eras. The highlight of the museum is the dinosaur skeleton of the Phuwiangosaurus sirindhornae. The building is divided into several learning zones that provide information and knowledge to the visitors.



Khon Kaen Zoo



Sanctuary of truth, Philosophy, religion, goodness,
Thai Traditional arts and Sculptural Architecture

Award of Outstanding Performance

Khon Kaen Zoo

88 Mu 8, Tumbol Kham-muang, Amphoe Khao Suan Kwang, Khon Kaen 40280

Tel : 08 6459 4192

Email : prz535@gmail.com

Website : www.khonkaenzoo.com

Submitted by : Khon Kaen Zoo

Legend has it that in the past when you enter the forest in this area, you would find hundreds of deer here. Hence, this place is also known as the Deer Mountain which also reflects the large number of animals and is a highlight of the tourist attraction. Khon Kaen Zoo focuses on providing the knowledge about wildlife nature and the environment through varieties of media and methods for interested visitors. The zoo is divided into 4 sections : The study area such as the wildlife, nature and environment. The conservation and research for various rare animals area. The exhibition area is designed to be close to nature. Water park area is also another alternative recreation area for tourists.

Eastern Region

Award of Outstanding Performance

Sanctuary of Truth, Philosophy, Religion, Goodness,
Thai Traditional Arts and Sculptural Architecture

206/2 Mu 5 Pattaya-Na Kluea Road, Tambon Na Kluea

Amphoe Bang Lamung, Chon Buri 20150

Tel : 0 3836 7815, 08 4013 3321

Email human.prasatt@gmail.com

Website : www.sanctuaryoftruth.com

Submitted by : Muang Boran Co., Ltd. Pattaya Branch

The imaginary wooden construction reflects Oriental philosophy and Dhamma principles that can be applied in daily life. It has been constructed with the combination of arts from the early Ayutthaya to Rattanakosin periods, which features the prominent qualities of its unusualness, the magnificence of construction, and woodcarvings of several pieces. The wood used for this construction is hard wood that is capable of weighing thousands of tons. The main post is made of 600-year-old hopea odorata wood. The construction employs the old techniques of wood joints for connecting dowels, bolts, clefts, and dovetails without using nails.

Southern Region

Award of Outstanding Performance

Thai wisdom on Artificial Corals Fish's Home of Tong Tom Yai Homestay

31/2 Mu 1 Dan Sawi, Amphoe Sawi

Chumphon 86130

Tel : 08 1345 6743, 0 7753 8075

Website : www.facebook.com/tongtomyaihomestay

Submitted by : Mr.Watcharin Sawaengkarn (Tong Tom Yai Homestay)

It is a small community with a simple lifestyle. The common business here is the fishing which is also guided by the environmental conservative mindset. This idea started with the local people that gathered to conserve the environment, especially the sea. With the abundance of the nature and the lifestyle of the fishermen here, visitors can enjoy the wide range of activities here such as making the fish traps.

Award of Outstanding Performance

Nakhon Si Thammarat Science Centre for Education (Natural classroom)

Mu 3, Tambon Ban Ko, Amphoe Phrom Khiri

Nakhon Si Thammarat 80320

Tel : 0 7539 6363

Website : www.nakhonsci.com

Submitted by : Nakhon Si Thammarat Science Centre for Education

The site is a centre of learning experience that is abundant with natural resources, the environment, and topography, which supports in organising the scientific learning activities in various new forms of plays that are suitable for everyone. The centre is divided into 4 areas namely exhibition services, camp activities, educational activities and academic services. The goal of these activities is to emphasise on the creative science to lead to the development of the community and environment.



Thai wisdom on Artificial Corals Fish's Home
by Tong Tom Yai Homestay



Nakhon Si Thammarat Science Centre for Education
(Natural classroom)

Recreational Attractions for Entertainment



Tiffany's Show Pattaya

Nationwide

Award of Excellence

Tiffany's Show Pattaya

464 Mu 9, Pattaya 2nd Road, Nongprue, Banglamung, Chonburi 20260

Tel : 0 2842 1700-5, 09 3287 3455

Email : tiffany@tiffany-show.co.th

Website : www.tiffany-show.co.th

Submitted by : Tiffany's Show Pattaya Co., Ltd.

The Tiffany's Show Pattaya has an innovation of tourism product management that features transvestites as performers. The show patterns and technology presented in the show have continuously changed and the personnel management in the organisation is quite efficient; there is a career path along the working life, which has made the business grow continuously until the present.

Ripley's World Pattaya



Award of Outstanding Performance

Ripley's World Pattaya

218 Mu 10 Beach Road, Nongprue, Banglamung, Chonburi 20260

Tel : 0 3871 0294-8, 08 9443 1384

Email : pathommarat_yi@minor.com

Website : www.ripleysthailand.com, natwarun_me@minor.com

Submitted by : Minor International Public Company Limited

A recreational attraction that offers various forms of entertainment under the theme, "Things You Can't See Anywhere Else", Ripley's Believe It or Not!, Haunted Adventure, 4D Moving Theatre, Infinity Maze, Louis Tussaud's Waxworks, "Scream in the Dark!", Giant Balloon, and the Vault : Laser Maze Challenge that also gives players both knowledge and entertainment.



Siam Park City, Siam Park-Bangkok Sea

Award of Outstanding Performance

Siam Park City, Siam Park-Bangkok Sea

203 Suan Siam Road., Kannayao, Bangkok 10230

Tel : 0 2919 7200, 0 2105 4294, 09 0880 1071

Email : contactus@siamparkcity.com

Website : www.siamparkcity.com, tipjun@siamparkcity.com

Submitted by : Siam Park Bangkok Co., Ltd.

Siam Park-Bangkok Sea is a water park featuring Asia's largest and most perfect artificial sea. At present, machines of international standard have been installed and divided into zones according to their types and players. They can cater to people of all ages and genders; such as X-Zone, Fantasy World, Small World, etc. The services are provided at reasonable prices and with safety and services standards.



Flying Hanuman



Chulachomklao Royal Military Academy

Recreational Attractions for Adventure

Nationwide

Award of Excellence

Flying Hanuman

89/16 Wichit Songkhram Road, Tambon Kathu

Amphoe Kathu, Phuket 83120

Tel : 08 5141 3391

Email : kungnang@flyinghanuman.com

Website : www.flyinghanuman.com

Submitted by : Skytrek Adventures Co., Ltd.

Flying Hanuman follows the pattern of ecotourism adventure, where tourists can appreciate the panoramic view of nature and experience the excitement on a high level of a zip line activity with specialised equipment. There are also other 28 activities available here in the area of 50 rai. The safety of the visitors is the main concern here as there are experts and staffs here to provide guidance for tourists, the insurances are also available.

Award of Outstanding Performance

Chulachomklao Royal Military Academy

99 Suwannasorn Road, Tambon Phrommani

Amphoe Muang, Nakhon Nayok 26001

Tel : 037 393 185, 08 9999 1429

Email : Tourism_crma@hotmail.com

Website : www.tourismcrma.com

Submitted by : Tourism Office of Chulachomklao Royal Military Academy

This is a state-run attraction, featuring adventurous activities that are distinctive and different from other military attractions. Their activities are offered in the forms of learning stations such as leadership training station, team building station, etc. Every station is supervised by coaching soldiers to train and give information to participants.

Community-based Tourism Attractions

Central Plain

Award of Outstanding Performance

Nong Khao Community

Nong Khao Museum, U Thong-Kanchanaburi Road, Nong Khao

Amphoe Tha Muang, Kanchanaburi 71110

Tel : 06 3271 3893, 0 3458 6060, 08 1947 2047

Email : TATiya@windowslive.com

Submitted by : Nong Khao Community

The majority of the Nong Khao Community follows the traditional beliefs of the simple way of agricultural life. The basketry that is made with palm leaves and bamboo is a common product in this community. However, the featuring OTOP product here is the colourful loincloth that the Nong Khao locals are specialised here.

Award of Outstanding Performance

Baan Rim Klong Homestay Community Enterprise

43/1 Mu.6, Tambon Ban prok, Amphe Muang, Samutsongkram 75000

Tel : 08 9170 2904

Email : homestay_baanrimklong@hotmail.com

Website : www.baanrimklong.net

Submitted by : Baan Rim Klong Homestay Community Enterprise

The village is the community that admires the value of nature and riverside lifestyle; therefore, they decided to restore their local riverside identity. It is open to visitors to learn the community's activities in the form of folk wisdom knowledge bases : making of palm sugar, coconut leaf wickerwork, Thai desserts cooking and cruising to observe the community's way of life along both sides of the canal called Khlong Phi Lok, and antique traditional Thai houses, as well as traditional funeral ceremony. Visitors can also taste authentic Thai dishes; such as, fried mackerel with shrimp paste sauce, cooked vegetables, Cassia leaf curry, tamarind leaf curry, which are rare to find today.



Nong Khao Community



Baan Rim Klong Homestay Community Enterprise

Northeastern Region

Award of Outstanding Performance

Phrabat Huai Tom Tourism-based Community

Mu 8 Phrabat Huai Tom Road, Tambon Nasai

Amphoe Lee, Lampun 51110

Tel : 08 3324 3062

Submitted by : Phrabat Huai Tom Tourism-based Community

Phrabat Huai Tom Community is a community that lives a simple life and strongly believes in Buddhism. They are vegetarians. The main attractions in the community feature Wat Phrabat Huai Tom and Phra Maha That Chedi Si Wiang Chai, a stupa replicating the Shwedagon Pagoda in Myanmar. Visitors can learn the folk wisdom like dyeing natural colour fabric, fabric weaving with a backstrap loom, handmade silverware making with designs showing the tribe's livelihood, bladesmithing including learning Lanna architecture and the original way of the community's living.

Award of Outstanding Performance

Bo Suak, The Organisation of community-based Tourism Promotion

147 Mu10, Tambon Bor Suak, Amphoe Muang, Nan 55000

Tel : 08 1028 9051

Submitted by : Bo Suak, The Organisation of community-based Tourism Promotion

It is well known for its archaeological aspect, and local wisdom. There is a wide range of activities for the visitors to emerge in that include pottery making, silk weaving, basket making, molasses processing, as well as traditional performances. The community also emphasises on maintaining the natural resources, and the local way of life through the sustainable tourism.



Phrabat Huai Tom Tourism-based Community



Bor Suak community

Northeastern Region

Award of Outstanding Performance

Ku Ka Sing Community

Tambon Ku Ka Sing, Amphoe Kaset Wisai, Roi-Et 45150

Tel : 09 2525 0191

Email : auakha@gmail.com

Submitted by : Ku Ka Sing Community

This Khmer-style ancient religious area is situated in a present-day temple named Wat Burapha Ku Ka Sing in Tambon Ku Ka Sing. The community follows the traditional way of life where the visitors can learn through the 6 based-style activities that include Khmer ruins, silk weaving, sustainable agricultural garden, local wisdom museum, local literature, and traditional paper cutting style.



Ku Ka Sing Community



Ban Chiang Cultural Conservative Homestay Community

Award of Outstanding Performance

Ban Chiang Cultural Conservative Homestay Community

33 Mu 13 Ban Phiphitthaphan, Tambon Ban Chiang

Amphoe Nong Han, Udon Thani 41320

Tel : 08 1485 1864

Email : pk2pol@gmail.com

Submitted by : Ban Chiang Cultural Conservative Homestay Community

Ban Nong Khao CommunityBan Chiang Community is proud of their way of life and long history ; as such, the administration and working in collaboration were planned. The Community has communicated the meaning of the Thai Phuan cultural conservation and disseminated knowledge to tourists, in particular, the learning sources tour including providing homestay activities for tourists to learn the culture, traditions and lifestyle of the Thai Phuan ethnic minority.

Eastern Region

Award of Outstanding Performance

Reconcile the differences, Create the Unity,
Sustainable Tourism

42 Mu1, Tambon Nam Chiao, Laem Ngop, Trat 23120

Tel : 08 4892 5374

Email : kolma-3115@hotmail.com

Submitted by : The Nam Chiao community Enterprise

It is a community that combines the art and culture of Buddhism and Islam as the local people live in the harmony despite the differences within their own community. There is an establishment of the environmental conservation group that implements several activities that maintain the goodwill of the ancestors such as the way of Buddhist and Islamic life, fishing, coral diving and local cornflakes cooking.

Award of Outstanding Performance

Ban Talay Noi Tourism Village

4/1 Mu 6 Tambon Thangkwan, Amphoe Klaeng, Rayong 21110

Tel : 08 1864 9086

Submitted by : Head of Ban Talay Noi Tourism Village

Thale Noi Community follows the sufficiency economy concept as their way of life. The locals introduce their traditional cultural heritage to the tourists to generate incomes for their community through their sustainable tourism and local products. Here, visitors can enjoy the local way of life, traditions, and the wisdom of their community. In addition, the famous local OTOP product, the clotbur can also be found here.



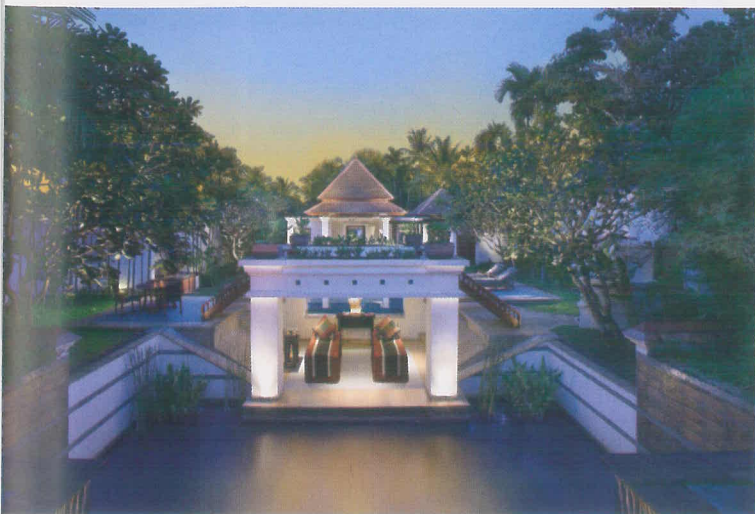
*Reconcile the differences, Create the Unity,
Sustainable Tourism*



Ban Talay Noi Tourism Village

Awards for Health Tourism

Health & Wellness Destination



Banyan Tree Spa Phuket



Wareerak Hot Spring Spa

Nationwide

Award of Excellence

Banyan Tree Spa Phuket

33 Si Sunthon Road, Tambon Choeng Thale

Amphoe Thalang, Phuket 83110

Tel : 0 7637 2400

Email : spa-phuket@banyantree.com

Website : www.banyantreespa.com

Submitted by : Banyan Tree Spa Phuket, Banyan Tree Spa Sanctuary

Banyan Tree Spa Phuket focuses its service on holistic treatment, which is a traditional science of the East. The spa highlight is to feel the massage by skillful and experienced masseurs, using natural herbs and spices. The service programmes are designed to respond to a variety of lifestyles and different spa lovers (Retreat for the Senses).

Award of Outstanding Performance

Wareerak Hot Spring Spa

18 Mu.7, Tambon Khlong Thom Nuea

Amphoe Khlong Thom, Krabi 81120

Tel : 0 7563 7130, 09 5464 3824

Email : reservation@vacationvillage.co.th,

Website : www.wareerak.com, wareerak@vacationvillage.co.th

Submitted by : Wareerak Hot Spring Spa

It is a natural hot spring spa situated amidst the natural surroundings by the bank of Khlong Thom in Krabi. It offers an impressive leisure experience, using natural mineral water in treatment and health promotion as hydrotherapy with exercise developed from the contorted-hermit exercise and Manora dance, a cultural heritage which is unique to the South.

Award of Outstanding Performance

Tao Garden Health Spa and Resort

274/1 Tambon Luang Nuea, Amphoe Doi Saket, Chiang Mai 50200

Tel : 0 5392 1200

Email : info@tao-garden.com

Website : www.tao-garden.com

Submitted by : Tao Garden Health Spa and Resort

It is a health spa that has won three consecutive Awards of Excellence : Destination Spa (Nationwide), in 2010, 2013, and 2015. This spa has the policy and practices to concentrate on management, health service, marketing activity promotion, environmentally-friendly operation, preservation of local culture and traditions, communal participation, and the balance in nature, which is in line with the concept of Taoism, a philosophy that emphasises the balance of nature, human beings, and the environment. Additionally, there are health promotion and rejuvenation programmes; such as spa, Thai massage, Thai traditional medicine, alternative medicine, and healthy food, as well as exercise programmes with advice by experts.

Hotel/Resort Spa

Central Region

Award of Excellence

Banyan Tree Spa Bangkok

21/100 South Sathorn Road, Thung Maha Mek, Sathorn, Bangkok 10120

Tel : 0 2679 1200

Email : spa-bangkok@banyantree.com

Website : www.banyantreespa.com

Submitted by : Banyan Tree Spa Bangkok, Banyan Tree Hotel Bangkok

Banyan Tree Spa Bangkok(Banyan Tree Hotel Bangkok), a beautifully designed spa in a serene atmosphere on a skyscraper in the heart of Bangkok. Its Asian-style treatment services are varied to help expel muscular stress. The Rainmist shower will return freshness and rehabilitate the body to the full effect with attention paid to every detail.



Tao Garden Health Spa and Resort



Banyan Tree Spa Bangkok

Award of Outstanding Performance

Mandara Spa

2 Charoen Krung Road Soi 30 (Captain Bush Lane)

Sipaya, Bang Rak, Bangkok 10500

Tel : 0 2266 0123

Email : ms_shro@minor.com

Website : www.mandaraspa.com

Submitted by : Mandara Spa, Royal Orchid Sheraton Hotel Bangkok

It is a spa that is situated on the classic hotels with a Chao Phraya river view in every room. There are also relaxing bathtubs and a big garden on the rooftop. In addition, the unique aeration baths, and wide ranges of spa programs are also available for selection that include Thai traditional, and Swedish spa.



Mandara Spa



The Barai

Award of Outstanding Performance

The Barai

91 Hua Hin-Khao Takiap Road, Tambon Nong Kae

Amphoe Hua Hin, Prachuap Khiri Khan 77110

Tel : 0 3252 1234

Email : thebarai.hrhuaHin@hyatt.com

Website : www.thebarai.com

Submitted by : The Barai, Hyatt Regency Hua Hin Hotel

The Barai uses the concept "travel of experience, emotion, and feeling under the lead of architectural beauty" toward a destination of relaxation and peace of mind while customers take services. The building is designed and decorated to be associated with nature, and conveys the travel of life, mind, and spirit. The treatment service is focused on improving the balance of the body's four elements including earth, air, fire and water, which is designed to match with the elements of each clients.

Northern Region

Award of Excellence

Rarinjinda Wellness Spa and Onsen Ching Mai

14 Charoenrat Road, Tambon Wat Ket, Amphoe Muang Chiang Mai 50000

Tel : 0 5324 7000, 0 5330 3030

Email : spa@rarinjinda.com

Website : www.rarinjinda.com

Submitted by : Rarinjinda Wellness Spa and Onsen Ching Mai

A relaxation spa that is focused on spa services to promote health. Clients will experience a spa for holistic health through the unique treatment programme, which is created from a combination of Eastern treatment; Thai wisdom-based massage, and Western innovation with up-to-date technology; hydrotherapy. The services are to treat body, mind, and spirit to be in a perfect balance, with advice from Ayurvedic experts.



Rarinjinda Wellness Spa and Onsen Ching Mai



Pan Viman Spa

Award of Outstanding Performance

Pan Viman Spa

197/2 Mu 1, Mae Rim-Samoeng Road, Tambon Pong Yaeng

Amphoe Mae Rim, Chiang Mai 50180

Tel : 0 5387 9494, 0 53879 5400

Email : spa_chiangmai@panviman.com

Website : www.panviman.com

Submitted by : Pan Viman Spa, Panviman Chiang Mai Resort

Pan Viman Spa (Pan Viman Chiang Mai Resort), a spa situated in the shady natural surroundings, focusing on its services in a private atmosphere for leisure and relaxation, with a Lanna-style welcome and standard spa service. The massage programmes are a combination of the Eastern (Thai Lanna) and the Western sciences, and the massage parlour has a scenic view of the hills. Furthermore, yoga and meditation practices are available for true happiness of body and mind.

Southern Region

Award of Excellence

Banyan Tree Spa Samui

99/9 Mu 4, Tambon Maret

Amphoe Ko Samui, Surat Thani 84310

Tel : 0 7791 5333

Email : spa-samui@banyantree.com

Website : www.banyantreespa.com

Submitted by : Banyan Tree Spa Samui, Banyan Tree Spa Samui Hotel

It is a spa in a tropical botanical garden atmosphere that is focused on holistic treatment as a traditional practice of the East. The highlight of the spa is the massage by skillful masseurs, mainly using natural herbs and spices. Moreover, it has a remarkable and unique innovation, the Rainforest Indulgence, which is a temperature therapy using different forms of currents.

Award of Outstanding Performance

Cool Spa

88 Mu 8 Sakdidej Road

Vichit, Muang, Phuket 83000

Tel : 0 7637 1000

Email : chill@sripanwa.com

Website : www.sripanwa.com

Submitted by : Cool Spa, Sri panwa Hotel

This is a realm of health and beauty where a full cycle of healing treatments for body and mind as well as the skin are offered. Products used for spa services have been carefully selected and prepared from locally available products; such as tamarind, mango, coconut, yoghurt, honey, etc. for customers to be pampered with natural body and skin products.



Banyan Tree Spa Samui



Cool Spa



Oasis Spa Bangkok (Sukhumvit Road Soi 31)



RarinJinda Wellness Spa (Ploenchit)

Day Spa

Central Region

Award of Excellence

Oasis Spa Bangkok (Sukhumvit Road Soi 31)

64 Sukhumvit Road Soi 31 (Soi Sawatdi), Watthana

Khlong Toei, Bangkok 10100

Tel : 0 2262 2122

Email : res@oasisspa.net

Website : www.oasisspa.net

Submitted by : Oasis Spa Bangkok (Sukhumvit Road Soi 31)

It is a health spa that is based on the concept of a garden villa spa. The Oasis spa-style treatment is unique and outstanding, mixing the treatment from the wisdom of Thai traditional medicine with Ayurvedic massage, and using the therapy with water, oil, and aroma. Clients are pampered mainly with Thai herbal products. Oasis Spa has developed its distinctive standards of services and management, particularly information technology, which is applied to the operation and control of its unified service standards.

Award of Outstanding Performance

RarinJinda Wellness Spa (Ploenchit)

100, 30th Floor, Grande Centre Point Hotel

Witthayu Road, Ploenchit, Lumpini, Patumwan, Bangkok 10330

Tel : 0 2651 5224-5

Website : www.rarinjinda.com

Submitted by : RarinJinda Wellness Spa (Ploenchit)

It is a spa that is situated on the rooftop of the hotel. With luxurious design mixed with Thai classic, the spa itself is decorated in a bright tone for pure relaxation. There are various of portions within the spa that also provide the peaceful space and unique treatments that is a mixture of the oriental and occidental therapies.

Award of Outstanding Performance

Divana Virtue Spa

10 Sri Wieng Road, Silom, Bangrak, Bangkok 10330

Tel : 0 2236 6788-9

Email : dv@divana-dvn.com

Website : www.divanaspa.com/VirtueSpa

Submitted by : Divana Virtue Spa

It is a spa that was renovated from the former residence of a nobleman. The spa is designed with a traditional architectural style situated in the heart of Bangkok. The treatment rooms are decorated with contemporary decor interspersed with Asian creative impressions and different kinds of wooden bathtubs. Like no others, the spa is an international standard with expert suggestions available to every customer.

Northern Region

Award of Excellence

Oasis Spa Lanna

4 Sam Lan Road, Tambon Phra Sing

Amphoe Muang, Chiang Mai 50200

Tel : 0 5392 0111

Email : res@oasisspa.net

Website : www.oasisspa.net

Submitted by : Oasis Spa Lanna

Oasis Spa Lanna a Lanna-style health spa with systematic and environmentally-friendly management. The wisdom of Thai traditional medicine is combined with Western spa treatment, using water, essential oil, and aromatic extracts from herbs (aromatherapy) to create the value and uniqueness of Oasis Spa. Moreover, massage programmes by individual request are offered to boost holistic health, both body and mind.



Divana Virtue Spa



Oasis Spa Lanna

Award of Outstanding Performance

Cheeva Spa

4/2 Hatsadisewi Road, Tambon Si Phum, Amphoe Muang, Chiang Mai 50200

Tel : 0 5340 5129, 0 5321 1400

Email : contact@cheevaspa.com

Website : www.cheevaspa.com

Submitted by : Cheeva Spa

It is an applied Lanna-style spa with an appropriate combination of sight, taste, smell, sound, and touch. Apart from health services, this spa takes the principle to spread and preserve the wisdom of the Thai Lanna-style treatment passed down from the ancestors and Lanna herbs. The techniques and herbs are brought to mix with a Western spa; for instance, massage, hammer massage, herbal compress, herbal oil massage, etc., which are on offer for rest and relaxation of body and mind.

Eastern Region

Award of Excellence

Oasis Spa Pattaya

322 Mu12, Chateau Dale, Thappaya Road

Amphoe Bang Lamung, Chonburi 20150

Tel : 0 3836 4070

Email : res@oasisspa.net

Website : www.oasisspa.net

Submitted by : Oasis Spa Pattaya

It is a spa surrounded by relaxing gardens that provides a treatment massage that is a mixed of oriental and occidental styles. Its distinguishing and unique signature treatment services feature a blend of traditional Thai medicines, hydrotherapy, oil and aroma therapies, which emphasise skin treatment using mainly Thai herbs.



Cheeva Spa



Oasis Spa Pattaya



Oasis Turquoise Cove Spa



Fah Lanna Spa

Southern Region

Award of Excellence

Oasis Turquoise Cove Spa

71/10 Mu 5 (Soi Phuket Fantasea) Kamala Beach

Amphoe Kathu, Phuket, 83150

Tel : : 0 7633 7777

Email : res@oasisspa.net

Website : www.oasisspa.net

Submitted by : Oasis Turquoise Cove Spa

It is a spa that is decorated with Moroccan style that emphasises on turquoise and white colours. There are 10 spa villas with relaxing bathtubs and outdoor rain showers available. The massage therapy style is also up to the standard of the Oasis.

Thai Wisdom Spa

Northern Region

Award of Excellence

Fah Lanna Spa

57/1 Wiang Kaew Road, Tambon Sripoom

Amphoe Muang, Chiang Mai 50200

Tel : 0 5341 6191

Email : email@fahlanna.com, fahlannaspa@gmail.com

Website : www.fahlanna.com

Submitted by : Fah Lanna Spa

It is an applied Lanna-style spa with an appropriate combination of sight, taste, smell, sound, and touch. Apart from health services, this spa takes the principle to spread and preserve the wisdom of the Fah Lanna Wisdom-style treatment passed down from the ancestors and Lanna herbs. The spa is also decorated with a Lanna style with additional services such as coffee, and souvenir shops are also available.

Award of Outstanding Performance

Zira Spa

8/1 Ratvithi Rd., Sripoom, Amphoe Muang, Chiang Mai 50200

Tel : 0 5322 2288

Email : zira.secret@gmail.com

Website : www.ziraspa.com

Submitted by : Zira Spa

Located on one of the main streets in the centre of Chiang Mai, Zira Spa is painted in white with the architectural design inspired by the Lanna and colonial styles. Zira Spa can accommodate any visitors from a couple to a big family. The treatments and services are provided by our specialists while the local herbs and mineral oils for the Lanna massage style are also available for the selection.



Zira Spa



Abhaibhubejhr Training Centre Day Spa

Eastern Region

Award of Excellence

Abhaibhubejhr Training Centre Day Spa

32/7 Mu 12 Prachin Nusorn Road, Tambon Thanym

Amphoe Muang, Prachinburi 25000

Tel : 0 3721 7127

Website : www.abhaiherb.com/node/6377

Submitted by : Abhaibhubejhr Training Centre Day Spa, Chao Phya Abhaibhubejhr Hospital

It is a spa treatment that perfectly combines Thai traditional knowledge and local wisdom with Western civilisation. The spa service is focused on the Abhaibhubejhr-style treatment to return the balance of body, mind, and spirit. Thai herbs and traditional medicine are applied and provided as spa services including Thai massage, aromatic oil massage based on the body's elements, postnatal care, and sauna. In addition, there are Thai wisdom herbal products for sale and healthy food (Spa Cuisine) that is suitable for each person's health.





