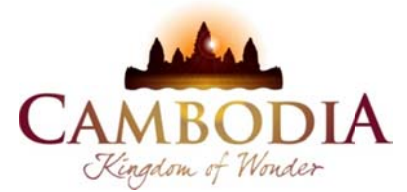




KINGDOM OF CAMBODIA
NATION RELIGION KING



TOURISM STATISTICS REPORT

April 2012

MINISTRY OF TOURISM

Statistics and Tourism Information Department

No. A3, Street 169, Sangkat Veal Vong, Khan 7 Makara, Phnom Penh, Cambodia.

Fax: +855 23 885003

E-mail: kong@mot.gov.kh

Web site: www.mot.gov.kh

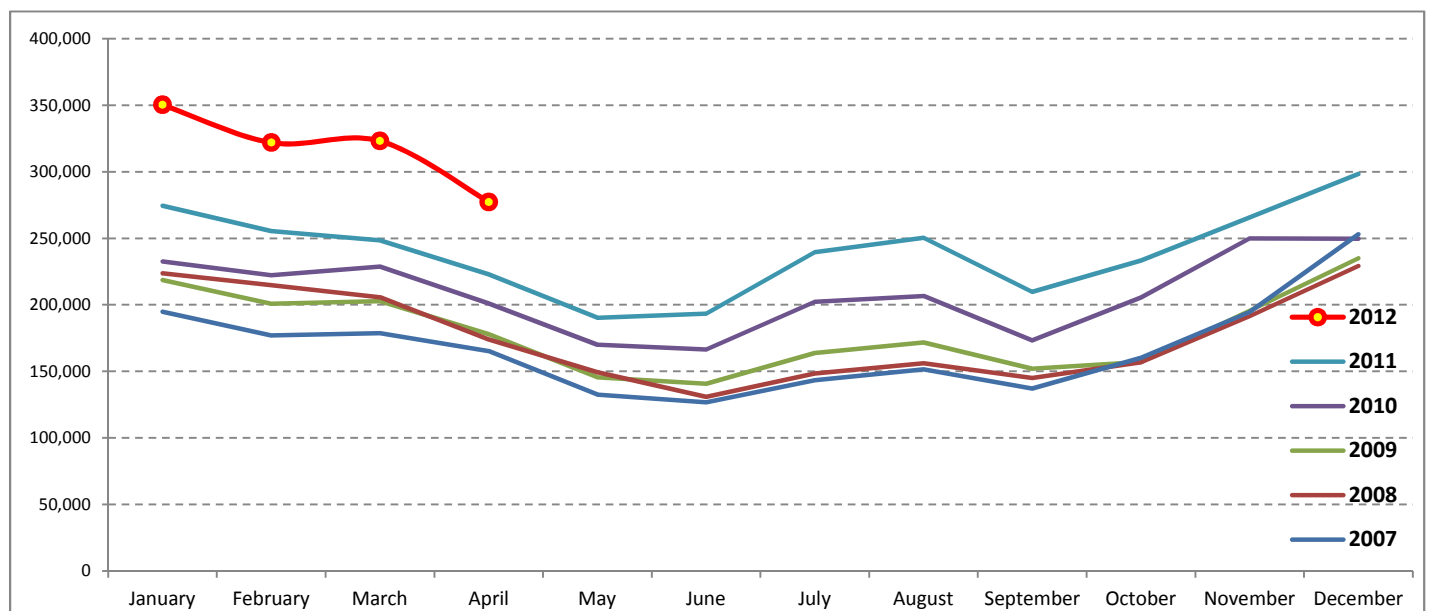
Tourism Highlights

International Tourist Arrivals, Average Length of Stay, Hotels Occupancy & Tourism Receipts 1993 - 2011

| Years | Tourist Arrivals | | Average Length | Hotels Occupancy | Tourism Receipts |
|-------|------------------|------------|----------------|------------------|------------------|
| | number | change (%) | of Stay (days) | (%) | (Million US\$) |
| 1993 | 118,183 | - | N/A | N/A | N/A |
| 1994 | 176,617 | 49.4 | N/A | N/A | N/A |
| 1995 | 219,680 | 24.4 | 8.00 | 37.00 | 100 |
| 1996 | 260,489 | 18.6 | 7.50 | 40.00 | 118 |
| 1997 | 218,843 | -16.0 | 6.40 | 30.00 | 103 |
| 1998 | 286,524 | 30.9 | 5.20 | 40.00 | 166 |
| 1999 | 367,743 | 28.3 | 5.50 | 44.00 | 190 |
| 2000 | 466,365 | 26.8 | 5.50 | 45.00 | 228 |
| 2001 | 604,919 | 29.7 | 5.50 | 48.00 | 304 |
| 2002 | 786,524 | 30.0 | 5.80 | 50.00 | 379 |
| 2003 | 701,014 | -10.9 | 5.50 | 50.00 | 347 |
| 2004 | 1,055,202 | 50.5 | 6.30 | 52.00 | 578 |
| 2005 | 1,421,615 | 34.7 | 6.30 | 52.00 | 832 |
| 2006 | 1,700,041 | 19.6 | 6.50 | 54.79 | 1,049 |
| 2007 | 2,015,128 | 18.5 | 6.50 | 54.79 | 1,400 |
| 2008 | 2,125,465 | 5.5 | 6.65 | 62.68 | 1,595 |
| 2009 | 2,161,577 | 1.7 | 6.45 | 63.57 | 1,561 |
| 2010 | 2,508,289 | 16.0 | 6.45 | 65.74 | 1,786 |
| 2011 | 2,881,862 | 14.9 | 6.50 | 66.15 | 1,912 |

International tourist arrivals to Cambodia

| Destination | Months | 2007 | 2008 | 2009 | 2010 | 2011 | 2012 | change (%) 2012*/11 |
|---|--------------|------------------|------------------|------------------|------------------|------------------|------------------|------------------------|
| Cambodia | Q1 | 550,813 | 644,205 | 622,288 | 683,692 | 778,467 | 995,210 | 27.8 |
| <i>International tourist arrivals by all means of transportations</i> | January | 194,932 | 223,581 | 218,691 | 232,590 | 274,471 | 350,257 | 27.6 |
| | February | 177,130 | 214,902 | 200,789 | 222,354 | 255,499 | 321,870 | 26.0 |
| | March | 178,751 | 205,722 | 202,808 | 228,748 | 248,497 | 323,083 | 30.0 |
| | Q2 | 424,536 | 454,031 | 464,230 | 537,464 | 606,562 | 277,304 | |
| | April | 165,347 | 173,903 | 177,955 | 200,965 | 223,032 | 277,304 | 24.3 |
| | May | 132,512 | 149,275 | 145,564 | 170,164 | 190,258 | | |
| | June | 126,677 | 130,853 | 140,711 | 166,335 | 193,272 | | |
| | Q3 | 431,815 | 449,693 | 487,422 | 582,024 | 699,760 | 0 | |
| | July | 143,310 | 148,449 | 163,817 | 202,349 | 239,527 | | |
| | August | 151,478 | 156,098 | 171,668 | 206,563 | 250,429 | | |
| | September | 137,027 | 145,146 | 151,937 | 173,112 | 209,804 | | |
| | Q4 | 607,964 | 577,536 | 587,637 | 705,109 | 797,073 | 0 | |
| | October | 160,235 | 156,718 | 157,105 | 205,515 | 233,190 | | |
| | November | 194,646 | 191,549 | 195,570 | 249,892 | 265,539 | | |
| | December | 253,083 | 229,269 | 234,962 | 249,702 | 298,344 | | |
| | Total | 2,015,128 | 2,125,465 | 2,161,577 | 2,508,289 | 2,881,862 | 1,272,514 | 27.1 |



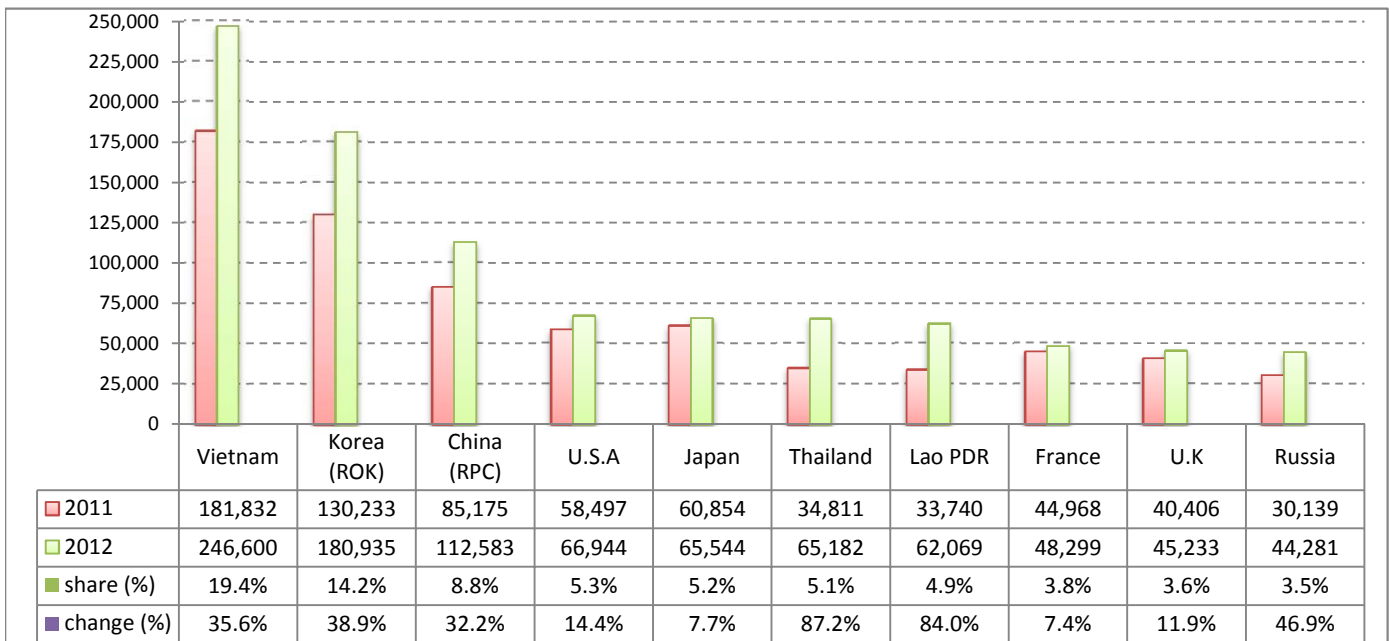
Executive Summary Report in the First Four Months 2012

I. International tourist arrivals to Cambodia in January - April 2012 was: **1,272,514**

II. Mode of arrivals

| | visitors | share (%) |
|----------------------------|------------------|--------------|
| Air | 640,038 | 50.3 |
| Phnom Penh Int'l Airport | 241,291 | 19.0 |
| Siem Reap Int'l Airport | 398,747 | 31.3 |
| Land and Water ways | 632,476 | 49.7 |
| Land | 592,745 | 46.6 |
| Waterway | 39,731 | 3.1 |
| Total | 1,272,514 | 100.0 |

III. Top ten markets arrivals in January - April 2012



IV. International tourist arrivals to Cambodia in January - April 2012

| | Inbound | | share (%) | | change (%) |
|----------------------------|------------------|------------------|--------------|--------------|-------------|
| | 2011 | 2012 | 2011 | 2012 | 2012*/11 |
| Air | 534,094 | 640,038 | 53.3 | 50.3 | 19.8 |
| Phnom Penh Int'l Airport | 220,036 | 241,291 | 22.0 | 19.0 | 9.7 |
| Siem Reap Int'l Airport | 314,058 | 398,747 | 31.4 | 31.3 | 27.0 |
| Land and Water ways | 467,405 | 632,476 | 46.7 | 49.7 | 35.3 |
| Land | 434,232 | 592,745 | 43.4 | 46.6 | 36.5 |
| Waterway | 33,173 | 39,731 | 3.3 | 3.1 | 19.8 |
| Total | 1,001,499 | 1,272,514 | 100.0 | 100.0 | 27.1 |

V. Remark: Percentage share of international tourist arrivals at destinations in January - April 2012

| | Arrivals | | share (%) | | change (%) |
|---------------------------------|------------------|------------------|--------------|--------------|-------------|
| | 2011 | 2012 | 2011 | 2012 | 2012*/11 |
| Phnom Penh & Other Destinations | 435,574 | 452,862 | 43.5 | 35.6 | 4.0 |
| Siem Reap Province | 565,925 | 819,652 | 56.5 | 64.4 | 44.8 |
| Total | 1,001,499 | 1,272,514 | 100.0 | 100.0 | 27.1 |

VI. Outbound tourists departures in January - April 2012

| | Outbound | | change (%) |
|---------------------------------|----------|-----------|------------|
| | 2011 | 2012 | 2012*/11 |
| Cambodian outbound tourists | 189,455 | 259,005 | 36.7 |
| International outbound tourists | 998,884 | 1,262,496 | 26.4 |

International Tourist Arrivals to Cambodia by Country of Residence in January - April 2012

(by all mean of transportations)

| Regions Country of Residence | 2011 | | 2012 | | | share | | change | |
|---------------------------------|------------------|------------------|------------------|---------------|------------------|----------------|--------------|-------------|----------|
| | | | Purpose of Visit | | | Total | Female | 2012* | 2012*/11 |
| | | | Holiday | Business | Other | | | | |
| GRAND TOTAL | 1,001,499 | 1,175,577 | 53,027 | 43,910 | 1,272,514 | 585,931 | 100.0 | 27.1 | |
| Asia and the Pacific | 687,736 | 849,768 | 41,672 | 24,793 | 916,233 | 431,196 | 72.0 | 33.2 | |
| ASEAN | 320,243 | 435,712 | 11,168 | 15,761 | 462,641 | 217,279 | 36.4 | 44.5 | |
| Brunei Darussalam | 125 | 258 | 4 | 74 | 336 | 131 | 0.0 | 168.8 | |
| Indonesia | 4,909 | 5,047 | 713 | 153 | 5,913 | 1,988 | 0.5 | 20.5 | |
| Lao PDR | 33,740 | 61,870 | 24 | 175 | 62,069 | 42,704 | 4.9 | 84.0 | |
| Malaysia | 30,152 | 32,206 | 2,250 | 247 | 34,703 | 12,005 | 2.7 | 15.1 | |
| Myanmar | 1,726 | 1,604 | 209 | 73 | 1,886 | 852 | 0.1 | 9.3 | |
| Philippines | 20,091 | 29,107 | 2,149 | 383 | 31,639 | 19,171 | 2.5 | 57.5 | |
| Singapore | 12,857 | 13,583 | 627 | 103 | 14,313 | 4,959 | 1.1 | 11.3 | |
| Thailand | 34,811 | 59,069 | 2,996 | 3,117 | 65,182 | 32,036 | 5.1 | 87.2 | |
| Vietnam | 181,832 | 232,968 | 2,196 | 11,436 | 246,600 | 103,433 | 19.4 | 35.6 | |
| Eastern Asia | 314,105 | 363,146 | 26,973 | 3,819 | 393,938 | 188,865 | 31.0 | 25.4 | |
| China (RPC) | 85,175 | 95,314 | 16,150 | 1,119 | 112,583 | 52,442 | 8.8 | 32.2 | |
| Hong Kong SAR | 1,731 | 2,534 | 76 | 16 | 2,626 | 1,263 | 0.2 | 51.7 | |
| Japan | 60,854 | 62,267 | 2,393 | 884 | 65,544 | 29,365 | 5.2 | 7.7 | |
| Korea (ROK) | 130,233 | 175,131 | 4,688 | 1,116 | 180,935 | 91,546 | 14.2 | 38.9 | |
| Mongolia | 91 | 119 | 9 | 19 | 147 | 79 | 0.0 | 61.5 | |
| Taiwan, China | 36,021 | 27,781 | 3,657 | 665 | 32,103 | 14,170 | 2.5 | -10.9 | |
| Southern Asia | 6,206 | 6,112 | 981 | 327 | 7,420 | 2,079 | 0.6 | 19.6 | |
| Afghanistan | 70 | 43 | 3 | 13 | 59 | 8 | 0.0 | -15.7 | |
| Bangladesh | 371 | 277 | 64 | 41 | 382 | 55 | 0.0 | 3.0 | |
| Bhutan | 34 | 33 | 0 | 9 | 42 | 9 | 0.0 | 23.5 | |
| India | 4,712 | 4,935 | 649 | 186 | 5,770 | 1,747 | 0.5 | 22.5 | |
| Nepal | 339 | 302 | 46 | 26 | 374 | 105 | 0.0 | 10.3 | |
| Pakistan | 358 | 218 | 117 | 29 | 364 | 58 | 0.0 | 1.7 | |
| Srilanka | 322 | 304 | 102 | 23 | 429 | 97 | 0.0 | 33.2 | |
| Western Asia | 866 | 984 | 53 | 5 | 1,042 | 576 | 0.1 | 20.3 | |
| Kazakhstan | 632 | 793 | 38 | 4 | 835 | 441 | 0.1 | 32.1 | |
| Uzbekistan | 234 | 191 | 15 | 1 | 207 | 135 | 0.0 | -11.5 | |
| Oceania | 42,449 | 42,314 | 2,134 | 4,571 | 49,019 | 21,668 | 3.9 | 15.5 | |
| Australia | 37,198 | 37,192 | 1,752 | 3,900 | 42,844 | 19,135 | 3.4 | 15.2 | |
| Fiji | 56 | 29 | 5 | 2 | 36 | 8 | 0.0 | -35.7 | |
| New Zealand | 5,195 | 5,093 | 377 | 669 | 6,139 | 2,525 | 0.5 | 18.2 | |
| Other Asia & the Pacific | 3,867 | 1,500 | 363 | 310 | 2,173 | 729 | 0.2 | -43.8 | |
| Europe | 223,109 | 238,471 | 7,243 | 7,067 | 252,781 | 109,856 | 19.9 | 13.3 | |
| Northern Europe | 62,463 | 64,758 | 2,303 | 876 | 67,937 | 26,386 | 5.3 | 8.8 | |
| Denmark | 4,340 | 4,210 | 116 | 48 | 4,374 | 1,765 | 0.3 | 0.8 | |
| Finland | 3,313 | 2,795 | 101 | 79 | 2,975 | 1,104 | 0.2 | -10.2 | |
| Iceland | 127 | 188 | 3 | 1 | 192 | 73 | 0.0 | 51.2 | |
| Ireland | 2,679 | 2,742 | 121 | 55 | 2,918 | 1,083 | 0.2 | 8.9 | |
| Norway | 4,079 | 3,877 | 84 | 40 | 4,001 | 1,668 | 0.3 | -1.9 | |
| Sweden | 7,519 | 7,955 | 187 | 102 | 8,244 | 3,201 | 0.6 | 9.6 | |
| United Kingdom | 40,406 | 42,991 | 1,691 | 551 | 45,233 | 17,492 | 3.6 | 11.9 | |
| Western Europe | 99,690 | 98,181 | 3,543 | 5,540 | 107,264 | 45,738 | 8.4 | 7.6 | |
| Austria | 3,526 | 3,768 | 72 | 108 | 3,948 | 1,573 | 0.3 | 12.0 | |
| Belgium | 5,181 | 5,215 | 211 | 185 | 5,611 | 2,239 | 0.4 | 8.3 | |
| France | 44,968 | 41,748 | 2,140 | 4,411 | 48,299 | 20,961 | 3.8 | 7.4 | |
| Germany | 29,832 | 31,192 | 602 | 429 | 32,223 | 13,280 | 2.5 | 8.0 | |
| Luxembourg | 221 | 176 | 2 | 4 | 182 | 77 | 0.0 | -17.6 | |
| Monaco | 17 | 18 | 0 | 0 | 18 | 10 | 0.0 | 5.9 | |
| Netherlands | 8,372 | 8,544 | 260 | 144 | 8,948 | 3,633 | 0.7 | 6.9 | |
| Switzerland | 7,573 | 7,520 | 256 | 259 | 8,035 | 3,965 | 0.6 | 6.1 | |
| Eastern Europe | 41,264 | 55,835 | 539 | 131 | 56,505 | 29,008 | 4.4 | 36.9 | |
| Bulgaria | 187 | 260 | 6 | 0 | 266 | 144 | 0.0 | 42.2 | |
| Czech Republic | 1,582 | 2,035 | 32 | 10 | 2,077 | 875 | 0.2 | 31.3 | |
| Estonia | 517 | 433 | 6 | 4 | 443 | 199 | 0.0 | -14.3 | |
| Hungary | 1,423 | 1,244 | 18 | 5 | 1,267 | 530 | 0.1 | -11.0 | |
| Lithuania | 864 | 516 | 7 | 1 | 524 | 289 | 0.0 | -39.4 | |
| Poland | 3,817 | 4,229 | 22 | 24 | 4,275 | 2,096 | 0.3 | 12.0 | |
| Romania | 423 | 465 | 17 | 5 | 487 | 281 | 0.0 | 15.1 | |
| Russian Federation | 30,139 | 43,849 | 366 | 66 | 44,281 | 23,210 | 3.5 | 46.9 | |
| Slovakia | 587 | 717 | 33 | 11 | 761 | 302 | 0.1 | 29.6 | |
| Ukraine | 1,725 | 2,087 | 32 | 5 | 2,124 | 1,082 | 0.2 | 23.1 | |

International Tourist Arrivals to Cambodia by Country of Residence in January - April 2012

(by all mean of transportations)

| Regions Country of Residence | 2011 | | 2012 | | | share | | change | |
|---------------------------------|------------------|------------------|------------------|---------------|------------------|----------------|--------------|--------------|----------|
| | | | Purpose of Visit | | | Total | Female | (%) | (%) |
| | | | Holiday | Business | Other | | | 2012* | 2012*/11 |
| GRAND TOTAL | 1,001,499 | 1,175,577 | 53,027 | 43,910 | 1,272,514 | 585,931 | 100.0 | 27.1 | |
| Southern Europe | 16,156 | 18,408 | 459 | 305 | 19,172 | 7,916 | 1.5 | 18.7 | |
| Croatia | 214 | 273 | 7 | 1 | 281 | 138 | 0.0 | 31.3 | |
| Greece | 535 | 394 | 5 | 4 | 403 | 133 | 0.0 | -24.7 | |
| Italy | 8,441 | 8,365 | 228 | 99 | 8,692 | 3,267 | 0.7 | 3.0 | |
| Portugal | 1,015 | 921 | 22 | 12 | 955 | 415 | 0.1 | -5.9 | |
| Serbia | 191 | 142 | 13 | 2 | 157 | 74 | 0.0 | -17.8 | |
| Slovenia | 341 | 454 | 11 | 2 | 467 | 193 | 0.0 | 37.0 | |
| Spain | 4,134 | 6,787 | 120 | 133 | 7,040 | 3,364 | 0.6 | 70.3 | |
| Turkey | 1,285 | 1,072 | 53 | 52 | 1,177 | 332 | 0.1 | -8.4 | |
| Other Europe | 3,536 | 1,289 | 399 | 215 | 1,903 | 808 | 0.1 | -46.2 | |
| Americas | 84,951 | 81,567 | 3,780 | 11,920 | 97,267 | 42,510 | 7.6 | 14.5 | |
| Argentina | 1,641 | 2,461 | 16 | 57 | 2,534 | 1,250 | 0.2 | 54.4 | |
| Brazil | 1,395 | 2,160 | 16 | 27 | 2,203 | 1,064 | 0.2 | 57.9 | |
| Canada | 18,219 | 18,699 | 733 | 1,588 | 21,020 | 9,197 | 1.7 | 15.4 | |
| Chile | 1,116 | 1,315 | 3 | 4 | 1,322 | 667 | 0.1 | 18.5 | |
| Colombia | 1,223 | 401 | 6 | 15 | 422 | 218 | 0.0 | -65.5 | |
| Costa Rica | 102 | 113 | 3 | 2 | 118 | 62 | 0.0 | 15.7 | |
| Ecuador | 54 | 34 | 0 | 7 | 41 | 23 | 0.0 | -24.1 | |
| Mexico | 1,010 | 1,187 | 21 | 15 | 1,223 | 600 | 0.1 | 21.1 | |
| Peru | 168 | 193 | 7 | 2 | 202 | 76 | 0.0 | 20.2 | |
| United States | 58,497 | 54,064 | 2,837 | 10,043 | 66,944 | 28,793 | 5.3 | 14.4 | |
| Uruguay | 119 | 93 | 0 | 16 | 109 | 47 | 0.0 | -8.4 | |
| Other Americas | 1,407 | 847 | 138 | 144 | 1,129 | 513 | 0.1 | -19.8 | |
| Africa | 2,094 | 1,493 | 206 | 77 | 1,776 | 713 | 0.1 | -15.2 | |
| Cameroon | 140 | 76 | 2 | 5 | 83 | 19 | 0.0 | -40.7 | |
| Congo | 47 | 19 | 0 | 4 | 23 | 3 | 0.0 | -51.1 | |
| Ghana | 173 | 59 | 6 | 2 | 67 | 5 | 0.0 | -61.3 | |
| Kenya | 86 | 60 | 9 | 13 | 82 | 35 | 0.0 | -4.7 | |
| Liberia | 167 | 43 | 0 | 0 | 43 | 7 | 0.0 | -74.3 | |
| Nigeria | 198 | 100 | 91 | 14 | 205 | 34 | 0.0 | 3.5 | |
| Sudan | 7 | 15 | 3 | 2 | 20 | 5 | 0.0 | 185.7 | |
| South Africa | 1,017 | 997 | 73 | 12 | 1,082 | 540 | 0.1 | 6.4 | |
| Uganda | 102 | 16 | 0 | 6 | 22 | 9 | 0.0 | -78.4 | |
| Other Africa | 157 | 108 | 22 | 19 | 149 | 56 | 0.0 | -5.1 | |
| Middle East | 3,609 | 4,278 | 126 | 53 | 4,457 | 1,656 | 0.4 | 23.5 | |
| Egypt | 43 | 51 | 5 | 8 | 64 | 12 | 0.0 | 48.8 | |
| Iran | 270 | 222 | 2 | 4 | 228 | 69 | 0.0 | -15.6 | |
| Iraq | 14 | 29 | 1 | 1 | 31 | 7 | 0.0 | 121.4 | |
| Israel | 2,839 | 3,480 | 90 | 18 | 3,588 | 1,488 | 0.3 | 26.4 | |
| Kuwait | 144 | 190 | 0 | 1 | 191 | 8 | 0.0 | 32.6 | |
| Oman | 36 | 34 | 0 | 4 | 38 | 2 | 0.0 | 5.6 | |
| Palestine | 15 | 10 | 0 | 0 | 10 | 2 | 0.0 | -33.3 | |
| Qatar | 33 | 39 | 0 | 0 | 39 | 22 | 0.0 | 18.2 | |
| Saudi Arabia | 24 | 27 | 2 | 2 | 31 | 3 | 0.0 | 29.2 | |
| United Arab Emirates | 42 | 74 | 0 | 0 | 74 | 2 | 0.0 | 76.2 | |
| Yemen | 37 | 31 | 2 | 1 | 34 | 4 | 0.0 | -8.1 | |
| Other Middle East | 112 | 91 | 24 | 14 | 129 | 37 | 0.0 | 15.2 | |

Remark:

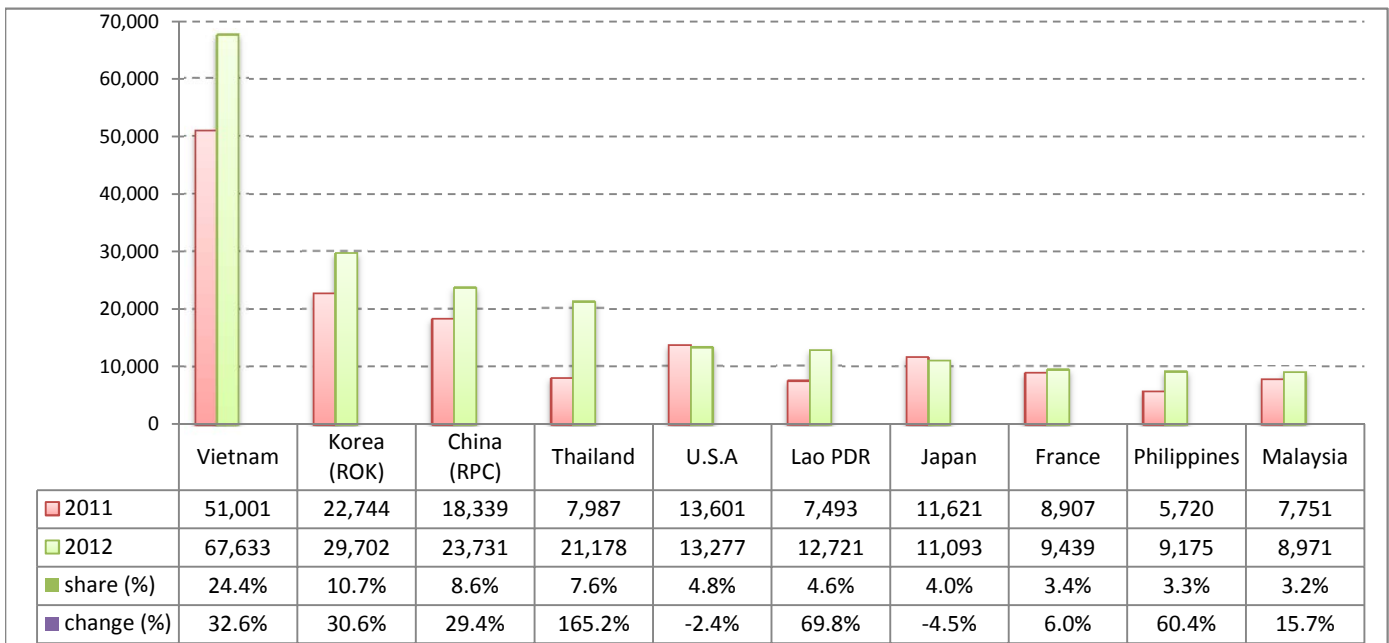
- Cambodian outbound tourist departures: 259,005
 - International outbound tourist departures: 1,262,496

I. International tourist arrivals to Cambodia in April 2012 was: **277,304**

II. Mode of arrivals

| | visitors | share (%) |
|----------------------------|----------------|--------------|
| Air | 126,282 | 45.5 |
| Phnom Penh Int'l Airport | 53,883 | 19.4 |
| Siem Reap Int'l Airport | 72,399 | 26.1 |
| Land and Water ways | 151,022 | 54.5 |
| Land | 147,325 | 53.1 |
| Waterway | 3,697 | 1.3 |
| Total | 277,304 | 100.0 |

III. Top ten markets arrivals in April 2012



IV. International tourist arrivals to Cambodia in April 2012

| | Inbound | | share (%) | | change (%) |
|----------------------------|----------------|----------------|--------------|--------------|-------------|
| | 2011 | 2012 | 2011 | 2012 | 2012*/11 |
| Air | 106,665 | 126,282 | 47.8 | 45.5 | 18.4 |
| Phnom Penh Int'l Airport | 49,478 | 53,883 | 22.2 | 19.4 | 8.9 |
| Siem Reap Int'l Airport | 57,187 | 72,399 | 25.6 | 26.1 | 26.6 |
| Land and Water ways | 116,367 | 151,022 | 52.2 | 54.5 | 29.8 |
| Land | 108,624 | 147,325 | 48.7 | 53.1 | 35.6 |
| Waterway | 7,743 | 3,697 | 3.5 | 1.3 | -52.3 |
| Total | 223,032 | 277,304 | 100.0 | 100.0 | 24.3 |

V. Remark: Percentage share of international tourist arrivals at destinations in April 2012

| | Arrivals | | share (%) | | change (%) |
|---------------------------------|----------------|----------------|--------------|--------------|-------------|
| | 2011 | 2012 | 2011 | 2012 | 2012*/11 |
| Phnom Penh & Other Destinations | 93,079 | 97,526 | 41.7 | 35.2 | 4.8 |
| Siem Reap Province | 129,953 | 179,778 | 58.3 | 64.8 | 38.3 |
| Total | 223,032 | 277,304 | 100.0 | 100.0 | 24.3 |

VI. Outbound tourists departures in April 2012

| | Outbound | | change (%) |
|---------------------------------|----------|---------|------------|
| | 2011 | 2012 | 2012*/11 |
| Cambodian outbound tourists | 52,138 | 70,738 | 35.7 |
| International outbound tourists | 215,957 | 275,739 | 27.7 |

International Tourist Arrivals to Cambodia by Country of Residence in April 2012

(by all mean of transportations)

| Regions Country of Residence | 2011 | 2012 | | | Total | Female | share | change |
|---------------------------------|----------------|------------------|---------------|---------------|----------------|----------------|--------------|-------------|
| | | Purpose of Visit | | | | | (%) | (%) |
| | | Holiday | Business | Other | | | 2012* | 2012*/11 |
| GRAND TOTAL | 223,032 | 249,620 | 15,176 | 12,508 | 277,304 | 124,451 | 100.0 | 24.3 |
| Asia and the Pacific | 160,638 | 194,293 | 12,090 | 5,655 | 212,038 | 97,565 | 76.5 | 32.0 |
| ASEAN | 84,834 | 119,670 | 3,344 | 2,378 | 125,392 | 59,167 | 45.2 | 47.8 |
| Brunei Darussalam | 40 | 40 | 1 | 7 | 48 | 20 | 0.0 | 20.0 |
| Indonesia | 1,272 | 1,337 | 207 | 49 | 1,593 | 497 | 0.6 | 25.2 |
| Lao PDR | 7,493 | 12,683 | 6 | 32 | 12,721 | 9,129 | 4.6 | 69.8 |
| Malaysia | 7,751 | 8,251 | 621 | 99 | 8,971 | 3,154 | 3.2 | 15.7 |
| Myanmar | 669 | 536 | 71 | 18 | 625 | 308 | 0.2 | -6.6 |
| Philippines | 5,720 | 8,262 | 808 | 105 | 9,175 | 5,343 | 3.3 | 60.4 |
| Singapore | 2,901 | 3,210 | 205 | 33 | 3,448 | 1,046 | 1.2 | 18.9 |
| Thailand | 7,987 | 19,023 | 841 | 1,314 | 21,178 | 14,382 | 7.6 | 165.2 |
| Vietnam | 51,001 | 66,328 | 584 | 721 | 67,633 | 25,288 | 24.4 | 32.6 |
| Eastern Asia | 62,042 | 64,218 | 7,751 | 1,347 | 73,316 | 33,064 | 26.4 | 18.2 |
| China (RPC) | 18,339 | 18,840 | 4,577 | 314 | 23,731 | 10,172 | 8.6 | 29.4 |
| Hong Kong SAR | 436 | 869 | 18 | 6 | 893 | 441 | 0.3 | 104.8 |
| Japan | 11,621 | 10,235 | 605 | 253 | 11,093 | 4,495 | 4.0 | -4.5 |
| Korea (ROK) | 22,744 | 27,809 | 1,504 | 389 | 29,702 | 14,569 | 10.7 | 30.6 |
| Mongolia | 17 | 15 | 4 | 0 | 19 | 13 | 0.0 | 11.8 |
| Taiwan, China | 8,885 | 6,450 | 1,043 | 385 | 7,878 | 3,374 | 2.8 | -11.3 |
| Southern Asia | 1,480 | 1,584 | 263 | 92 | 1,939 | 540 | 0.7 | 31.0 |
| Afghanistan | 1 | 9 | 0 | 0 | 9 | 0 | 0.0 | 800.0 |
| Bangladesh | 87 | 46 | 20 | 12 | 78 | 16 | 0.0 | -10.3 |
| Bhutan | 6 | 5 | 0 | 1 | 6 | 0 | 0.0 | 0.0 |
| India | 1,130 | 1,323 | 174 | 65 | 1,562 | 456 | 0.6 | 38.2 |
| Nepal | 73 | 67 | 22 | 7 | 96 | 25 | 0.0 | 31.5 |
| Pakistan | 96 | 49 | 19 | 5 | 73 | 8 | 0.0 | -24.0 |
| Sri Lanka | 87 | 85 | 28 | 2 | 115 | 35 | 0.0 | 32.2 |
| Western Asia | 141 | 134 | 16 | 1 | 151 | 86 | 0.1 | 7.1 |
| Kazakhstan | 68 | 82 | 13 | 1 | 96 | 48 | 0.0 | 41.2 |
| Uzbekistan | 73 | 52 | 3 | 0 | 55 | 38 | 0.0 | -24.7 |
| Oceania | 10,213 | 8,163 | 569 | 1,762 | 10,494 | 4,411 | 3.8 | 2.8 |
| Australia | 8,705 | 6,963 | 489 | 1,464 | 8,916 | 3,769 | 3.2 | 2.4 |
| Fiji | 18 | 3 | 1 | 2 | 6 | 1 | 0.0 | -66.7 |
| New Zealand | 1,490 | 1,197 | 79 | 296 | 1,572 | 641 | 0.6 | 5.5 |
| Other Asia & the Pacific | 1,928 | 524 | 147 | 75 | 746 | 297 | 0.3 | -61.3 |
| Europe | 42,437 | 40,955 | 1,941 | 2,425 | 45,321 | 19,142 | 16.3 | 6.8 |
| Northern Europe | 12,108 | 10,887 | 576 | 258 | 11,721 | 4,194 | 4.2 | -3.2 |
| Denmark | 746 | 604 | 27 | 15 | 646 | 252 | 0.2 | -13.4 |
| Finland | 462 | 387 | 22 | 33 | 442 | 138 | 0.2 | -4.3 |
| Iceland | 22 | 59 | 0 | 0 | 59 | 27 | 0.0 | 168.2 |
| Ireland | 586 | 527 | 41 | 16 | 584 | 215 | 0.2 | -0.3 |
| Norway | 679 | 634 | 21 | 14 | 669 | 257 | 0.2 | -1.5 |
| Sweden | 1,182 | 1,014 | 49 | 31 | 1,094 | 425 | 0.4 | -7.4 |
| United Kingdom | 8,431 | 7,662 | 416 | 149 | 8,227 | 2,880 | 3.0 | -2.4 |
| Western Europe | 18,646 | 16,267 | 929 | 1,940 | 19,136 | 7,778 | 6.9 | 2.6 |
| Austria | 545 | 481 | 18 | 56 | 555 | 215 | 0.2 | 1.8 |
| Belgium | 1,146 | 989 | 49 | 51 | 1,089 | 435 | 0.4 | -5.0 |
| France | 8,907 | 7,284 | 604 | 1,551 | 9,439 | 3,893 | 3.4 | 6.0 |
| Germany | 5,175 | 5,059 | 133 | 136 | 5,328 | 2,168 | 1.9 | 3.0 |
| Luxembourg | 50 | 45 | 0 | 0 | 45 | 19 | 0.0 | -10.0 |
| Monaco | 8 | 8 | 0 | 0 | 8 | 4 | 0.0 | 0.0 |
| Netherlands | 1,506 | 1,285 | 66 | 45 | 1,396 | 547 | 0.5 | -7.3 |
| Switzerland | 1,309 | 1,116 | 59 | 101 | 1,276 | 497 | 0.5 | -2.5 |
| Eastern Europe | 7,004 | 8,952 | 115 | 31 | 9,098 | 4,780 | 3.3 | 29.9 |
| Bulgaria | 41 | 47 | 4 | 0 | 51 | 26 | 0.0 | 24.4 |
| Czech Republic | 311 | 312 | 8 | 2 | 322 | 146 | 0.1 | 3.5 |
| Estonia | 63 | 33 | 1 | 0 | 34 | 20 | 0.0 | -46.0 |
| Hungary | 162 | 92 | 2 | 1 | 95 | 36 | 0.0 | -41.4 |
| Lithuania | 95 | 61 | 0 | 1 | 62 | 31 | 0.0 | -34.7 |
| Poland | 574 | 798 | 4 | 6 | 808 | 374 | 0.3 | 40.8 |
| Romania | 78 | 70 | 4 | 0 | 74 | 30 | 0.0 | -5.1 |
| Russian Federation | 5,316 | 7,065 | 78 | 15 | 7,158 | 3,891 | 2.6 | 34.7 |
| Slovakia | 117 | 174 | 6 | 5 | 185 | 66 | 0.1 | 58.1 |
| Ukraine | 247 | 300 | 8 | 1 | 309 | 160 | 0.1 | 25.1 |

Source: Statistics and ICT Department, MOT

International Tourist Arrivals to Cambodia by Country of Residence in April 2012

(by all mean of transportations)

| Regions Country of Residence | 2011 | | 2012 | | | share | | change | |
|---------------------------------|----------------|----------------|------------------|---------------|----------------|----------------|--------------|--------------|----------|
| | | | Purpose of Visit | | | Total | Female | (%) | (%) |
| | | | Holiday | Business | Other | | | 2012* | 2012*/11 |
| GRAND TOTAL | 223,032 | 249,620 | 15,176 | 12,508 | 277,304 | 124,451 | 100.0 | 24.3 | |
| Southern Europe | 2,873 | 4,353 | 127 | 99 | 4,579 | 2,074 | 1.7 | 59.4 | |
| Croatia | 26 | 25 | 2 | 0 | 27 | 12 | 0.0 | 3.8 | |
| Greece | 96 | 100 | 2 | 1 | 103 | 37 | 0.0 | 7.3 | |
| Italy | 1,046 | 981 | 63 | 33 | 1,077 | 356 | 0.4 | 3.0 | |
| Portugal | 259 | 291 | 6 | 0 | 297 | 140 | 0.1 | 14.7 | |
| Serbia | 28 | 19 | 4 | 1 | 24 | 6 | 0.0 | -14.3 | |
| Slovenia | 95 | 71 | 1 | 0 | 72 | 32 | 0.0 | -24.2 | |
| Spain | 1,152 | 2,657 | 37 | 55 | 2,749 | 1,435 | 1.0 | 138.6 | |
| Turkey | 171 | 209 | 12 | 9 | 230 | 56 | 0.1 | 34.5 | |
| Other Europe | 1,806 | 496 | 194 | 97 | 787 | 316 | 0.3 | -56.4 | |
| Americas | 18,835 | 13,403 | 1,058 | 4,404 | 18,865 | 7,381 | 6.8 | 0.2 | |
| Argentina | 284 | 521 | 8 | 42 | 571 | 266 | 0.2 | 101.1 | |
| Brazil | 248 | 407 | 6 | 5 | 418 | 182 | 0.2 | 68.5 | |
| Canada | 3,585 | 2,704 | 156 | 525 | 3,385 | 1,376 | 1.2 | -5.6 | |
| Chile | 205 | 170 | 1 | 0 | 171 | 74 | 0.1 | -16.6 | |
| Colombia | 104 | 123 | 1 | 6 | 130 | 71 | 0.0 | 25.0 | |
| Costa Rica | 48 | 12 | 1 | 1 | 14 | 5 | 0.0 | -70.8 | |
| Ecuador | 12 | 5 | 0 | 1 | 6 | 3 | 0.0 | -50.0 | |
| Mexico | 353 | 317 | 8 | 4 | 329 | 170 | 0.1 | -6.8 | |
| Peru | 63 | 48 | 3 | 0 | 51 | 13 | 0.0 | -19.0 | |
| United States | 13,601 | 8,743 | 790 | 3,744 | 13,277 | 4,982 | 4.8 | -2.4 | |
| Uruguay | 23 | 28 | 0 | 9 | 37 | 21 | 0.0 | 60.9 | |
| Other Americas | 309 | 325 | 84 | 67 | 476 | 218 | 0.2 | 54.0 | |
| Africa | 536 | 303 | 56 | 14 | 373 | 131 | 0.1 | -30.4 | |
| Cameroon | 43 | 13 | 1 | 0 | 14 | 2 | 0.0 | -67.4 | |
| Congo | 7 | 0 | 0 | 1 | 1 | 0 | 0.0 | -85.7 | |
| Ghana | 40 | 8 | 1 | 0 | 9 | 0 | 0.0 | -77.5 | |
| Kenya | 32 | 9 | 1 | 4 | 14 | 3 | 0.0 | -56.3 | |
| Liberia | 42 | 8 | 0 | 0 | 8 | 1 | 0.0 | -81.0 | |
| Nigeria | 71 | 16 | 21 | 1 | 38 | 2 | 0.0 | -46.5 | |
| Sudan | 0 | 4 | 2 | 1 | 7 | 2 | 0.0 | | |
| South Africa | 247 | 227 | 22 | 2 | 251 | 107 | 0.1 | 1.6 | |
| Uganda | 32 | 3 | 0 | 2 | 5 | 2 | 0.0 | -84.4 | |
| Other Africa | 22 | 15 | 8 | 3 | 26 | 12 | 0.0 | 18.2 | |
| Middle East | 586 | 666 | 31 | 10 | 707 | 232 | 0.3 | 20.6 | |
| Egypt | 7 | 13 | 0 | 0 | 13 | 3 | 0.0 | 85.7 | |
| Iran | 81 | 50 | 0 | 2 | 52 | 15 | 0.0 | -35.8 | |
| Iraq | 5 | 5 | 1 | 0 | 6 | 1 | 0.0 | 20.0 | |
| Israel | 400 | 508 | 22 | 4 | 534 | 199 | 0.2 | 33.5 | |
| Kuwait | 30 | 23 | 0 | 0 | 23 | 1 | 0.0 | -23.3 | |
| Oman | 14 | 10 | 0 | 0 | 10 | 1 | 0.0 | -28.6 | |
| Palestine | 5 | 2 | 0 | 0 | 2 | 0 | 0.0 | -60.0 | |
| Qatar | 2 | 5 | 0 | 0 | 5 | 0 | 0.0 | 150.0 | |
| Saudi Arabia | 6 | 6 | 1 | 0 | 7 | 2 | 0.0 | 16.7 | |
| United Arab Emirates | 12 | 27 | 0 | 0 | 27 | 1 | 0.0 | 125.0 | |
| Yemen | 9 | 5 | 0 | 1 | 6 | 0 | 0.0 | -33.3 | |
| Other Middle East | 15 | 12 | 7 | 3 | 22 | 9 | 0.0 | 46.7 | |

Remark:

- Cambodian outbound tourist departures: 70,738
- International outbound tourist departures: 275,739

COMPILED BY:

1. Mr. Kong Sopheareak

Director
Statistics & Tourism Information Department
Fax: +855 23 885003
E-mail: kong@mot.gov.kh

2. Mr. Horth Vanny

Chief of Tourism Statistics Office
Compile and data analysis
Tel.: +855 12 827664