

**VOLUNTARY COUNTRY REPORT**

**BY**

**CAMBODIA**

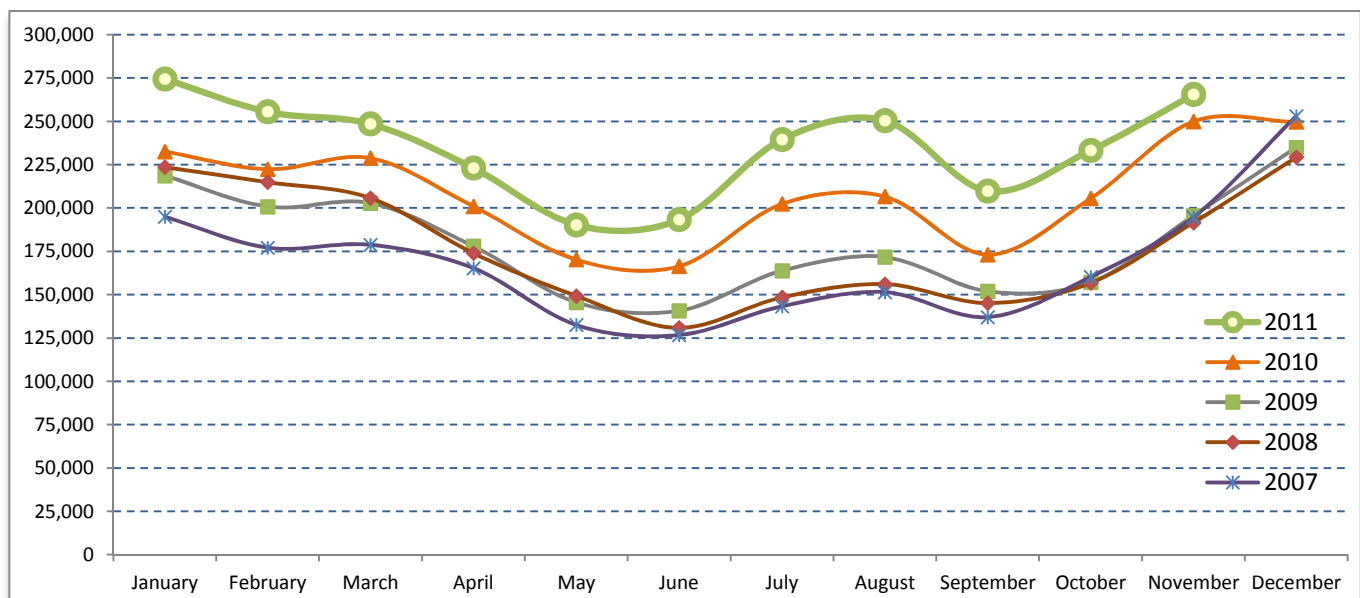
## Tourism Highlights

### International Tourist Arrivals, Average Length of Stay, Hotels Occupancy & Tourism Receipts 1993 - 2010

Years	Tourist Arrivals		Average Length	Hotels Occupancy	Tourism Receipts
	number	change (%)	of Stay (days)	(%)	(million US\$)
1993	118,183	-	N/A	N/A	N/A
1994	176,617	49.4%	N/A	N/A	N/A
1995	219,680	24.4%	8.00	37.00	100
1996	260,489	18.6%	7.50	40.00	118
1997	218,843	-16.0%	6.40	30.00	103
1998	286,524	30.9%	5.20	40.00	166
1999	367,743	28.3%	5.50	44.00	190
2000	466,365	26.8%	5.50	45.00	228
2001	604,919	29.7%	5.50	48.00	304
2002	786,524	30.0%	5.80	50.00	379
2003	701,014	-10.9%	5.50	50.00	347
2004	1,055,202	50.5%	6.30	52.00	578
2005	1,421,615	34.7%	6.30	52.00	832
2006	1,700,041	19.6%	6.50	54.79	1,049
2007	2,015,128	18.5%	6.50	54.79	1,400
2008	2,125,465	5.5%	6.65	62.68	1,595
2009	2,161,577	1.7%	6.45	63.57	1,561
2010	2,508,289	16.0%	6.45	65.74	1,786

### International tourist arrivals to Cambodia

Destination	Months	2007	2008	2009	2010	2011	change (%) 2011*/10
<b>Cambodia</b>	<b>Q1</b>	<b>550,813</b>	<b>644,205</b>	<b>622,288</b>	<b>683,692</b>	<b>778,467</b>	<b>13.9</b>
<i>International tourist arrivals</i>	January	194,932	223,581	218,691	232,590	274,471	18.0
<i>by all means of</i>	February	177,130	214,902	200,789	222,354	255,499	14.9
<i>transportations</i>	March	178,751	205,722	202,808	228,748	248,497	8.6
	<b>Q2</b>	<b>424,536</b>	<b>454,031</b>	<b>464,230</b>	<b>537,464</b>	<b>606,562</b>	<b>12.9</b>
	April	165,347	173,903	177,955	200,965	223,032	11.0
	May	132,512	149,275	145,564	170,164	190,258	11.8
	June	126,677	130,853	140,711	166,335	193,272	16.2
	<b>Q3</b>	<b>431,815</b>	<b>449,693</b>	<b>487,422</b>	<b>582,024</b>	<b>699,760</b>	<b>20.2</b>
	July	143,310	148,449	163,817	202,349	239,527	18.4
	August	151,478	156,098	171,668	206,563	250,429	21.2
	September	137,027	145,146	151,937	173,112	209,804	21.2
	<b>Q4</b>	<b>607,964</b>	<b>577,536</b>	<b>587,637</b>	<b>705,109</b>	<b>498,729</b>	
	October	160,235	156,718	157,105	205,515	233,190	13.5
	November	194,646	191,549	195,570	249,892	265,539	6.3
	December	253,083	229,269	234,962	249,702		
	<b>Total</b>	<b>2,015,128</b>	<b>2,125,465</b>	<b>2,161,577</b>	<b>2,508,289</b>	<b>2,583,518</b>	<b>14.4%</b>



Source: Statistics and ICT Department, MOT

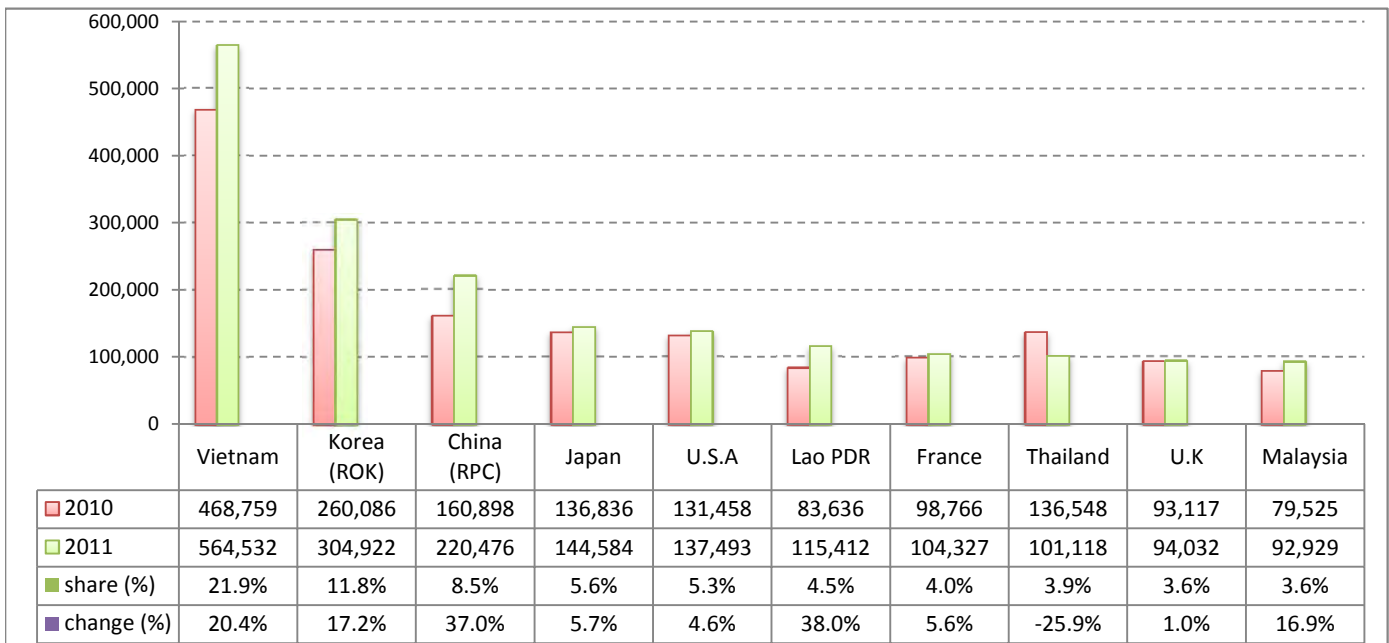
## Executive Summary Report in the First Eleven Months of 2011

I. International tourist arrivals to Cambodia in January - November was: **2,583,518**

### II. Mode of arrivals

	visitors	share (%)
<b>Air</b>	<b>1,317,897</b>	<b>51.0</b>
Phnom Penh Int'l Airport	582,459	22.5
Siem Reap Int'l Airport	735,438	28.5
<b>Land and Water ways</b>	<b>1,265,621</b>	<b>49.0</b>
Land	1,190,801	46.1
Water ways	74,820	2.9
<b>Total</b>	<b>2,583,518</b>	<b>100.0</b>

### III. Top ten markets arrivals in January - November 2011



### IV. International tourist arrivals to Cambodia in January - November 2011

	Inbound		share (%)		change (%)
	2010	2011	2010	2011	2011*/10
<b>Air</b>	<b>1,167,178</b>	<b>1,317,897</b>	<b>51.7</b>	<b>51.0</b>	<b>12.9</b>
Phnom Penh Int'l Airport	531,086	582,459	23.5	22.5	9.7
Siem Reap Int'l Airport	636,092	735,438	28.2	28.5	15.6
<b>Land and Water ways</b>	<b>1,091,409</b>	<b>1,265,621</b>	<b>48.3</b>	<b>49.0</b>	<b>16.0</b>
Land	1,020,322	1,190,801	45.2	46.1	16.7
Water ways	71,087	74,820	3.1	2.9	5.3
<b>Total</b>	<b>2,258,587</b>	<b>2,583,518</b>	<b>100.0</b>	<b>100.0</b>	<b>14.4</b>

### V. Remark: Percentage share of international tourist arrivals at destinations in January - November 2011

	Arrivals		share (%)		change (%)
	2010	2011	2010	2011	2011*/10
Phnom Penh & Other Destinations	1,085,705	1,145,308	48.1	44.3	5.5
Siem Reap Province	1,172,882	1,438,210	51.9	55.7	22.6
<b>Total</b>	<b>2,258,587</b>	<b>2,583,518</b>	<b>100.0</b>	<b>100.0</b>	<b>14.4</b>

### VI. Outbound tourists departures in January - November 2011

	Outbound		change (%)
	2010	2011	2011*/10
Cambodian outbound tourists	461,208	639,484	38.7
International outbound tourists	2,124,557	2,558,319	20.4

## International Tourist Arrivals to Cambodia by Country of Residence in January - November 2011

(by all mean of transportations)

Regions Country of Residence	2010		2011			share		change	
			Purpose of Visit			Total	Female	(%)	(%)
			Tourists	Business	Other			2011*	2011*/10
<b>GRAND TOTAL</b>	<b>2,258,587</b>	<b>2,421,767</b>	<b>132,588</b>	<b>29,163</b>	<b>2,583,518</b>	<b>1,160,944</b>	<b>100.0</b>	<b>14.4</b>	
<b>Asia and the Pacific</b>	<b>1,638,113</b>	<b>1,772,821</b>	<b>105,634</b>	<b>15,119</b>	<b>1,893,574</b>	<b>870,034</b>	<b>73.3</b>	<b>15.6</b>	
<b>ASEAN</b>	<b>873,891</b>	<b>959,182</b>	<b>30,863</b>	<b>6,925</b>	<b>996,970</b>	<b>452,439</b>	<b>38.6</b>	<b>14.1</b>	
Brunei Darussalam	432	322	16	100	438	186	0.0	1.4	
Indonesia	11,375	10,859	2,693	488	14,040	5,344	0.5	23.4	
Lao PDR	83,636	114,707	133	572	115,412	78,481	4.5	38.0	
Malaysia	79,525	86,915	5,753	261	92,929	32,854	3.6	16.9	
Myanmar	2,372	3,178	420	125	3,723	1,551	0.1	57.0	
Philippines	51,278	57,244	4,925	1,000	63,169	38,034	2.4	23.2	
Singapore	39,966	39,543	1,869	197	41,609	15,622	1.6	4.1	
Thailand	136,548	90,874	8,678	1,566	101,118	34,552	3.9	-25.9	
Vietnam	468,759	555,540	6,376	2,616	564,532	245,815	21.9	20.4	
<b>Eastern Asia</b>	<b>646,539</b>	<b>693,896</b>	<b>66,153</b>	<b>5,232</b>	<b>765,281</b>	<b>364,516</b>	<b>29.6</b>	<b>18.4</b>	
China (RPC)	160,898	179,905	39,118	1,453	220,476	100,215	8.5	37.0	
Hong Kong SAR	3,952	4,559	249	9	4,817	2,243	0.2	21.9	
Japan	136,836	137,240	5,408	1,936	144,584	68,387	5.6	5.7	
Korea (ROK)	260,086	290,636	12,509	1,777	304,922	152,172	11.8	17.2	
Mongolia	272	188	12	26	226	117	0.0	-16.9	
Taiwan, China	84,495	81,368	8,857	31	90,256	41,382	3.5	6.8	
<b>Southern Asia</b>	<b>16,907</b>	<b>13,843</b>	<b>3,014</b>	<b>874</b>	<b>17,731</b>	<b>4,526</b>	<b>0.7</b>	<b>4.9</b>	
Afghanistan	173	75	8	28	111	18	0.0	-35.8	
Bangladesh	1,540	843	202	119	1,164	129	0.0	-24.4	
Bhutan		47	7	25	79	26	0.0		
India	12,280	10,914	2,008	422	13,344	3,721	0.5	8.7	
Nepal	964	721	203	102	1,026	222	0.0	6.4	
Pakistan	994	562	368	95	1,025	192	0.0	3.1	
Sri Lanka	956	681	218	83	982	218	0.0	2.7	
<b>Western Asia</b>	<b>0</b>	<b>1,608</b>	<b>123</b>	<b>15</b>	<b>1,746</b>	<b>973</b>	<b>0.1</b>		
Kazakhstan		969	99	11	1,079	502	0.0		
Uzbekistan		639	24	4	667	471	0.0		
<b>Oceania</b>	<b>97,151</b>	<b>99,202</b>	<b>5,344</b>	<b>1,876</b>	<b>106,422</b>	<b>46,214</b>	<b>4.1</b>	<b>9.5</b>	
Australia	84,766	86,057	4,546	1,671	92,274	40,596	3.6	8.9	
Fiji		68	23	12	103	31	0.0		
New Zealand	12,385	13,077	775	193	14,045	5,587	0.5	13.4	
Other Asia & the Pacific	3,625	5,090	137	197	5,424	1,366	0.2	49.6	
<b>Europe</b>	<b>430,073</b>	<b>456,942</b>	<b>17,106</b>	<b>8,051</b>	<b>482,099</b>	<b>203,327</b>	<b>18.7</b>	<b>12.1</b>	
<b>Northern Europe</b>	<b>131,576</b>	<b>128,770</b>	<b>5,654</b>	<b>1,991</b>	<b>136,415</b>	<b>52,843</b>	<b>5.3</b>	<b>3.7</b>	
Denmark	7,104	8,119	315	114	8,548	3,530	0.3	20.3	
Finland	4,675	5,242	218	168	5,628	2,144	0.2	20.4	
Iceland	214	304	9	3	316	115	0.0	47.7	
Ireland	7,759	7,407	249	110	7,766	3,139	0.3	0.1	
Norway	7,018	6,985	281	105	7,371	3,010	0.3	5.0	
Sweden	11,689	12,112	453	189	12,754	4,953	0.5	9.1	
United Kingdom	93,117	88,601	4,129	1,302	94,032	35,952	3.6	1.0	
<b>Western Europe</b>	<b>207,998</b>	<b>200,732</b>	<b>9,137</b>	<b>4,826</b>	<b>214,695</b>	<b>87,570</b>	<b>8.3</b>	<b>3.2</b>	
Austria	7,370	6,415	151	86	6,652	2,648	0.3	-9.7	
Belgium	12,583	11,691	445	297	12,433	4,973	0.5	-1.2	
France	98,766	95,670	5,853	2,804	104,327	44,001	4.0	5.6	
Germany	54,263	53,833	1,519	1,063	56,415	22,184	2.2	4.0	
Luxembourg	559	415	9	18	442	181	0.0	-20.9	
Monaco		77	0	3	80	38	0.0		
Netherlands	21,002	19,016	632	350	19,998	7,792	0.8	-4.8	
Switzerland	13,455	13,615	528	205	14,348	5,753	0.6	6.6	
<b>Eastern Europe</b>	<b>46,026</b>	<b>77,443</b>	<b>1,054</b>	<b>337</b>	<b>78,834</b>	<b>41,627</b>	<b>3.1</b>	<b>71.3</b>	
Bulgaria	405	373	9	15	397	198	0.0	-2.0	
Czech Republic	2,625	2,884	37	16	2,937	1,265	0.1	11.9	
Estonia		778	20	15	813	329	0.0		
Hungary	2,471	2,266	56	15	2,337	1,080	0.1	-5.4	
Lithuania		1,103	10	1	1,114	595	0.0		
Poland	7,185	8,087	53	59	8,199	4,144	0.3	14.1	
Romania	1,064	905	18	7	930	504	0.0	-12.6	
Russian Federation	28,802	56,695	714	158	57,567	31,212	2.2	99.9	
Slovakia	1,102	1,076	27	32	1,135	473	0.0	3.0	
Ukraine	2,372	3,276	110	19	3,405	1,827	0.1	43.5	

## International Tourist Arrivals to Cambodia by Country of Residence in January - November 2011

(by all mean of transportations)

Regions Country of Residence	2010		2011			share		change	
			Purpose of Visit			Total	Female	(%)	(%)
			Tourists	Business	Other			2011*	2011*/10
<b>GRAND TOTAL</b>	<b>2,258,587</b>	<b>2,421,767</b>	<b>132,588</b>	<b>29,163</b>	<b>2,583,518</b>	<b>1,160,944</b>	<b>100.0</b>	<b>14.4</b>	
<b>Southern Europe</b>	<b>41,426</b>	<b>45,480</b>	<b>1,164</b>	<b>744</b>	<b>47,388</b>	<b>20,225</b>	<b>1.8</b>	<b>14.4</b>	
Croatia	396	414	25	10	449	176	0.0	13.4	
Greece	1,268	988	32	13	1,033	389	0.0	-18.5	
Italy	17,230	17,672	507	257	18,436	7,118	0.7	7.0	
Portugal	2,241	2,741	51	34	2,826	1,361	0.1	26.1	
Serbia		335	12	17	364	151	0.0		
Slovenia	606	683	19	10	712	306	0.0	17.5	
Spain	17,391	19,974	323	263	20,560	9,742	0.8	18.2	
Turkey	2,294	2,673	195	140	3,008	982	0.1	31.1	
Other Europe	3,047	4,517	97	153	4,767	1,062	0.2	56.4	
<b>Americas</b>	<b>179,044</b>	<b>179,774</b>	<b>9,156</b>	<b>5,628</b>	<b>194,558</b>	<b>83,127</b>	<b>7.5</b>	<b>8.7</b>	
Argentina	2,014	4,851	33	40	4,924	2,511	0.2	144.5	
Brazil	2,207	3,153	33	50	3,236	1,575	0.1	46.6	
Canada	34,543	35,840	1,698	520	38,058	16,767	1.5	10.2	
Chile	2,059	2,108	53	24	2,185	1,027	0.1	6.1	
Colombia	960	1,895	40	23	1,958	963	0.1	104.0	
Costa Rica		167	12	7	186	108	0.0		
Ecuador		145	12	6	163	83	0.0		
Mexico	2,864	3,040	53	26	3,119	1,521	0.1	8.9	
Peru	410	422	10	17	449	208	0.0	9.5	
United States	131,458	125,570	7,136	4,787	137,493	57,244	5.3	4.6	
Uruguay	316	495	3	8	506	281	0.0	60.1	
Other Americas	2,213	2,088	73	120	2,281	839	0.1	3.1	
<b>Africa</b>	<b>4,223</b>	<b>4,586</b>	<b>465</b>	<b>222</b>	<b>5,273</b>	<b>1,836</b>	<b>0.2</b>	<b>24.9</b>	
Cameroon	457	353	7	10	370	71	0.0	-19.0	
Congo		148	1	6	155	35	0.0		
Ghana	467	356	20	20	396	53	0.0	-15.2	
Kenya		195	10	46	251	117	0.0		
Liberia		325	3	0	328	65	0.0		
Nigeria	714	223	226	23	472	62	0.0	-33.9	
Sudan	35	31	2	12	45	15	0.0	28.6	
South Africa	2,209	2,455	179	36	2,670	1,097	0.1	20.9	
Uganda		269	3	17	289	203	0.0		
Other Africa	341	231	14	52	297	118	0.0	-12.9	
<b>Middle East</b>	<b>7,134</b>	<b>7,644</b>	<b>227</b>	<b>143</b>	<b>8,014</b>	<b>2,620</b>	<b>0.3</b>	<b>12.3</b>	
Egypt	197	137	11	22	170	33	0.0	-13.7	
Iran	480	622	12	4	638	102	0.0	32.9	
Iraq		66	3	18	87	19	0.0		
Israel	5,678	5,710	182	40	5,932	2,300	0.2	4.5	
Kuwait	493	498	0	1	499	12	0.0	1.2	
Oman		96	0	5	101	10	0.0		
Palestine		27	3	0	30	3	0.0		
Qatar		60	1	0	61	23	0.0		
Saudi Arabia	61	57	4	6	67	20	0.0	9.8	
United Arab Emirates		144	0	5	149	17	0.0		
Yemen		70	6	7	83	13	0.0		
Other Middle East	225	157	5	35	197	68	0.0	-12.4	

### Remark:

- Cambodian Overseas:	71,084
- Cambodian Residence:	592,975
- Cambodian outbound tourist departures:	639,484
- International outbound tourist departures:	2,558,319

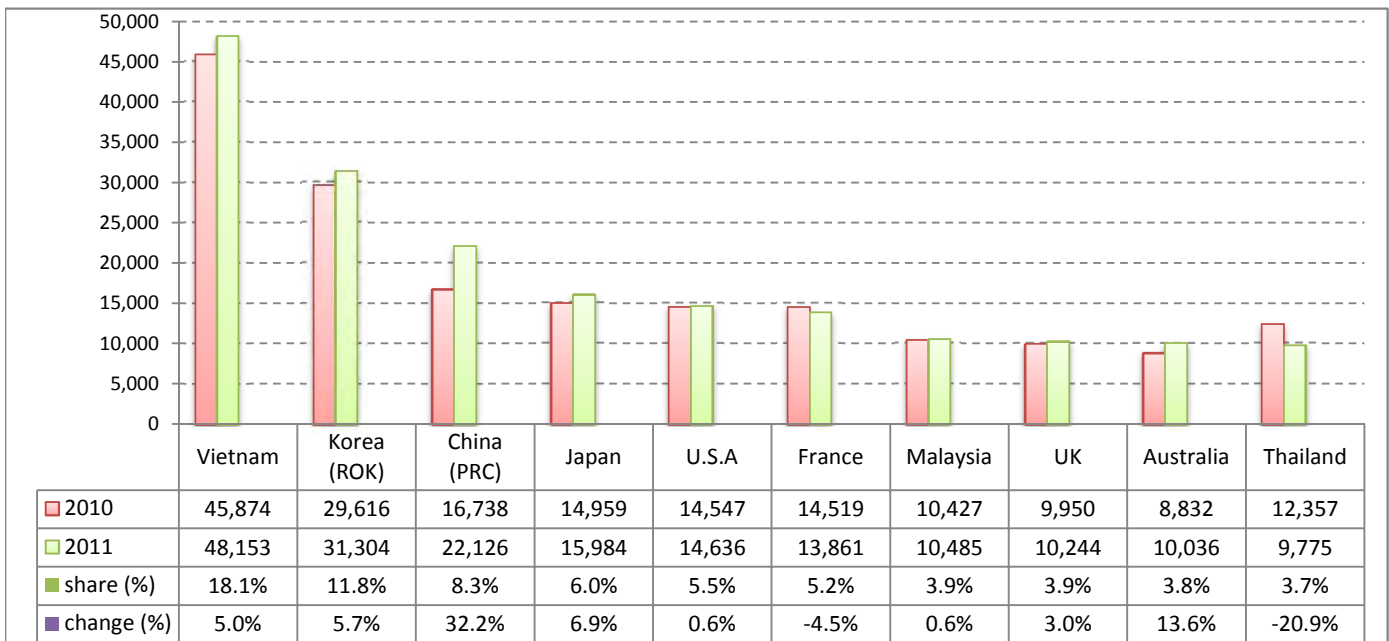
## Executive Summary Report in November 2011

I. International tourist arrivals to Cambodia in November was: **265,539**

### II. Mode of arrivals

	visitors	share (%)
<b>Air</b>	<b>149,415</b>	<b>56.3</b>
Phnom Penh Int'l Airport	61,005	23.0
Siem Reap Int'l Airport	88,410	33.3
<b>Land and Water ways</b>	<b>116,124</b>	<b>43.7</b>
Land	107,173	40.4
Water ways	8,951	3.4
<b>Total</b>	<b>265,539</b>	<b>100.0</b>

### III. Top ten markets arrivals in November 2011



### IV. International tourist arrivals to Cambodia in November 2011

	Inbound		share (%)		change (%)
	2010	2011	2010	2011	2011*/10
<b>Air</b>	<b>138,750</b>	<b>149,415</b>	<b>55.5</b>	<b>56.3</b>	<b>7.7</b>
Phnom Penh Int'l Airport	59,803	61,005	23.9	23.0	2.0
Siem Reap Int'l Airport	78,947	88,410	31.6	33.3	12.0
<b>Land and Water ways</b>	<b>111,142</b>	<b>116,124</b>	<b>44.5</b>	<b>43.7</b>	<b>4.5</b>
Land	103,049	107,173	41.2	40.4	4.0
Water ways	8,093	8,951	3.2	3.4	10.6
<b>Total</b>	<b>249,892</b>	<b>265,539</b>	<b>100.0</b>	<b>100.0</b>	<b>6.3</b>

### V. Remark: Percentage share of international tourist arrivals at destinations in November 2011

	Arrivals		share (%)		change (%)
	2010	2011	2010	2011	2011*/10
Phnom Penh & Other Destinations	113,424	116,883	45.4	44.0	3.0
Siem Reap Province	136,468	148,656	54.6	56.0	8.9
<b>Total</b>	<b>249,892</b>	<b>265,539</b>	<b>100.0</b>	<b>100.0</b>	<b>6.3</b>

### VI. Outbound tourists departures in November 2011

	Outbound		change (%)
	2010	2011	2011*/10
Cambodian outbound tourists	43,981	66,045	50.2
International outbound tourists	230,741	254,434	10.3